


STATE OF UTAH
DEPARTMENT OF NATURAL RESOURCES
DIVISION OF OIL, GAS AND MINING

FORM 3

AMENDED REPORT

APPLICATION FOR PERMIT TO DRILL						1. WELL NAME and NUMBER NBU 1022-34F	
2. TYPE OF WORK DRILL NEW WELL <input checked="" type="checkbox"/> REENTER P&A WELL <input type="checkbox"/> DEEPEN WELL <input type="checkbox"/>						3. FIELD OR WILDCAT NATURAL BUTTES	
4. TYPE OF WELL Gas Well Coalbed Methane Well: NO						5. UNIT or COMMUNITIZATION AGREEMENT NAME NATURAL BUTTES	
6. NAME OF OPERATOR KERR-MCGEE OIL & GAS ONSHORE, L.P.						7. OPERATOR PHONE 720 929-6587	
8. ADDRESS OF OPERATOR P.O. Box 173779, Denver, CO, 80217						9. OPERATOR E-MAIL mary.mondragon@anadarko.com	
10. MINERAL LEASE NUMBER (FEDERAL, INDIAN, OR STATE) UTU-037166			11. MINERAL OWNERSHIP FEDERAL <input checked="" type="checkbox"/> INDIAN <input type="checkbox"/> STATE <input type="checkbox"/> FEE <input type="checkbox"/>			12. SURFACE OWNERSHIP FEDERAL <input checked="" type="checkbox"/> INDIAN <input type="checkbox"/> STATE <input type="checkbox"/> FEE <input type="checkbox"/>	
13. NAME OF SURFACE OWNER (if box 12 = 'fee')						14. SURFACE OWNER PHONE (if box 12 = 'fee')	
15. ADDRESS OF SURFACE OWNER (if box 12 = 'fee')						16. SURFACE OWNER E-MAIL (if box 12 = 'fee')	
17. INDIAN ALLOTTEE OR TRIBE NAME (if box 12 = 'INDIAN')			18. INTEND TO COMMINGLE PRODUCTION FROM MULTIPLE FORMATIONS YES <input type="checkbox"/> (Submit Commingling Application) NO <input checked="" type="checkbox"/>			19. SLANT VERTICAL <input checked="" type="checkbox"/> DIRECTIONAL <input type="checkbox"/> HORIZONTAL <input type="checkbox"/>	
20. LOCATION OF WELL	FOOTAGES	QTR-QTR	SECTION	TOWNSHIP	RANGE	MERIDIAN	
LOCATION AT SURFACE	1632 FNL 2266 FWL	SE	34	10.0 S	22.0 E	S	
Top of Uppermost Producing Zone	1632 FNL 2266 FWL	SE	34	10.0 S	22.0 E	S	
At Total Depth	1632 FNL 2266 FWL	SE	34	10.0 S	22.0 E	S	
21. COUNTY UINTAH			22. DISTANCE TO NEAREST LEASE LINE (Feet) 1632			23. NUMBER OF ACRES IN DRILLING UNIT 560	
			25. DISTANCE TO NEAREST WELL IN SAME POOL (Applied For Drilling or Completed) 500			26. PROPOSED DEPTH MD: 7700 TVD:	
27. ELEVATION - GROUND LEVEL 5011			28. BOND NUMBER WYB000291			29. SOURCE OF DRILLING WATER / WATER RIGHTS APPROVAL NUMBER IF APPLICABLE Water permit # 43-8496	
ATTACHMENTS							
VERIFY THE FOLLOWING ARE ATTACHED IN ACCORDANCE WITH THE UTAH OIL AND GAS CONSERVATION GENERAL RULES							
<input checked="" type="checkbox"/> WELL PLAT OR MAP PREPARED BY LICENSED SURVEYOR OR ENGINEER				<input checked="" type="checkbox"/> COMPLETE DRILLING PLAN			
<input type="checkbox"/> AFFIDAVIT OF STATUS OF SURFACE OWNER AGREEMENT (IF FEE SURFACE)				<input type="checkbox"/> FORM 5. IF OPERATOR IS OTHER THAN THE LEASE OWNER			
<input type="checkbox"/> DIRECTIONAL SURVEY PLAN (IF DIRECTIONALLY OR HORIZONTALLY DRILLED)				<input checked="" type="checkbox"/> TOPOGRAPHICAL MAP			
NAME Kevin McIntyre			TITLE Regulatory Analyst I			PHONE 720 929-6226	
SIGNATURE			DATE 09/03/2008			EMAIL Kevin.McIntyre@anadarko.com	
API NUMBER ASSIGNED 43047500930000			APPROVAL  Permit Manager				

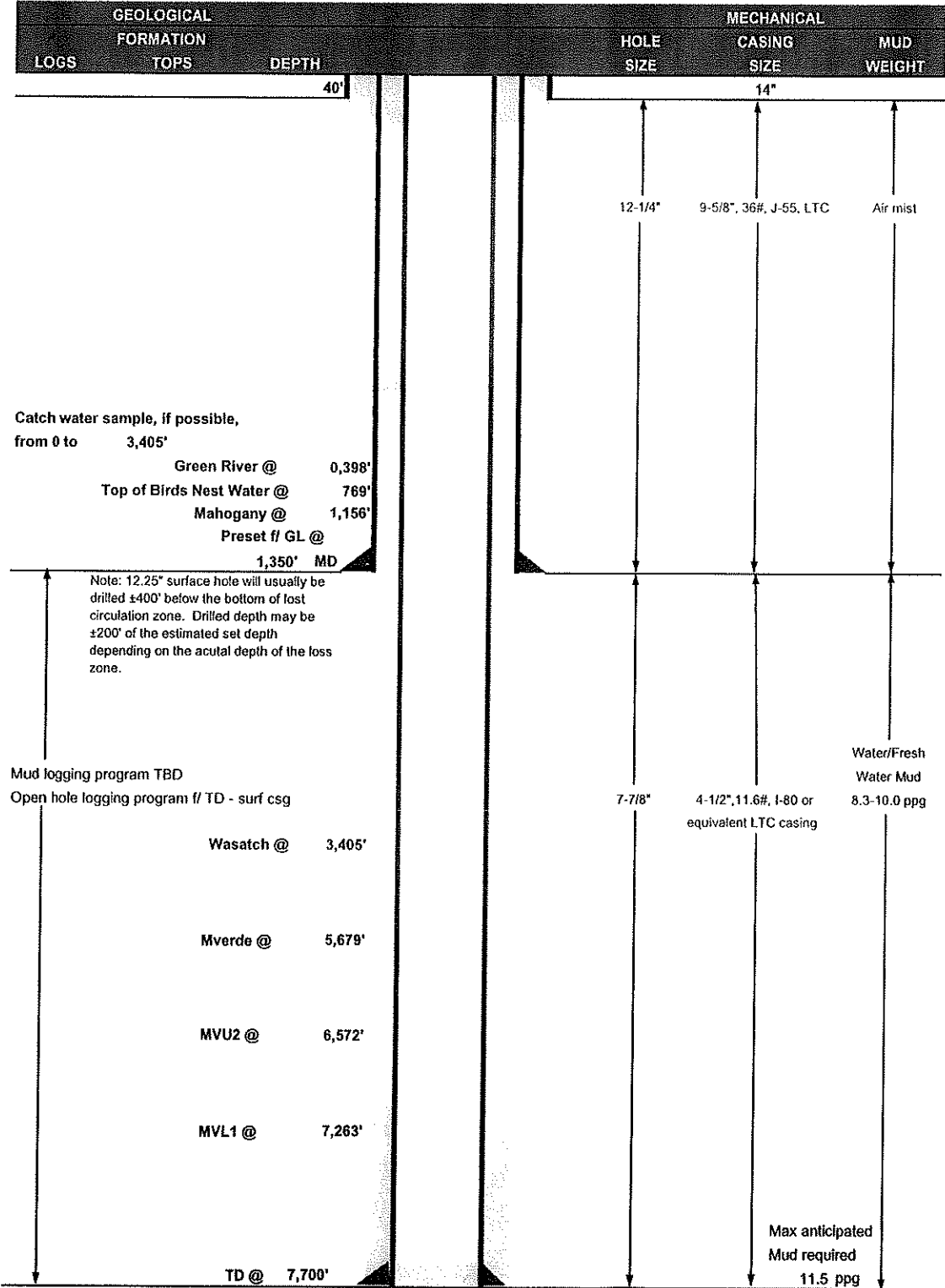
Proposed Hole, Casing, and Cement						
String	Hole Size	Casing Size	Top (MD)	Bottom (MD)		
Surf	12.25	9.625	0	1350		
Pipe	Grade	Length	Weight			
	Grade J-55 LT&C	1350	36.0			
	Cement Interval	Top (MD)	Bottom (MD)			
		0	1350			
		Cement Description	Class	Sacks	Yield	Weight
			Premium Foamed Cement	215	1.18	15.6

Proposed Hole, Casing, and Cement						
String	Hole Size	Casing Size	Top (MD)	Bottom (MD)		
Prod	7.875	4.5	0	7700		
Pipe	Grade	Length	Weight			
	Grade I-80 LT&C	7700	11.6			
	Cement Interval	Top (MD)	Bottom (MD)			
		0	7700			
		Cement Description	Class	Sacks	Yield	Weight
			Premium Lite High Strength	320	3.38	11.0
			Pozzuolanic Cement	1340	1.31	14.3



KERR-McGEE OIL & GAS ONSHORE LP DRILLING PROGRAM

COMPANY NAME	KERR-McGEE OIL & GAS ONSHORE LP		DATE	August 23, 2008		
WELL NAME	NBU 1022-34F		TD	7,700' MD/TVD		
FIELD	Natural Buttes	COUNTY	Uintah	STATE	Utah	
				ELEVATION	5,011' GL KB 5,026'	
SURFACE LOCATION	SEW 1632' FNL. & 2266' FWL, SEC.34, T10S, R22E				BHL	Straight Hole
	Latitude:	39.908233	Longitude:	-109.426539	NAD 27	
OBJECTIVE ZONE(S)	Wasatch/Mesaverde					
ADDITIONAL INFO	Regulatory Agencies: BLM (MINERALS and SURFACE), UDOGM, Tri-County Health Dept.					





KERR-McGEE OIL & GAS ONSHORE LP
DRILLING PROGRAM

CASING PROGRAM

	SIZE	INTERVAL	WT.	GR.	CPLG.	DESIGN FACTORS		
						BURST	COLLAPSE	TENSION
CONDUCTOR	14"	0-40'				3520	2020	453000
SURFACE	9-5/8"	0 to 1350	36.00	J-55	LTC	1.21	3.20	11.86
PRODUCTION	4-1/2"	0 to 7700	11.60	I-80	LTC	2.67	1.38	2.58

- 1) Max Anticipated Surf. Press.(MASP) (Surface Casing) = (Pore Pressure at next csg point-(0.22 psi/ft-partial evac gradient x TVD of next csg point)
 - 2) MASP (Prod Casing) = Pore Pressure at TD - (.22 psi/ft-partial evac gradient x TD)
- (Burst Assumptions: TD = 11.5 ppg) .22 psi/ft = gradient for partially evac wellbore
(Collapse Assumption: Fully Evacuated Casing, Max MW) (Tension Assumptions: Air Weight of Casing*Buoy.Fact. of water)
MASP 3080 psi

CEMENT PROGRAM

		FT. OF FILL	DESCRIPTION	SACKS	EXCESS	WEIGHT	YIELD
SURFACE	LEAD	500	Premium cmt + 2% CaCl + .25 pps flocele	215	60%	15.60	1.18
Option 1	TOP OUT CMT (1)	200	20 gals sodium silicate + Premium cmt + 2% CaCl + .25 pps flocele	50		15.60	1.18
	TOP OUT CMT (2)	as required	Premium cmt + 2% CaCl	as req.		15.60	1.18
SURFACE	Option 2		NOTE: If well will circulate water to surface, option 2 will be utilized				
	LEAD	1500	Prem cmt + 16% Gel + 10 pps gilsonite +.25 pps Flocele + 3% salt BWOC	170	35%	11.00	3.82
	TAIL	500	Premium cmt + 2% CaCl + .25 pps flocele	180	35%	15.60	1.18
	TOP OUT CMT	as required	Premium cmt + 2% CaCl	as req.		15.60	1.18
PRODUCTION	LEAD	2,900'	Premium Lite II + 3% KCl + 0.25 pps celloflake + 5 pps gilsonite + 10% gel + 0.5% extender	320	60%	11.00	3.38
	TAIL	4,800'	50/50 Poz/G + 10% salt + 2% gel +.1% R-3	1340	60%	14.30	1.31

*Substitute caliper hole volume plus 0% excess for LEAD if accurate caliper is obtained
*Substitute caliper hole volume plus 10% excess for TAIL if accurate caliper is obtained

FLOAT EQUIPMENT & CENTRALIZERS

SURFACE	Guide shoe, 1 jt, insert float. Centralize first 3 joints with bow spring centralizers. Thread lock guide shoe.
PRODUCTION	Float shoe, 1 jt, float collar. Centralize first 3 joints & every third joint to top of tail cement with bow spring centralizers.

ADDITIONAL INFORMATION

Test casing head to 750 psi after installing. Test surface casing to 1,500 psi prior to drilling out.

BOPE: 11" 5M with one annular and 2 rams. Test to 5,000 psi (annular to 2,500 psi) prior to drilling out. Record on chart recorder & tour sheet. Function test rams on each trip. Maintain safety valve & inside BOP on rig floor at all times. Kelly to be equipped with upper & lower kelly valves.

Drop Totco surveys every 2000'. Maximum allowable hole angle is 5 degrees.

Most rigs have PVT Systems for mud monitoring. If no PVT is available, visual monitoring will be utilized.

DRILLING ENGINEER: _____
Brad Laney

DATE: _____

DRILLING SUPERINTENDENT: _____
Randy Bayne NBU 1022-34F.xls

DATE: _____

**NBU 1022-34F
SENW Sec. 34, T10S,R22E
UINTAH COUNTY, UTAH
UTU-037166**

ONSHORE ORDER NO. 1

DRILLING PROGRAM

1. Estimated Tops of Important Geologic Markers:

<u>Formation</u>	<u>Depth</u>
Uinta	0- Surface
Green River	398'
Bird's Nest	769'
Mahogany	1156'
Wasatch	3405'
Mesaverde	5679'
MVU2	6572'
MVL1	7263'
TD	7700'

2. Estimated Depths of Anticipated Water, Oil, Gas, or Mineral Formations:

<u>Substance</u>	<u>Formation</u>	<u>Depth</u>
	Green River	398'
	Bird's Nest	769'
	Mahogany	1156'
Gas	Wasatch	3405'
Gas	Mesaverde	5679'
Gas	MVU2	6572'
Gas	MVL1	7263'
Water	N/A	
Other Minerals	N/A	

3. Pressure Control Equipment (Schematic Attached)

Please see the Natural Buttes Unit Standard Operating Procedure (SOP).

4. Proposed Casing & Cementing Program:

Please see the Natural Buttes Unit SOP.

5. Drilling Fluids Program:

Please see the Natural Buttes Unit SOP.

6. Evaluation Program:

Please see the Natural Buttes Unit SOP.

7. **Abnormal Conditions:**

Maximum anticipated bottomhole pressure calculated at 7700' TD, approximately equals 4774 psi (calculated at 0.62 psi/foot).

Maximum anticipated surface pressure equals approximately 3080 psi (bottomhole pressure minus the pressure of a partially evacuated hole calculated at 0.22 psi/foot).

8. **Anticipated Starting Dates:**

Drilling is planned to commence immediately upon approval of this application.

9. **Variances:**

*Please see Natural Buttes Unit SOP Onshore Order #2 – Air Drilling Variance
Kerr-McGee Oil & Gas Onshore LP (KMG) respectfully requests a variance to several requirements associated with air drilling outlined in Onshore Order 2*

- *Blowout Prevention Equipment (BOPE) requirements;*
- *Mud program requirements; and*
- *Special drilling operation (surface equipment placement) requirements associated with air drilling.*

This Standard Operating Practices addendum provides supporting information as to why KMG current air drilling practices for constructing the surface casing hole should be granted a variance to Onshore Order 2 air drilling requirements.

The reader should note that the air rig is used only to construct a stable surface casing hole through a historically difficult lost circulation zone. A conventional rotary rig follows the air rig, and is used to drill and construct the majority of the wellbore.

More notable, KMG has used the air rig layout and procedures outlined below to drill the surface casing hole in approximately 675 wells without incident of blow out or loss of life.

Background

In a typical well, KMG utilizes an air rig for drilling the surface casing hole, an interval from the surface to surface casing depths, which varies in depth from 1,700 to 2,800 feet. The air rig drilling operation does not drill through productive or over pressured formations in KMG field, but does penetrate the Uinta and Green River Formations. The purpose of the air drilling operation is to overcome the severe loss circulation zone in the Green River known as the Bird's Nest while creating a stable hole for the surface casing. The surface casing hole is generally drilled to approximately 500 feet below the Bird's Nest.

Before the surface air rig is mobilized, a rathole rig is utilized to set and cement conductor pipe through a competent surface formation. Generally, the conductor is set at 40 feet. In some cases, conductor may be set deeper in areas that the surface formation is not found competent. This rig also drills the rat and mouse holes in preparation for the surface casing and production string drilling operations.

The air rig is then mobilized to drill the surface casing hole by drilling a 12-1/4 inch hole to just above the Bird's Nest interval with an air hammer. The hammer is then tripped

and replaced with a 12-1/4 inch tri-cone bit. The tri-cone bit is used to drill to the surface casing point, approximately 500 feet below the loss circulation zone (Bird's Nest). The 9-5/8 inch surface casing is then run and cemented in place, thereby isolating the lost circulation zone.

KMG fully appreciates Onshore Order 2 well control and safety requirements associated with a typical air drilling operations. However, the requirements of Onshore Order 2 are excessive with respect to the air rig layout and drilling operation procedures that are currently in practice to drill and control the surface casing hole in KMG Fields.

Variance for BOPE Requirements

The air rig operation utilizes a properly lubricated and maintained air bowl diverter system which diverts the drilling returns to a six-inch blooie line. The air bowl is the only piece of BOPE equipment which is installed during drilling operations and is sufficient to contain the air returns associated with this drilling operation. As was discussed earlier, the drilling of the surface hole does not encounter any over pressured or productive zones, and as a result standard BOPE equipment should not be required. In addition, standard drilling practices do not support the use of BOPE on 40 feet of conductor pipe.

Variance for Mud Material Requirements

Onshore Order 2 also states that sufficient quantities of mud materials shall be maintained or readily accessible for the purpose of assuring adequate well control. Once again, the surface hole drilling operations does not encounter over pressured or productive intervals, and as a result there is not a need to control pressure in the surface hole with a mud system. Instead of mud, the air rigs utilize water from the reserve pit for well control, if necessary. A skid pump which is located near the reserve pit (see attachment) will supply the water to the well bore.

Variance for Special Drilling Operation (surface equipment placement) Requirements

Onshore Order 2 requires specific safety distances or setbacks for the placement of associated standard air drilling equipment, wellbore, and reserve pits. The air rigs used to drill the surface holes are not typical of an air rig used to drill a producing hole in other parts of the US. These are smaller in nature and designed to fit a KMG location. The typical air rig layout for drilling surface hole in the field is attached.

Typically the blooie line discharge point is required to be 100 feet from the well bore. In the case of a KMG well, the reserve pit is only 45 feet from the rig and is used for the drill cuttings. The blooie line, which transports the drill cuttings from the well to the reserve pit, subsequently discharges only 45 feet from the well bore.

Typically the air rig compressors are required to be located in the opposite direction from the blooie line and a minimum of 100 feet from the well bore. At the KMG locations, the air rig compressors are approximately 40 feet from the well bore and approximately 60 feet from the blooie line discharge due to the unique air rig design. The air compressors (see attachment) are located on the rig (1250 cfm) and on a standby trailer (1170 cfm). A booster sits between the two compressors and boosts the output from 350 psi to 2000 psi. The design does put the booster and standby compressor opposite from the blooie line.

Lastly, Onshore Order 2 addresses the need for an automatic igniter or continuous pilot light on the blooie line. The air rig does not utilize an igniter as the surface hole drilling

operation does not encounter productive formations.

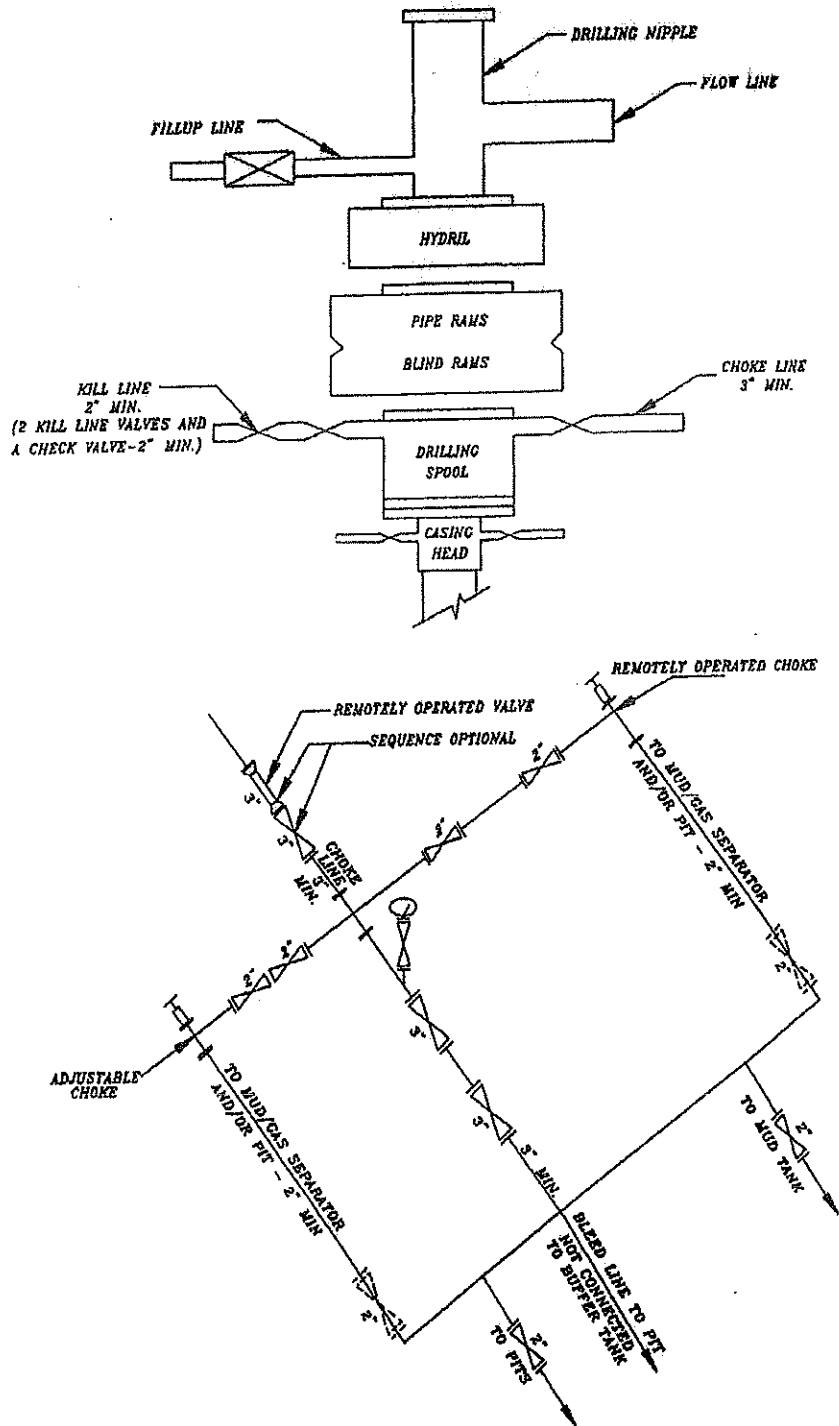
Conclusion

The air rig operating procedures and the attached air rig layout have effectively maintained well control while drilling the surface holes in KMG Fields. KMG respectfully requests a variance from Onshore Order 2 with respect to air drilling well control requirements as discussed above..

10. Other Information:

Please see Natural Buttes Unit SOP.

EXHIBIT A



SCHEMATIC DIAGRAM OF 5,000 PSI BOP STACK

**NBU 1022-34F
SENW Sec. 34,T10S,R22E
UINTAH COUNTY, UTAH
UTU-037166**

ONSHORE ORDER NO. 1

MULTI-POINT SURFACE USE & OPERATIONS PLAN

1. Existing Roads:

Refer to the attached location directions.

Refer to Topo Maps A and B for location of access roads within a 2-mile radius.

2. Planned Access Roads:

Approximately 160' +/- of new access road is proposed. Refer to Topo Map B.

Existence of pipelines; maximum grade; turnouts; major cut and fills, culverts, or bridges; gates, cattle guards, fence cuts, or modifications to existing facilities were determined at the on-site.

The access road was centerline flagged during time of staking.

Please see the Natural Buttes Unit Standard Operating Procedure (SOP).

3. Location of Existing Wells Within a 1-Mile Radius:

Please refer to Topo Map C.

4. Location of Existing & Proposed Facilities:

Please see the Natural Buttes Unit SOP.

Refer to Topo Map D for the location of the proposed pipelines.

A 1255' rights-of-way will be required. Approximately 1255' of 4" steel pipeline is proposed from the location to the tie-in point in Section 34, T10S, R22E. Please refer to the Topo Map D. The pipeline will be constructed utilizing existing rights where possible and pulled into place using a rubber tired tractor. The pipeline will be butt-welded together.

Variations to Best Management Practices (BMPs) Requested:

Approximately 1255' of 4" steel pipeline will be installed on surface within the access corridor for the well location. As a Best Management Practice (BMP), the pipeline would be buried within the access road corridor if possible. The construction of pipelines requires the corridor of 30 feet.

This exception to the BMP should be granted by the BLM Authorized Officer because indurated bedrock, such as sandstone, is at or within 2 feet of the surface and the soil has a poor history for successful rehabilitation.

All facilities will be painted within six months of installation. Facilities required to comply with the Occupational Safety and Health Act (OSHA) will be excluded. The requested color is Carlsbad Canyon Brown (2.5Y 6/2), a non-reflective earthtone.

Interim Surface Reclamation Plan:

This exception is requested due to the current twin and multi-well program. If determined that this well will not be a candidate for either twinning &/or multi-well the operator shall spread the topsoil pile on the location up to the rig anchor points. The location will be reshaped to the original contour to the extent possible. The operator will reseed the area using the BLM recommended seed mixture and reclamation methods.

5. Location and Type of Water Supply:

Please see the Natural Buttes SOP.

6. Source of Construction Materials:

Please see the Natural Buttes SOP.

7. Methods of Handling Waste Materials:

Please see the Natural Buttes SOP.

A plastic reinforced liner is to be used as discussed during on-site inspection. It will be a minimum of **20 mil thick and felt**, with sufficient bedding used to cover any rocks. The liner will overlap the pit walls and be covered with dirt and/or rocks to hold it in place. No trash or scrap that could puncture the liner will be disposed of in the pit.

Any produced water from the proposed well will be contained in a water tank and will then be hauled by truck to one of the pre-approved disposal sites: RNI, Sec. 5, T9S, R22E, NBU #159, Sec. 35, T9S R21E, Ace Oilfield, Sec. 2, T6S, R20E, MC&MC, Sec. 12, T6S, R19E, Pipeline Facility Sec. 36, T9S, R20E, Goat Pasture Evaporation Pond SW/4 Sec. 16, T10S, R22E, Bonanza Evaporation Pond Sec. 2, T10S, R23E (*Request is in lieu of filing Form 3160-5, after initial production*).

8. Ancillary Facilities:

Please see the Natural Buttes SOP.

9. **Well Site Layout:** (See Location Layout Diagram)

The attached Location Layout Diagram describes drill pad cross-sections, cuts and fills, and locations of the mud tanks, reserve pit, flare pit, pipe racks, trailer parking, spoil dirt stockpile(s), and surface material stockpile(s).

Please see the attached diagram to describe rig orientation, parking areas, and access roads.

Location size may change prior to the drilling of the well due to the current rig availability. If the proposed location is not large enough to accommodate the drilling rig. The location will be re-surveyed and a form 3160-5 will be submitted.

10. **Plans for Reclamation of the Surface:**

Please see the Natural Buttes SOP.

upon reclamation of the pit the following seed mixture will be used. A total of 12 lbs/acre will be used if the seeds are drilled (24 lbs/acre if the seeds are broadcast). The per acre requirements for *drilled* seed are:

Black Sagebrush	8 lbs.
-----------------	--------

Operator shall call the BLM for the seed mixture when final reclamation occurs.

11. **Surface/Mineral Ownership:**

United States of America
Bureau of Land Management
170 South 500 East
Vernal, UT 84078
(435)781-4400

12. **Stipulations/Notices/Mitigation:**

Proximity to creeks, ponds, or lakes: Bitter Creek.

A closed loop is necessary, as this location is in the 100 year floodplain.

There are wetlands in the area that could be impacted.

13. **Other Information:**

A Class III archaeological survey and a paleontological survey have been performed and will be submitted.

This location is not within 460' from the boundary of the Natural Buttes Unit, nor is it within 460' of any non-committed tract lying within the boundaries of the Unit.

13. **Lessee's or Operator's Representative & Certification:**

Kevin McIntyre
Regulatory Analyst I
Kerr-McGee Oil & Gas Onshore LP
P.O. Box 173779
Denver, CO 80217-3779
(720) 929-6226

Randy Bayne
Drilling Manager
Kerr-McGee Oil & Gas Onshore LP
1368 South 1200 East
Vernal, UT 84078
(435) 781-7018

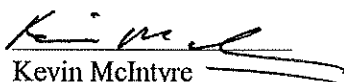
Certification: All lease and/or unit operations will be conducted in such a manner that full compliance is made with all applicable laws, regulations, Onshore Oil and Gas Orders, the approved Plan of Operations, and any applicable Notice to Lessees.

Kerr-McGee Oil & Gas Onshore LP is considered to be the operator of the subject well. Kerr-McGee Oil & Gas Onshore LP agrees to be responsible under the terms and conditions of the lease for the operations conducted upon leased lands.

The Operator will be fully responsible for the actions of its subcontractors. A complete copy of the approved "Application for Permit to Drill" will be furnished to the field representative(s) to ensure compliance and shall be on location during all construction and drilling operations.

Bond coverage pursuant to 43 CFR 3104 for lease activities is being provided by Bureau of Land Management Nationwide Bond #WYB000291.

I hereby certify that I, or persons under my supervision, have inspected the proposed drill site and access route, that I am familiar with the conditions that currently exist; that the statements made in this plan are, to the best of my knowledge, true and correct; and the work associated with the operations proposed herein will be performed by the Operator, its contractors, and subcontractors in conformity with this plan and the terms and conditions under which it is approved.


Kevin McIntyre

8/23/2008

Date

Kerr McGee Oil & Gas Onshore LP
NBU #1022-34F
SECTION 34, T10S, R22E, S.L.B.&M.

PROCEED IN A WESTERLY DIRECTION FROM VERNAL, UTAH ALONG U.S. HIGHWAY 40 APPROXIMATELY 14.0 MILES TO THE JUNCTION OF STATE HIGHWAY 88; EXIT LEFT AND PROCEED IN A SOUTHERLY DIRECTION APPROXIMATELY 17.0 MILES TO OURAY, UTAH; PROCEED IN A SOUTHERLY, THEN SOUTHEASTERLY DIRECTION APPROXIMATELY 11.2 MILES ON THE SHEEP RIDGE ROAD TO THE JUNCTION OF THIS ROAD AND AN EXISTING ROAD TO THE EAST; TURN LEFT AND PROCEED IN AN EASTERLY, THEN SOUTHEASTERLY DIRECTION APPROXIMATELY 10.7 MILES TO THE JUNCTION OF THIS ROAD AND AN EXISTING ROAD TO THE EAST; PROCEED IN AN EASTERLY DIRECTION APPROXIMATELY 1.6 MILES TO THE JUNCTION OF THIS ROAD AND AN EXISTING ROAD TO THE SOUTHEAST; PROCEED IN A SOUTHEASTERLY DIRECTION APPROXIMATELY 0.1 MILES TO THE JUNCTION OF THIS ROAD AND AN EXISTING ROAD TO THE SOUTH; TURN LEFT AND PROCEED IN A SOUTHERLY, THEN SOUTHWESTERLY DIRECTION APPROXIMATELY 1.1 MILES TO THE BEGINNING OF THE PROPOSED ACCESS TO THE SOUTH; FOLLOW ROAD FLAGS IN A SOUTHERLY DIRECTION APPROXIMATELY 160' TO THE PROPOSED LOCATION.

TOTAL DISTANCE FROM VERNAL, UTAH TO THE PROPOSED WELL LOCATION IS APPROXIMATELY 55.7 MILES.

Kerr-McGee Oil & Gas Onshore LP

NBU #1022-34F

LOCATED IN UINTAH COUNTY, UTAH
SECTION 34, T10S, R22E, S.L.B.&M.



PHOTO: VIEW FROM CORNER #5 TO LOCATION STAKE

CAMERA ANGLE: EASTERLY



PHOTO: VIEW FROM BEGINNING OF PROPOSED ACCESS

CAMERA ANGLE: SOUTHEASTERLY



Since 1964

UELS Uintah Engineering & Land Surveying
85 South 200 East Vernal, Utah 84078
435-789-1017 uels@uelsinc.com

LOCATION PHOTOS	08	22	06	PHOTO
TAKEN BY: J.F.	MONTH	DAY	YEAR	
DRAWN BY: D.C.	REVISED: 00-00-00			

Kerr-McGee Oil & Gas Onshore LP

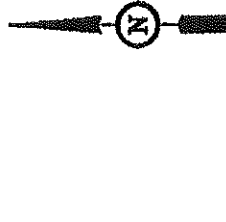
Well location, NBU #1022-34F, located as shown in the SE 1/4 NW 1/4 of Section 34, T10S, R22E, S.L.B.&M., Uintah County, Utah.

BASIS OF ELEVATION

TWO WATER TRIANGULATION STATION LOCATED IN THE NW 1/4 OF SECTION 1, T10S, R21E, S.L.B.&M., TAKEN FROM THE BIG PACK MOUNTAIN NE, QUADRANGLE, UTAH, UTAH COUNTY, 7.5 MINUTE QUAD. (TOPOGRAPHIC MAP) PUBLISHED BY THE UNITED STATES DEPARTMENT OF THE INTERIOR, GEOLOGICAL SURVEY. SAID ELEVATION IS MARKED AS BEING 5238 FEET.

BASIS OF BEARINGS

BASIS OF BEARINGS IS A G.P.S. OBSERVATION.



THIS IS TO CERTIFY THAT THE INFORMATION CONTAINED HEREIN FROM FIELD NOTES OF ACTUAL SURVEY MADE BY ME OR UNDER MY SUPERVISION AND THAT THE SAME ARE TRUE AND CORRECT TO THE BEST OF MY KNOWLEDGE AND BELIEF.

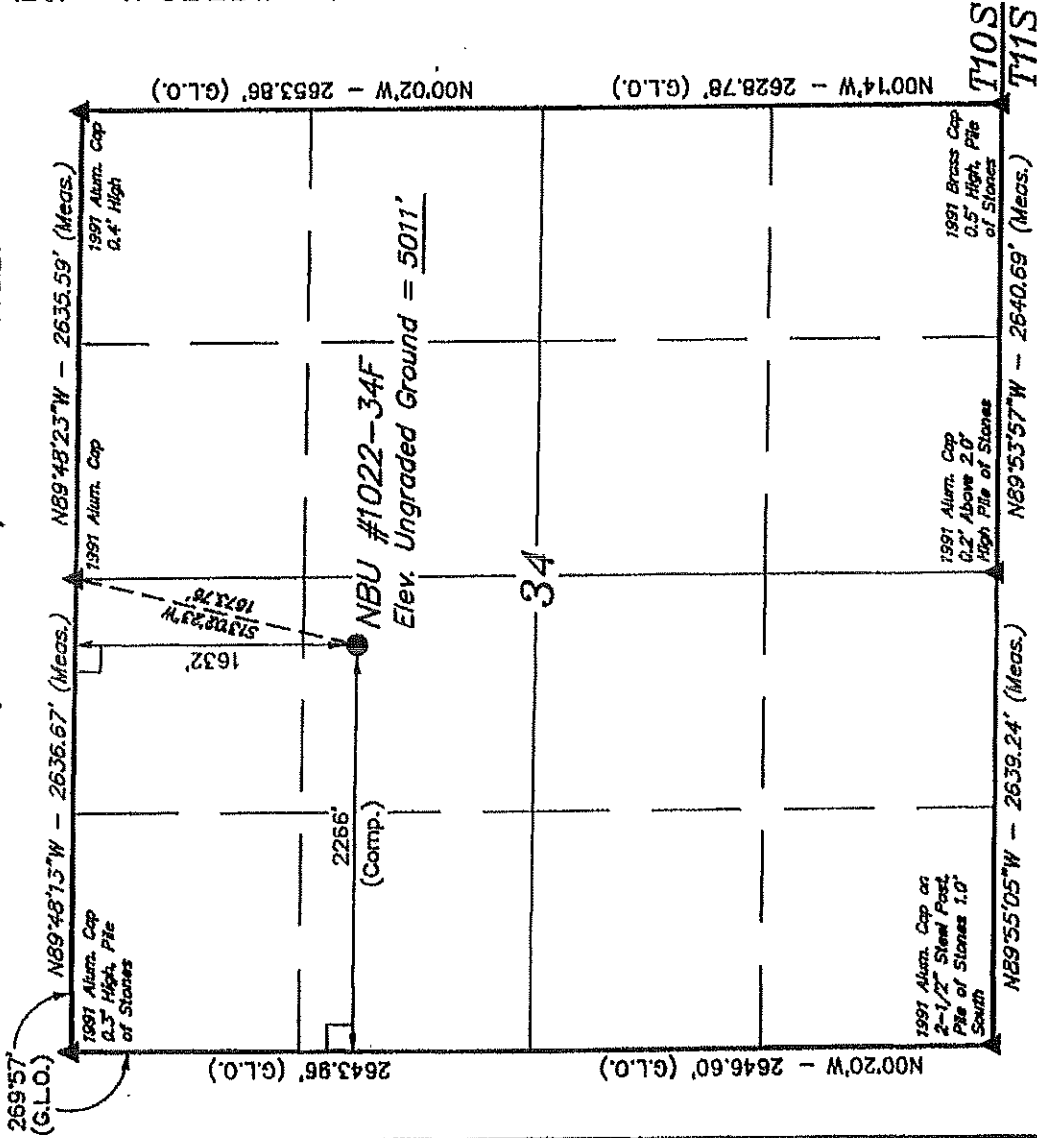
S.C.A. LEBLANC
 REGISTERED LAND SURVEYOR
 REG. STATE AND LAND SURVEYOR
 REGISTRATION NO. 191519
 STATE OF UTAH

UINTAH ENGINEERING & LAND SURVEYING

85 SOUTH 200 EAST - VERNAL, UTAH 84078
 (435) 789-1017

SCALE 1" = 1000'	DATE SURVEYED: 08-16-06	DATE DRAWN: 08-21-06
PARTY J.F. J.K. P.M.	REFERENCES G.L.O. PLAT	
WEATHER HOT	FILE Kerr-McGee Oil & Gas Onshore LP	

T10S, R22E, S.L.B.&M.



LEGEND:

- = 90° SYMBOL
- = PROPOSED WELL HEAD.
- ▲ = SECTION CORNERS LOCATED.

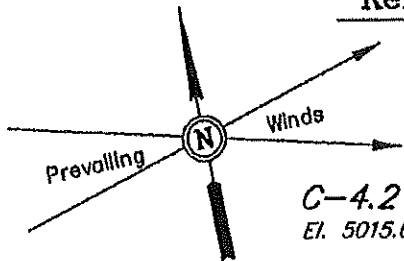
(NAD 83)
 LATITUDE = 39°54'29.52" (39.908200)
 LONGITUDE = 109°25'37.99" (109.427219)
 (NAD 27)
 LATITUDE = 39°54'29.64" (39.908233)
 LONGITUDE = 109°25'35.54" (109.426539)

Kerr-McGee Oil & Gas Onshore LP

FIGURE #1

LOCATION LAYOUT FOR

NBU #1022-34F
SECTION 34, T10S, R22E, S.L.B.&M.
1632' FNL 2266' FWL

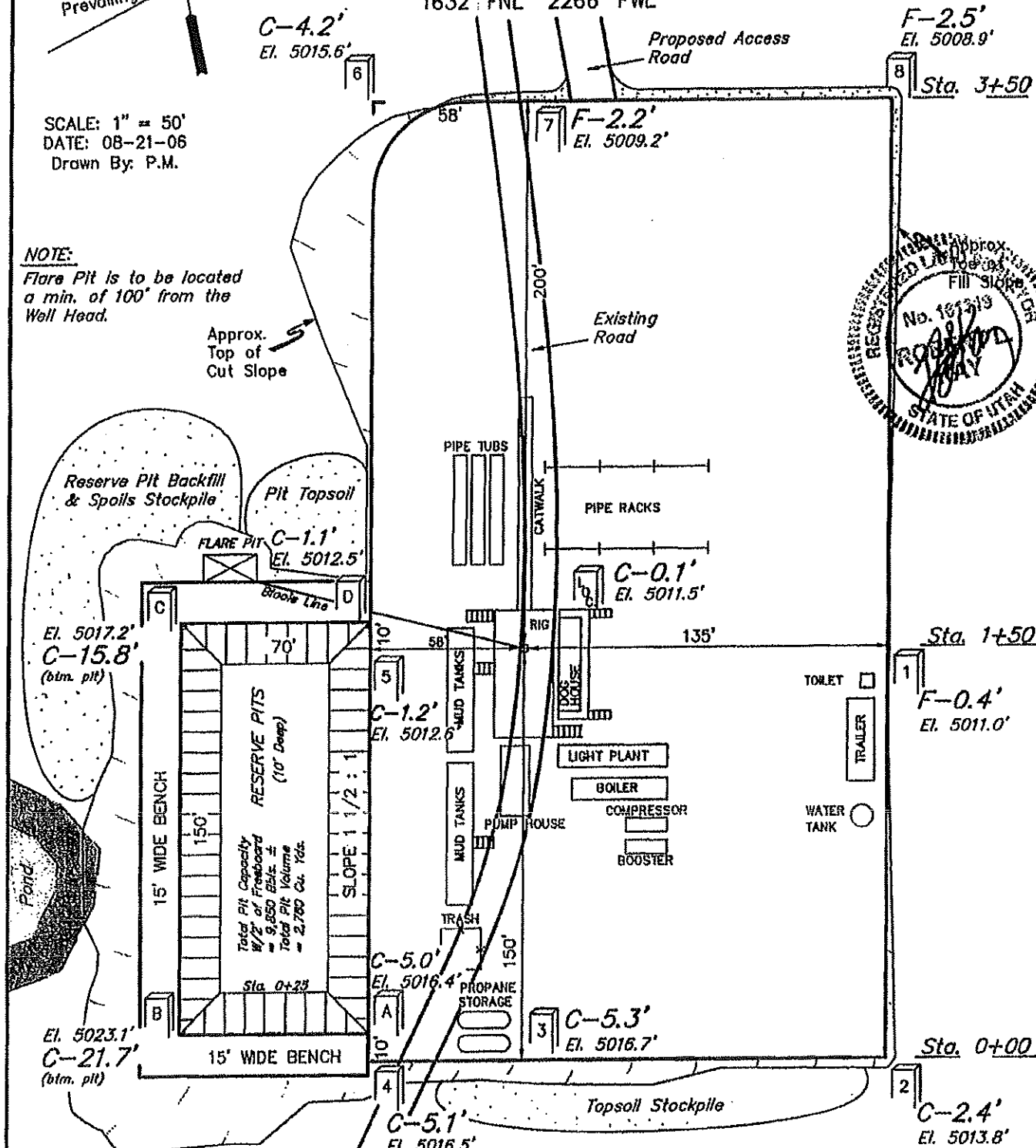
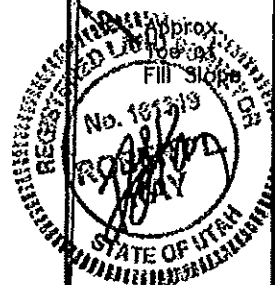


SCALE: 1" = 50'
 DATE: 08-21-06
 Drawn By: P.M.

NOTE:

Flare Pit is to be located a min. of 100' from the Well Head.

Approx. Top of Cut Slope



NOTES:

Elev. Ungraded Ground At Loc. Stake = 5011.5'
 FINISHED GRADE ELEV. AT LOC. STAKE = 5011.4'

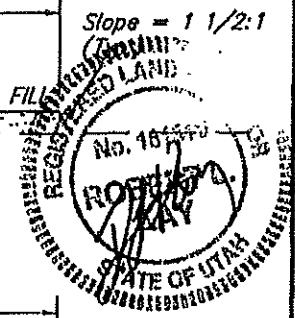
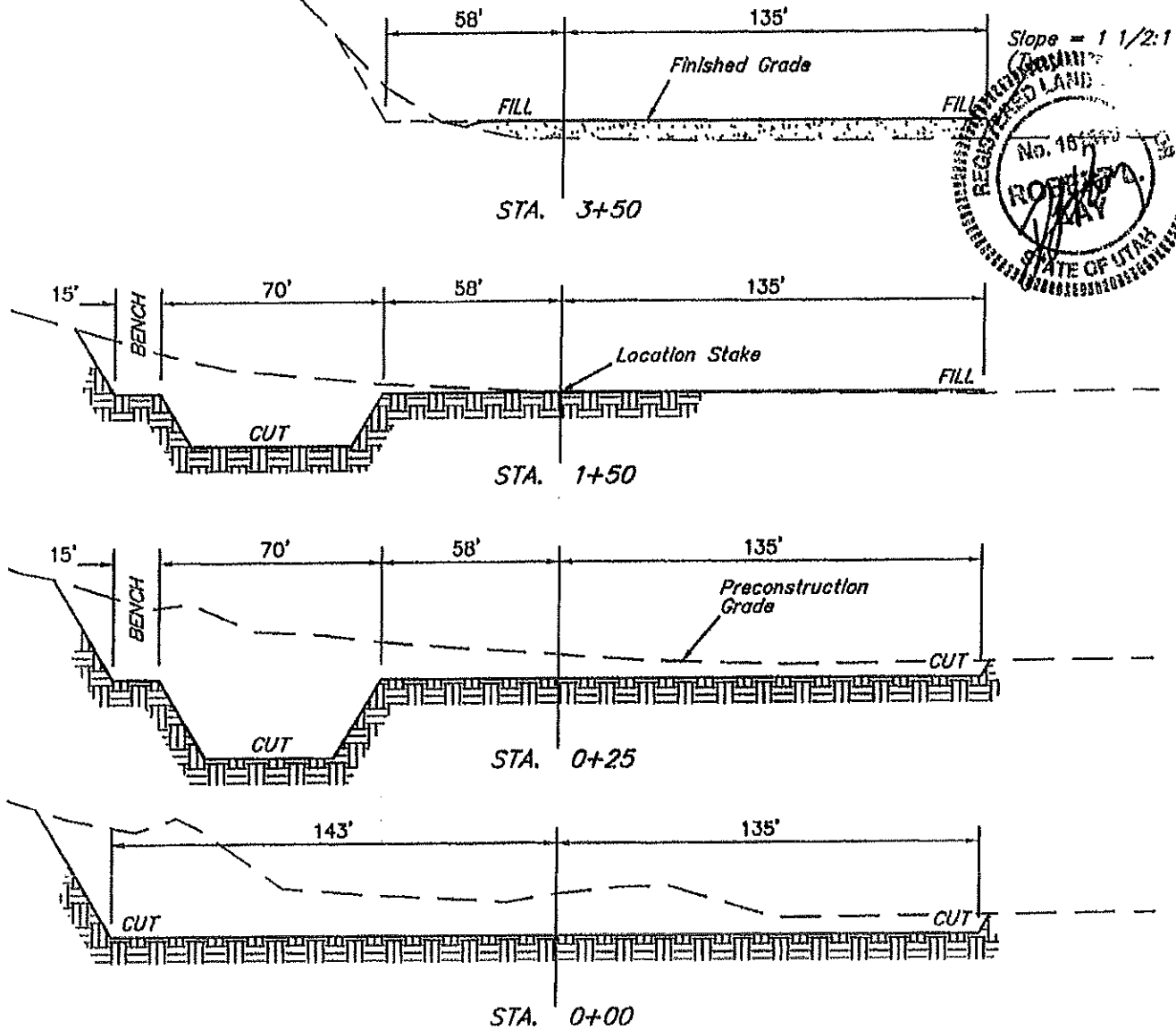
UINTAH ENGINEERING & LAND SURVEYING
 85 So. 200 East • Vernal, Utah 84078 • (435) 789-1017

Kerr-McGee Oil & Gas Onshore LP

FIGURE #2

TYPICAL CROSS SECTIONS FOR
 NBU #1022-34F
 SECTION 34, T10S, R22E, S.L.B.&M.
 1632' FNL 2266' FWL

1" = 20'
 X-Section Scale
 1" = 50'
 DATE: 08-21-06
 Drawn By: P.M.



NOTE:
 Topsoil should not be Stripped Below Finished Grade on Substructure Area.

*** NOTE:**
 FILL QUANTITY INCLUDES 5% FOR COMPACTION

APPROXIMATE YARDAGES

CUT	
(6") Topsoil Stripping	= 1,800 Cu. Yds.
Remaining Location	= 8,730 Cu. Yds.
TOTAL CUT	= 10,530 CU.YDS.
FILL	= 2,030 CU.YDS.

EXCESS MATERIAL	= 8,500 Cu. Yds.
Topsoil & Pit Backfill (1/2 Pit Vol.)	= 3,190 Cu. Yds.
EXCESS UNBALANCE (After Interim Rehabilitation)	= 5,310 Cu. Yds.

UINTAH ENGINEERING & LAND SURVEYING
 85 So. 200 East • Vernal, Utah 84078 • (435) 788-1017

Kerr-McGee Oil & Gas Onshore LP

NBU #1022-34F
PIPELINE ALIGNMENT

LOCATED IN UTAH COUNTY, UTAH
SECTION 34, T10S, R22E, S.L.B.&M.

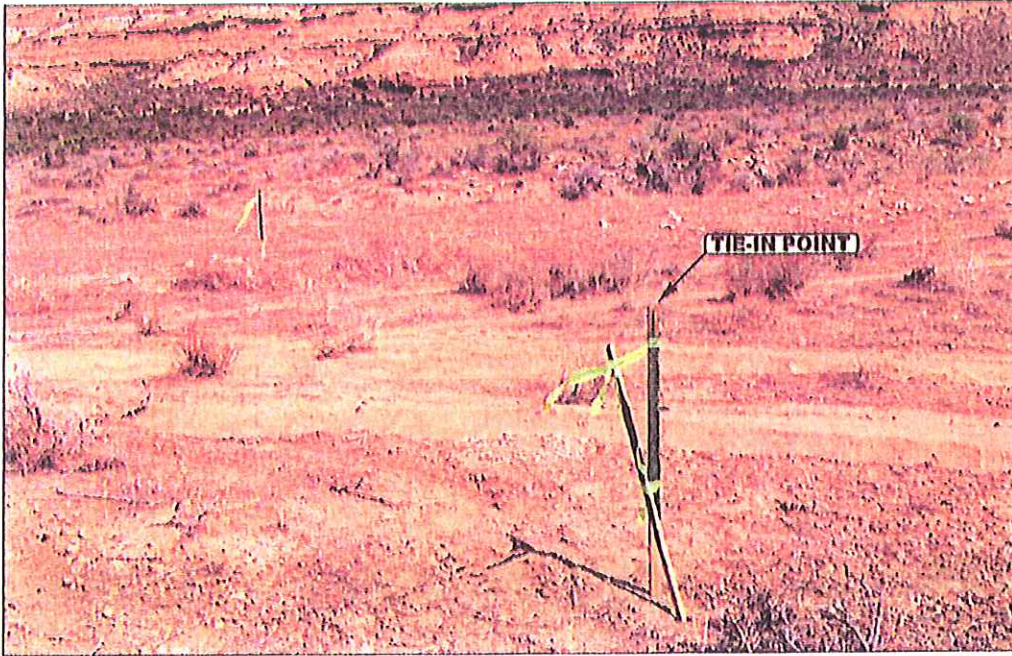


PHOTO: VIEW OF TIE-IN POINT

CAMERA ANGLE: NORTHEASTERLY



PHOTO: VIEW OF PIPELINE ALIGNMENT

CAMERA ANGLE: SOUTHERLY



UELS Uintah Engineering & Land Surveying
85 South 200 East Vernal, Utah 84078
435-789-1017 uels@uelsinc.com

Since 1961

PIPELINE PHOTOS	08	22	06	PHOTO
TAKEN BY: J.R.	MONTH	DAY	YEAR	
DRAWN BY: B.C.	REVISED: 00-00-00			



PROPOSED LOCATION:
 NBU #1022-34F

LEGEND:

● PROPOSED LOCATION

Kerr-McGee Oil & Gas Onshore LP

NBU #1022-34F

SECTION 34, T10S, R22E, S.L.B.&M.

1632' FNL 2266' FWL



Utah Engineering & Land Surveying
 85 South 200 East Vernal, Utah 84078
 (435) 789-1017 * FAX (435) 789-1813

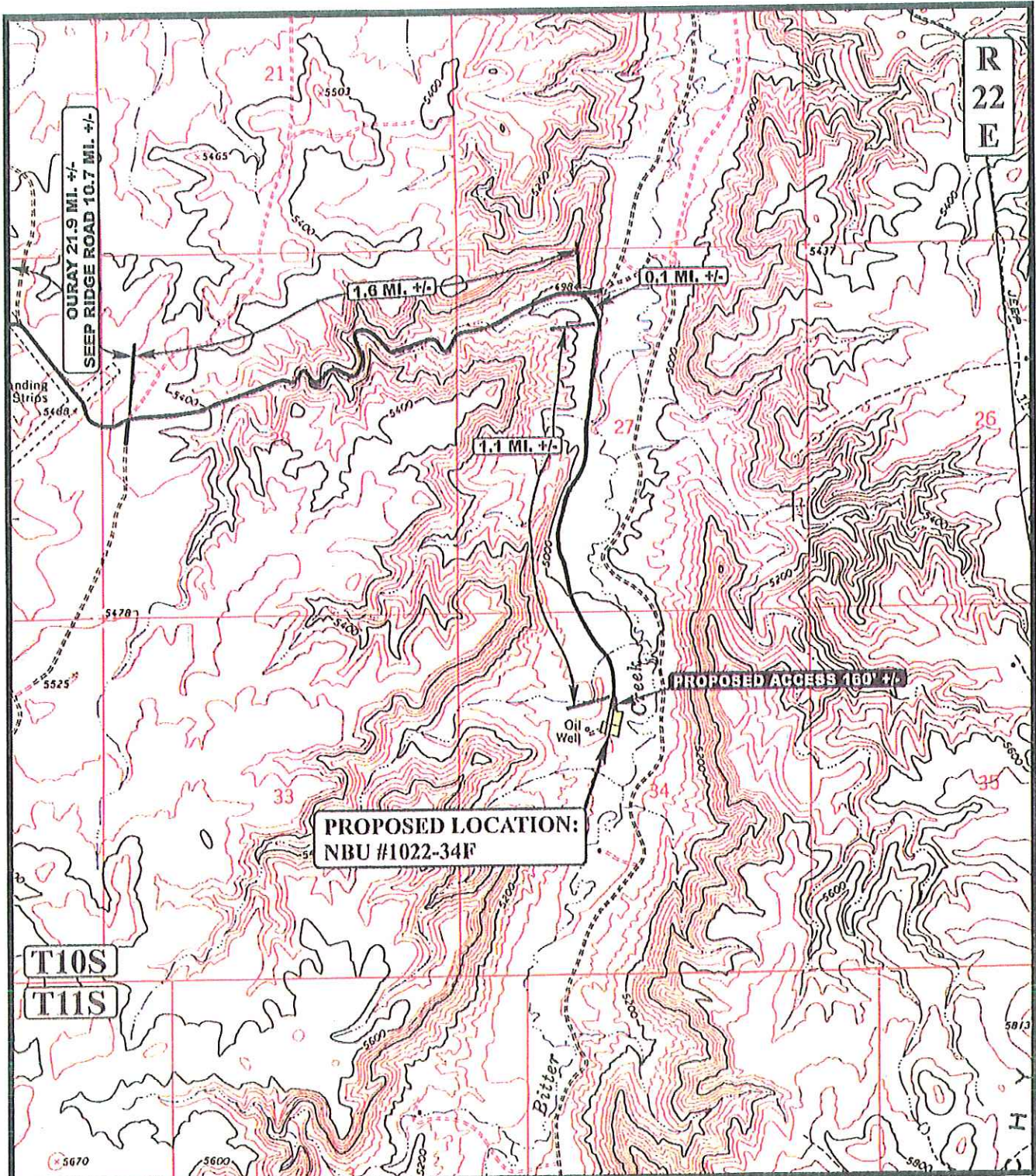


TOPOGRAPHIC
MAP

08 22 06
 MONTH DAY YEAR

SCALE: 1:100,000 | DRAWN BY: B.C. | REVISED: 00-00-00





**PROPOSED LOCATION:
NBU #1022-34F**

LEGEND:

- EXISTING ROAD
- - - - - PROPOSED ACCESS ROAD

Kerr-McGee Oil & Gas Onshore LP

NBU #1022-34F
SECTION 34, T10S, R22E, S.L.B.&M.
1632' FNL 2266' FWL

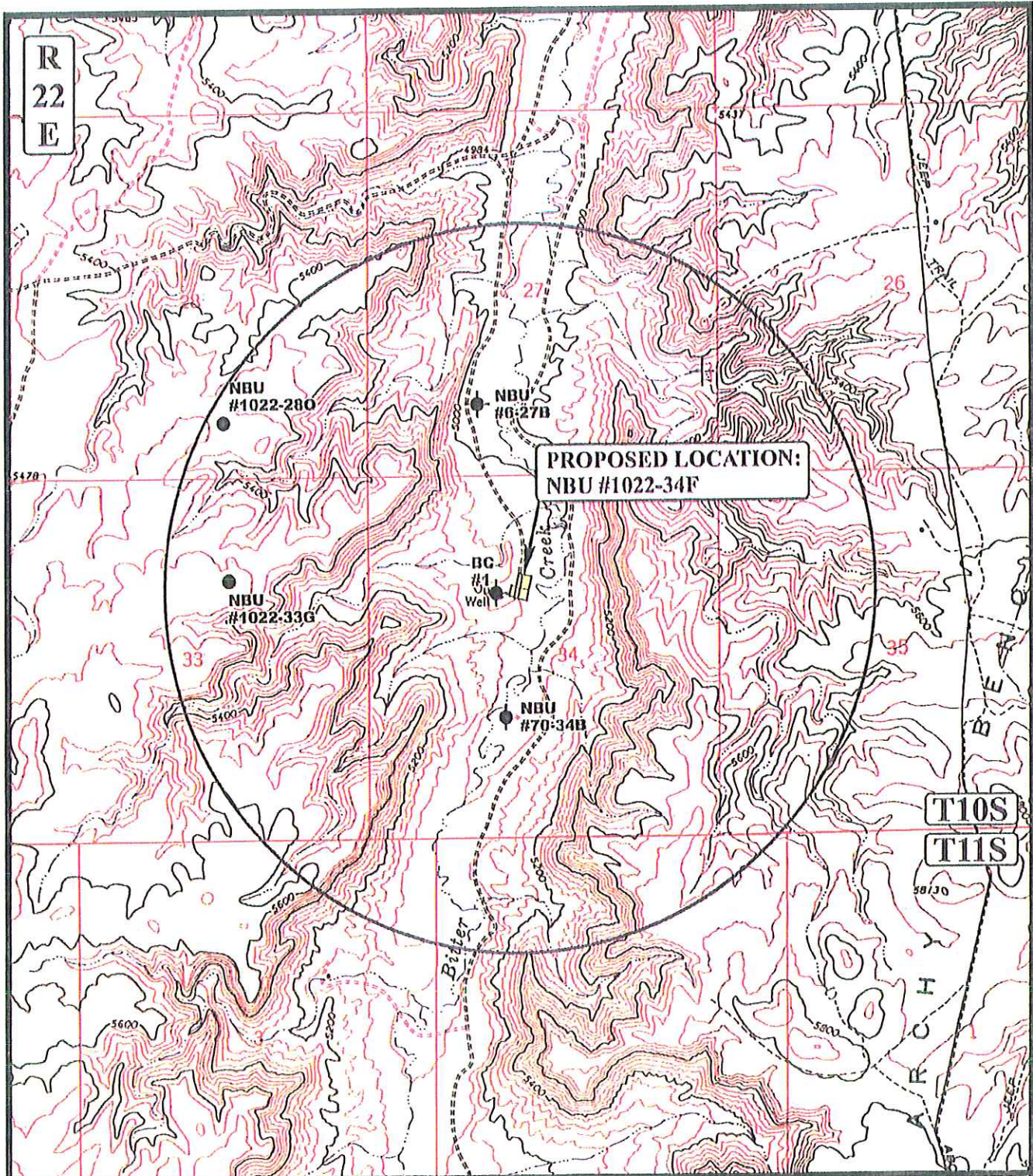


Uintah Engineering & Land Surveying
85 South 200 East Vernal, Utah 84078
(435) 789-1017 * FAX (435) 789-1813



TOPOGRAPHIC MAP 08 22 06
MONTH DAY YEAR
SCALE: 1" = 2000' DRAWN BY: B.C. | REVISED: 00-00-00





**PROPOSED LOCATION:
NBU #1022-34F**

LEGEND:

- | | |
|-------------------|-------------------------|
| ⊘ DISPOSAL WELLS | ♂ WATER WELLS |
| ● PRODUCING WELLS | ⊖ ABANDONED WELLS |
| ⊙ SHUT IN WELLS | ⊖ TEMPORARILY ABANDONED |

Kerr-McGee Oil & Gas Onshore LP

NBU #1022-34F
SECTION 34, T10S, R22E, S.L.B.&M.
1632' FNL 2266' FWL



Uintah Engineering & Land Surveying
 85 South 200 East Vernal, Utah 84078
 (435) 789-1017 * FAX (435) 789-1813

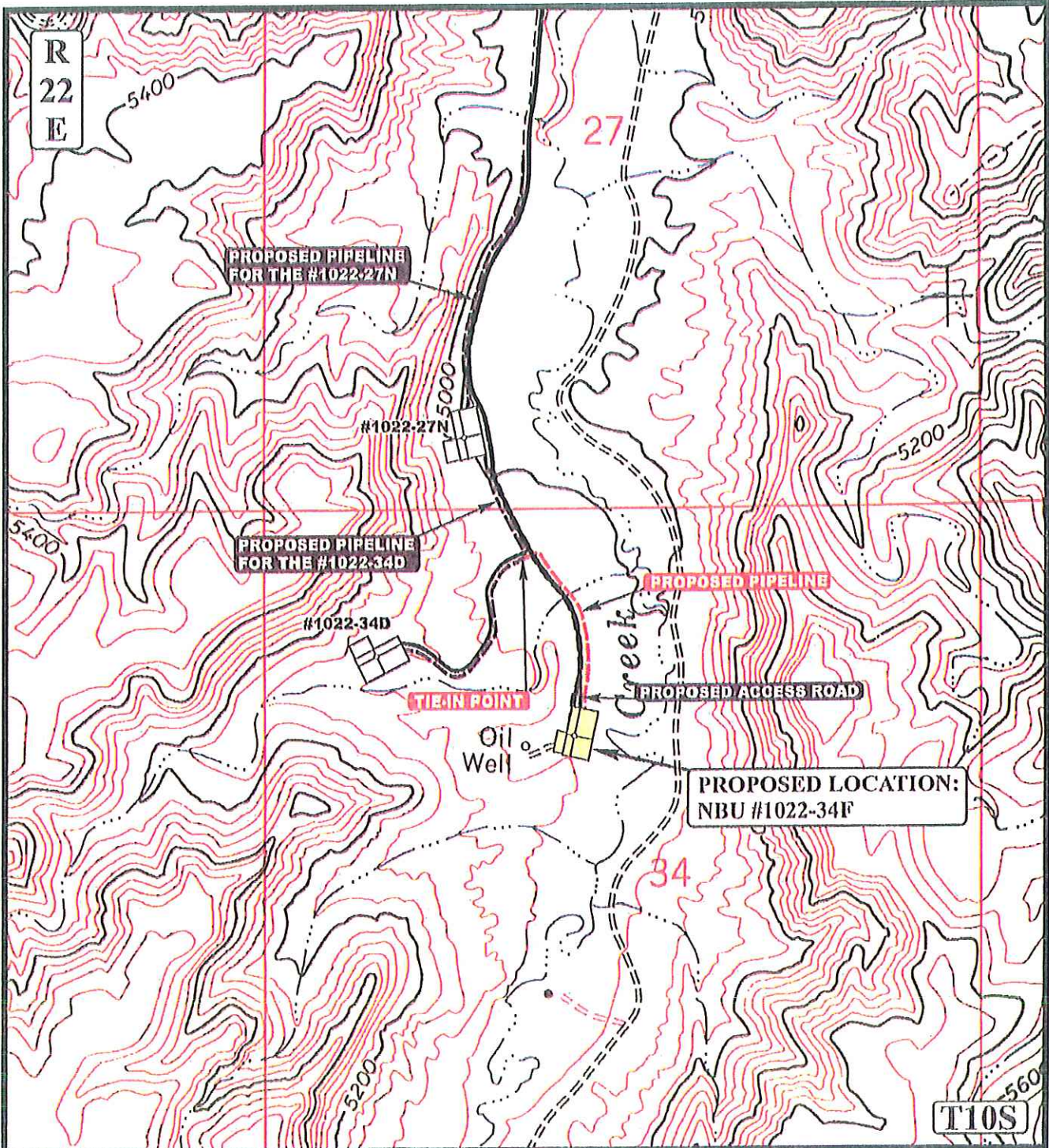


TOPOGRAPHIC

08 22 06
 MONTH DAY YEAR



SCALE: 1" = 2000' DRAWN BY: B.C. REVISED: 00-00-00



APPROXIMATE TOTAL PIPELINE DISTANCE = 1,255' +/-

LEGEND:

- PROPOSED ACCESS ROAD
- EXISTING PIPELINE
- PROPOSED PIPELINE
- PROPOSED PIPELINE (SERVICING OTHER WELLS)



Kerr-McGee Oil & Gas Onshore LP

NBU #1022-34F

SECTION 34, T10S, R22E, S.L.B.&M.

1632' FNL 2266' FWL



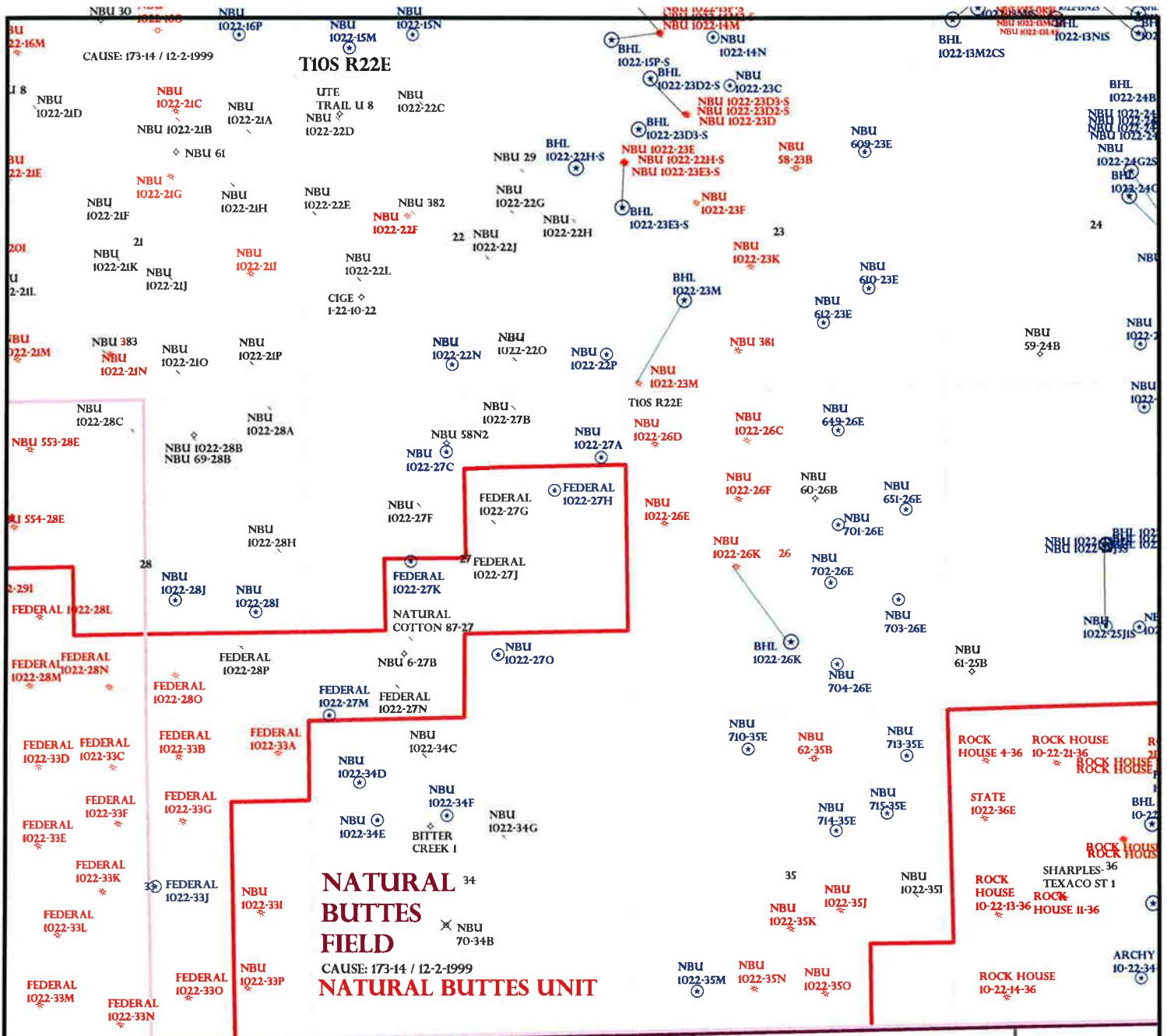
Uintah Engineering & Land Surveying
 85 South 200 East Vernal, Utah 84078
 (435) 789-1017 * FAX (435) 789-1813

TOPOGRAPHIC
MAP

08 22 06
 MONTH DAY YEAR

D
 TOPO

SCALE: 1" = 1000' DRAWN BY: B.C. REVISED: 00-00-00



OPERATOR: KERR MCGEE O&G (N2995)

SEC: 22,27,34,35 T.9S R. 21E

FIELD: NATURAL BUTTES (630)

COUNTY: UINTAH

CAUSE: 173-14 / 12-2-1999

- Field Status**
- ABANDONED
 - ACTIVE
 - COMBINED
 - INACTIVE
 - PROPOSED
 - STORAGE
 - TERMINATED

- Unit Status**
- EXPLORATORY
 - GAS STORAGE
 - NF PP OIL
 - NF SECONDARY
 - PENDING
 - PI OIL
 - PP GAS
 - PP GEOTHERML
 - PP OIL
 - SECONDARY
 - TERMINATED

- Wells Status**
- GAS INJECTION
 - GAS STORAGE
 - LOCATION ABANDONED
 - NEW LOCATION
 - PLUGGED & ABANDONED
 - PRODUCING GAS
 - PRODUCING OIL
 - SHUT-IN GAS
 - SHUT-IN OIL
 - TEMP. ABANDONED
 - TEST WELL
 - WATER INJECTION
 - WATER SUPPLY
 - WATER DISPOSAL
 - DRILLING



PREPARED BY: DIANA MASON
DATE: 26-AUGUST-2008

United States Department of the Interior

BUREAU OF LAND MANAGEMENT

Utah State Office
P.O. Box 45155
Salt Lake City, Utah 84145-0155

IN REPLY REFER TO:
3160
(UT-922)

September 2, 2008

Memorandum

To: Assistant District Manager Minerals, Vernal District
From: Michael Coulthard, Petroleum Engineer
Subject: 2008 Plan of Development Natural Buttes Unit
Uintah County, Utah.

Pursuant to email between Diana Whitney, Division of Oil, Gas and Mining, and Mickey Coulthard, Utah State Office, Bureau of Land Management, the following wells are planned for calendar year 2008 within the Natural Buttes Unit, Uintah County, Utah.

API #	WELL NAME	LOCATION
-------	-----------	----------

(Proposed PZ Wasatch/MesaVerde)

43-047-50098	NBU 1022-27A Sec 27	T10S R22E 1058 FNL 0413 FEL
43-047-50095	NBU 1022-34E Sec 34	T10S R22E 1687 FNL 1113 FWL
43-047-50094	NBU 1022-35M Sec 35	T10S R22E 0683 FSL 1058 FWL
43-047-50093	NBU 1022-34F Sec 34	T10S R22E 1632 FNL 2266 FWL
43-047-50080	NBU 922-33ET Sec 33	T09S R22E 2446 FNL 0673 FWL
43-047-50084	NBU 1022-22N Sec 22	T10S R22E 0515 FSL 2467 FWL
43-047-50086	NBU 1022-1P Sec 01	T10S R22E 0310 FSL 0971 FEL

This office has no objection to permitting the wells at this time.

/s/ Michael L. Coulthard

bcc: File - Natural Buttes Unit
Division of Oil Gas and Mining
Central Files
Agr. Sec. Chron
Fluid Chron

MCoulthard:mc:9-2-08

**WORKSHEET
APPLICATION FOR PERMIT TO DRILL**

APD RECEIVED: 8/23/2008

API NO. ASSIGNED: 43047500930000

WELL NAME: NBU 1022-34F

OPERATOR: KERR-MCGEE OIL & GAS ONSHORE, L.P. (N2995)

PHONE NUMBER: 720 929-6226

CONTACT: Kevin McIntyre

PROPOSED LOCATION: SENW 34 100S 220E

Permit Tech Review:

SURFACE: 1632 FNL 2266 FWL

Engineering Review:

BOTTOM: 1632 FNL 2266 FWL

Geology Review:

COUNTY: UINTAH

LATITUDE: 39.90815

LONGITUDE: -109.42648

UTM SURF EASTINGS: 634502.00

NORTHINGS: 4418538.00

FIELD NAME: NATURAL BUTTES

LEASE TYPE: 1 - Federal

LEASE NUMBER: UTU-037166

PROPOSED FORMATION: WSMVD

SURFACE OWNER: 1 - Federal

COALBED METHANE: NO

RECEIVED AND/OR REVIEWED:

- PLAT**
- Bond:** FEDERAL - WYB000291
- Potash**
- Oil Shale 190-5**
- Oil Shale 190-3**
- Oil Shale 190-13**
- Water Permit:** Water permit # 43-8496
- RDCC Review:**
- Fee Surface Agreement**
- Intent to Commingle**

LOCATION AND SITING:

- R649-2-3.**
Unit: NATURAL BUTTES
 - R649-3-2. General**
 - R649-3-3. Exception**
 - Drilling Unit**
Board Cause No: 173-14
Effective Date: 12/22/1999
Siting: 460' fr u bdry & uncomm. tract
 - R649-3-11. Directional Drill**
-

Comments: Presite Completed

Stipulations: 4 - Federal Approval - dmason
17 - Oil Shale 190-5(b) - dmason



JON M. HUNTSMAN, JR.
Governor

GARY R. HERBERT
Lieutenant Governor

State of Utah

DEPARTMENT OF NATURAL RESOURCES

MICHAEL R. STYLER
Executive Director

Division of Oil, Gas and Mining

JOHN R. BAZA
Division Director

Permit To Drill

Well Name: NBU 1022-34F
API Well Number: 43047500930000
Lease Number: UTU-037166
Surface Owner: FEDERAL
Approval Date: 9/11/2008

Issued to:

KERR-MCGEE OIL & GAS ONSHORE, L.P. , P.O. Box 173779, Denver, CO 80217

Authority:

Pursuant to Utah Code Ann. §40-6-1 et seq., and Utah Administrative Code R649-3-1 et seq., the Utah Division of Oil, Gas and Mining issues conditions of approval, and permit to drill the listed well. This permit is issued in accordance with the requirements of CAUSE: 173-14.

Duration:

This approval shall expire one year from the above date unless substantial and continuous operation is underway, or a request for extension is made prior to the expiration date

General:

Compliance with the requirements of Utah Admin. R. 649-1 et seq., the Oil and Gas Conservation General Rules, and the applicable terms and provisions of the approved Application for permit to drill.

Conditions of Approval:

State approval of this well does not supercede the required federal approval, which must be obtained prior to drilling.

In accordance with the Order in Cause No. 190-5(b) dated October 28, 1982, the operator shall comply with the requirements of Rules R649-3-31 and R649-3-27 pertaining to Designated Oil Shale Areas. Additionally, the operators shall ensure that the surface and or production casing is properly cemented over the entire oil shale section as defined by Rule R649-3-31. The Operator shall report the actual depth the oil shale is encountered to the division.

Notification Requirements:

Notify the Division with 24 hours of spudding the well.

- Contact Carol Daniels at (801) 538-5284.

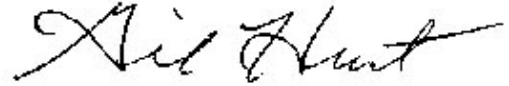
Notify the Division prior to commencing operations to plug and abandon the well.

- Contact Dustin Doucet at (801) 538-5281 office (801) 733-0983 home

Reporting Requirements:

All required reports, forms and submittals will be promptly filed with the Division, including but not limited to the Entity Action Form (Form 6), Report of Water Encountered During Drilling (Form 7), Weekly Progress Reports for drilling and completion operations, and Sundry Notices and Reports on Wells requesting approval of change of plans or other operational actions.

Approved By:

A handwritten signature in black ink, appearing to read "Gil Hunt". The signature is written in a cursive, flowing style with a long horizontal stroke extending to the right.

Gil Hunt
Associate Director, Oil & Gas

STATE OF UTAH DEPARTMENT OF NATURAL RESOURCES DIVISION OF OIL, GAS, AND MINING	FORM 9 5. LEASE DESIGNATION AND SERIAL NUMBER: UTU-037166
SUNDRY NOTICES AND REPORTS ON WELLS Do not use this form for proposals to drill new wells, significantly deepen existing wells below current bottom-hole depth, reenter plugged wells, or to drill horizontal laterals. Use APPLICATION FOR PERMIT TO DRILL form for such proposals.	6. IF INDIAN, ALLOTTEE OR TRIBE NAME: 7. UNIT or CA AGREEMENT NAME: NATURAL BUTTES
1. TYPE OF WELL Gas Well	8. WELL NAME and NUMBER: NBU 1022-34F
2. NAME OF OPERATOR: KERR-MCGEE OIL & GAS ONSHORE, L.P.	9. API NUMBER: 43047500930000
3. ADDRESS OF OPERATOR: P.O. Box 173779 1099 18th Street, Suite 600, Denver, CO, 80217 3779	PHONE NUMBER: 720 929-6007 Ext
4. LOCATION OF WELL FOOTAGES AT SURFACE: 1632 FNL 2266 FWL QTR/QTR, SECTION, TOWNSHIP, RANGE, MERIDIAN: Qtr/Qtr: SENW Section: 34 Township: 10.0S Range: 22.0E Meridian: S	9. FIELD and POOL or WILDCAT: NATURAL BUTTES COUNTY: UINTAH STATE: UTAH

11. CHECK APPROPRIATE BOXES TO INDICATE NATURE OF NOTICE, REPORT, OR OTHER DATA

TYPE OF SUBMISSION	TYPE OF ACTION		
<input checked="" type="checkbox"/> NOTICE OF INTENT Approximate date work will start: 9/7/2009	<input type="checkbox"/> ACIDIZE	<input type="checkbox"/> ALTER CASING	<input type="checkbox"/> CASING REPAIR
<input type="checkbox"/> SUBSEQUENT REPORT Date of Work Completion:	<input type="checkbox"/> CHANGE TO PREVIOUS PLANS	<input type="checkbox"/> CHANGE TUBING	<input type="checkbox"/> CHANGE WELL NAME
<input type="checkbox"/> SPUD REPORT Date of Spud:	<input type="checkbox"/> CHANGE WELL STATUS	<input type="checkbox"/> COMMINGLE PRODUCING FORMATIONS	<input type="checkbox"/> CONVERT WELL TYPE
<input type="checkbox"/> DRILLING REPORT Report Date:	<input type="checkbox"/> DEEPEN	<input type="checkbox"/> FRACTURE TREAT	<input type="checkbox"/> NEW CONSTRUCTION
	<input type="checkbox"/> OPERATOR CHANGE	<input type="checkbox"/> PLUG AND ABANDON	<input type="checkbox"/> PLUG BACK
	<input type="checkbox"/> PRODUCTION START OR RESUME	<input type="checkbox"/> RECLAMATION OF WELL SITE	<input type="checkbox"/> RECOMPLETE DIFFERENT FORMATION
	<input type="checkbox"/> REPERFORATE CURRENT FORMATION	<input type="checkbox"/> SIDETRACK TO REPAIR WELL	<input type="checkbox"/> TEMPORARY ABANDON
	<input type="checkbox"/> TUBING REPAIR	<input type="checkbox"/> VENT OR FLARE	<input type="checkbox"/> WATER DISPOSAL
	<input type="checkbox"/> WATER SHUTOFF	<input type="checkbox"/> SI TA STATUS EXTENSION	<input checked="" type="checkbox"/> APD EXTENSION
	<input type="checkbox"/> WILDCAT WELL DETERMINATION	<input type="checkbox"/> OTHER	OTHER: _____

12. DESCRIBE PROPOSED OR COMPLETED OPERATIONS. Clearly show all pertinent details including dates, depths, volumes, etc.

Kerr-McGee Oil & Gas Onshore, L.P. (Kerr-McGee) respectfully requests an extension to this APD for the maximum time allowed. Please contact the undersigned with any questions and/or comments. Thank you.

Approved by the Utah Division of Oil, Gas and Mining

Date: September 03, 2009

By:

NAME (PLEASE PRINT) Danielle Piernot	PHONE NUMBER 720 929-6156	TITLE Regulatory Analyst
SIGNATURE N/A	DATE 9/3/2009	



The Utah Division of Oil, Gas, and Mining

- State of Utah
- Department of Natural Resources

Electronic Permitting System - Sundry Notices

Request for Permit Extension Validation Well Number 43047500930000

API: 43047500930000

Well Name: NBU 1022-34F

Location: 1632 FNL 2266 FWL QTR SENW SEC 34 TWNP 100S RNG 220E MER S

Company Permit Issued to: KERR-MCGEE OIL & GAS ONSHORE, L.P.

Date Original Permit Issued: 9/15/2008

The undersigned as owner with legal rights to drill on the property as permitted above, hereby verifies that the information as submitted in the previously approved application to drill, remains valid and does not require revision. Following is a checklist of some items related to the application, which should be verified.

- If located on private land, has the ownership changed, if so, has the surface agreement been updated? Yes No
- Have any wells been drilled in the vicinity of the proposed well which would affect the spacing or siting requirements for this location? Yes No
- Has there been any unit or other agreements put in place that could affect the permitting or operation of this proposed well? Yes No
- Have there been any changes to the access route including ownership, or rightof- way, which could affect the proposed location? Yes No
- Has the approved source of water for drilling changed? Yes No
- Have there been any physical changes to the surface location or access route which will require a change in plans from what was discussed at the onsite evaluation? Yes No
- Is bonding still in place, which covers this proposed well? Yes No

**Approved by the
Utah Division of
Oil, Gas and Mining**

Signature: Danielle Piernot

Date: 9/3/2009

Title: Regulatory Analyst **Representing:** KERR-MCGEE OIL & GAS ONSHORE, L.P.

Date: September 03, 2009

By: 

STATE OF UTAH DEPARTMENT OF NATURAL RESOURCES DIVISION OF OIL, GAS, AND MINING	FORM 9 5. LEASE DESIGNATION AND SERIAL NUMBER: UTU-037166
SUNDRY NOTICES AND REPORTS ON WELLS Do not use this form for proposals to drill new wells, significantly deepen existing wells below current bottom-hole depth, reenter plugged wells, or to drill horizontal laterals. Use APPLICATION FOR PERMIT TO DRILL form for such proposals.	6. IF INDIAN, ALLOTTEE OR TRIBE NAME: 7. UNIT or CA AGREEMENT NAME: NATURAL BUTTES
1. TYPE OF WELL Gas Well	8. WELL NAME and NUMBER: NBU 1022-34F
2. NAME OF OPERATOR: KERR-MCGEE OIL & GAS ONSHORE, L.P.	9. API NUMBER: 43047500930000
3. ADDRESS OF OPERATOR: P.O. Box 173779 1099 18th Street, Suite 600, Denver, CO, 80217 3779	PHONE NUMBER: 720 929-6007 Ext
4. LOCATION OF WELL FOOTAGES AT SURFACE: 1632 FNL 2266 FWL QTR/QTR, SECTION, TOWNSHIP, RANGE, MERIDIAN: Qtr/Qtr: SENW Section: 34 Township: 10.0S Range: 22.0E Meridian: S	9. FIELD and POOL or WILDCAT: NATURAL BUTTES COUNTY: UINTAH STATE: UTAH

11. CHECK APPROPRIATE BOXES TO INDICATE NATURE OF NOTICE, REPORT, OR OTHER DATA

TYPE OF SUBMISSION	TYPE OF ACTION		
<input checked="" type="checkbox"/> NOTICE OF INTENT Approximate date work will start: 9/15/2010 <input type="checkbox"/> SUBSEQUENT REPORT Date of Work Completion: <input type="checkbox"/> SPUD REPORT Date of Spud: <input type="checkbox"/> DRILLING REPORT Report Date:	<input type="checkbox"/> ACIDIZE <input type="checkbox"/> CHANGE TO PREVIOUS PLANS <input type="checkbox"/> CHANGE WELL STATUS <input type="checkbox"/> DEEPEN <input type="checkbox"/> OPERATOR CHANGE <input type="checkbox"/> PRODUCTION START OR RESUME <input type="checkbox"/> REPERFORATE CURRENT FORMATION <input type="checkbox"/> TUBING REPAIR <input type="checkbox"/> WATER SHUTOFF <input type="checkbox"/> WILDCAT WELL DETERMINATION	<input type="checkbox"/> ALTER CASING <input type="checkbox"/> CHANGE TUBING <input type="checkbox"/> COMMINGLE PRODUCING FORMATIONS <input type="checkbox"/> FRACTURE TREAT <input type="checkbox"/> PLUG AND ABANDON <input type="checkbox"/> RECLAMATION OF WELL SITE <input type="checkbox"/> SIDETRACK TO REPAIR WELL <input type="checkbox"/> VENT OR FLARE <input type="checkbox"/> SI TA STATUS EXTENSION <input type="checkbox"/> OTHER	<input type="checkbox"/> CASING REPAIR <input type="checkbox"/> CHANGE WELL NAME <input type="checkbox"/> CONVERT WELL TYPE <input type="checkbox"/> NEW CONSTRUCTION <input type="checkbox"/> PLUG BACK <input type="checkbox"/> RECOMPLETE DIFFERENT FORMATION <input type="checkbox"/> TEMPORARY ABANDON <input type="checkbox"/> WATER DISPOSAL <input checked="" type="checkbox"/> APD EXTENSION OTHER: <input style="width: 100px;" type="text"/>

12. DESCRIBE PROPOSED OR COMPLETED OPERATIONS. Clearly show all pertinent details including dates, depths, volumes, etc.

Kerr-McGee Oil & Gas Onshore, L.P. (Kerr-McGee) respectfully requests an extension to this APD for the maximum time allowed. Please contact the undersigned with any questions and/or comments. Thank you.

**Approved by the
Utah Division of
Oil, Gas and Mining**

Date: September 20, 2010
 By:

NAME (PLEASE PRINT) Danielle Piernot	PHONE NUMBER 720 929-6156	TITLE Regulatory Analyst
SIGNATURE N/A		DATE 9/15/2010



The Utah Division of Oil, Gas, and Mining

- State of Utah
- Department of Natural Resources

Electronic Permitting System - Sundry Notices

Request for Permit Extension Validation Well Number 43047500930000

API: 43047500930000

Well Name: NBU 1022-34F

Location: 1632 FNL 2266 FWL QTR SENW SEC 34 TWNP 100S RNG 220E MER S

Company Permit Issued to: KERR-MCGEE OIL & GAS ONSHORE, L.P.

Date Original Permit Issued: 9/15/2008

The undersigned as owner with legal rights to drill on the property as permitted above, hereby verifies that the information as submitted in the previously approved application to drill, remains valid and does not require revision. Following is a checklist of some items related to the application, which should be verified.

- If located on private land, has the ownership changed, if so, has the surface agreement been updated? Yes No

- Have any wells been drilled in the vicinity of the proposed well which would affect the spacing or siting requirements for this location? Yes No

- Has there been any unit or other agreements put in place that could affect the permitting or operation of this proposed well? Yes No

- Have there been any changes to the access route including ownership, or rightof- way, which could affect the proposed location? Yes No

- Has the approved source of water for drilling changed? Yes No

- Have there been any physical changes to the surface location or access route which will require a change in plans from what was discussed at the onsite evaluation? Yes No

- Is bonding still in place, which covers this proposed well? Yes No

**Approved by the
Utah Division of
Oil, Gas and Mining**

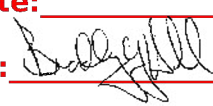
Signature: Danielle Piernot

Date: 9/15/2010

Title: Regulatory Analyst **Representing:** KERR-MCGEE OIL & GAS ONSHORE, L.P.

Date: September 20, 2010

By: 

STATE OF UTAH DEPARTMENT OF NATURAL RESOURCES DIVISION OF OIL, GAS, AND MINING		FORM 9
		5. LEASE DESIGNATION AND SERIAL NUMBER: UTU-037166
SUNDRY NOTICES AND REPORTS ON WELLS		6. IF INDIAN, ALLOTTEE OR TRIBE NAME:
Do not use this form for proposals to drill new wells, significantly deepen existing wells below current bottom-hole depth, reenter plugged wells, or to drill horizontal laterals. Use APPLICATION FOR PERMIT TO DRILL form for such proposals.		7. UNIT or CA AGREEMENT NAME: NATURAL BUTTES
1. TYPE OF WELL Gas Well		8. WELL NAME and NUMBER: NBU 1022-34F
2. NAME OF OPERATOR: KERR-MCGEE OIL & GAS ONSHORE, L.P.		9. API NUMBER: 43047500930000
3. ADDRESS OF OPERATOR: P.O. Box 173779 1099 18th Street, Suite 600, Denver, CO, 80217 3779	PHONE NUMBER: 720 929-6515 Ext	9. FIELD and POOL or WILDCAT: NATURAL BUTTES
4. LOCATION OF WELL FOOTAGES AT SURFACE: 1632 FNL 2266 FWL QTR/QTR, SECTION, TOWNSHIP, RANGE, MERIDIAN: Qtr/Qtr: SENW Section: 34 Township: 10.0S Range: 22.0E Meridian: S		COUNTY: UINTAH
		STATE: UTAH
11. CHECK APPROPRIATE BOXES TO INDICATE NATURE OF NOTICE, REPORT, OR OTHER DATA		
TYPE OF SUBMISSION	TYPE OF ACTION	
<input checked="" type="checkbox"/> NOTICE OF INTENT Approximate date work will start: 8/19/2011 <input type="checkbox"/> SUBSEQUENT REPORT Date of Work Completion: <input type="checkbox"/> SPUD REPORT Date of Spud: <input type="checkbox"/> DRILLING REPORT Report Date:	<input type="checkbox"/> ACIDIZE <input type="checkbox"/> CHANGE TO PREVIOUS PLANS <input type="checkbox"/> CHANGE WELL STATUS <input type="checkbox"/> DEEPEN <input type="checkbox"/> OPERATOR CHANGE <input type="checkbox"/> PRODUCTION START OR RESUME <input type="checkbox"/> REPERFORATE CURRENT FORMATION <input type="checkbox"/> TUBING REPAIR <input type="checkbox"/> WATER SHUTOFF <input type="checkbox"/> WILDCAT WELL DETERMINATION <input type="checkbox"/> ALTER CASING <input type="checkbox"/> CHANGE TUBING <input type="checkbox"/> COMMINGLE PRODUCING FORMATIONS <input type="checkbox"/> FRACTURE TREAT <input type="checkbox"/> PLUG AND ABANDON <input type="checkbox"/> RECLAMATION OF WELL SITE <input type="checkbox"/> SIDETRACK TO REPAIR WELL <input type="checkbox"/> VENT OR FLARE <input type="checkbox"/> SI TA STATUS EXTENSION <input type="checkbox"/> OTHER	
	<input type="checkbox"/> CASING REPAIR <input type="checkbox"/> CHANGE WELL NAME <input type="checkbox"/> CONVERT WELL TYPE <input type="checkbox"/> NEW CONSTRUCTION <input type="checkbox"/> PLUG BACK <input type="checkbox"/> RECOMPLETE DIFFERENT FORMATION <input type="checkbox"/> TEMPORARY ABANDON <input type="checkbox"/> WATER DISPOSAL <input checked="" type="checkbox"/> APD EXTENSION OTHER: <input style="width: 100px;" type="text"/>	
12. DESCRIBE PROPOSED OR COMPLETED OPERATIONS. Clearly show all pertinent details including dates, depths, volumes, etc.		
<p>Kerr-McGee Oil & Gas Onshore, L.P. (Kerr-McGee) respectfully requests an extension to this APD for the maximum time allowed. Please contact the undersigned with any questions and/or comments. Thank you.</p>		
		<p>Approved by the Utah Division of Oil, Gas and Mining</p> <p>Date: <u>08/22/2011</u></p> <p>By: <u></u></p>
NAME (PLEASE PRINT) Gina Becker	PHONE NUMBER 720 929-6086	TITLE Regulatory Analyst II
SIGNATURE N/A		DATE 8/19/2011



The Utah Division of Oil, Gas, and Mining

- State of Utah
- Department of Natural Resources

Electronic Permitting System - Sundry Notices

Request for Permit Extension Validation Well Number 43047500930000

API: 43047500930000

Well Name: NBU 1022-34F

Location: 1632 FNL 2266 FWL QTR SENW SEC 34 TWNP 100S RNG 220E MER S

Company Permit Issued to: KERR-MCGEE OIL & GAS ONSHORE, L.P.

Date Original Permit Issued: 9/15/2008

The undersigned as owner with legal rights to drill on the property as permitted above, hereby verifies that the information as submitted in the previously approved application to drill, remains valid and does not require revision. Following is a checklist of some items related to the application, which should be verified.

- If located on private land, has the ownership changed, if so, has the surface agreement been updated? Yes No

- Have any wells been drilled in the vicinity of the proposed well which would affect the spacing or siting requirements for this location? Yes No

- Has there been any unit or other agreements put in place that could affect the permitting or operation of this proposed well? Yes No

- Have there been any changes to the access route including ownership, or rightof- way, which could affect the proposed location? Yes No

- Has the approved source of water for drilling changed? Yes No

- Have there been any physical changes to the surface location or access route which will require a change in plans from what was discussed at the onsite evaluation? Yes No

- Is bonding still in place, which covers this proposed well? Yes No

Signature: Gina Becker

Date: 8/19/2011

Title: Regulatory Analyst II **Representing:** KERR-MCGEE OIL & GAS ONSHORE, L.P.

UNITED STATES
DEPARTMENT OF THE INTERIOR
BUREAU OF LAND MANAGEMENT

RECEIVED

NOV 22 2011

FORM APPROVED
OMB NO. 1004-0135
Expires: July 31, 2010

SUNDRY NOTICES AND REPORTS ON WELLS
Do not use this form for proposals to drill or to re-enter an abandoned well. Use form 3160-3 (APD) for such proposals.

BLM

SUBMIT IN TRIPLICATE - Other instructions on reverse side.

1. Type of Well <input type="checkbox"/> Oil Well <input checked="" type="checkbox"/> Gas Well <input type="checkbox"/> Other		5. Lease Serial No. UTU037166
2. Name of Operator KERR MCGEE OIL & GAS ONSHORE		6. If Indian, Allottee or Tribe Name
3a. Address 1368 SOUTH 1200 EAST VERNAL, UT 84078		7. If Unit or CA/Agreement, Name and/or No. UTU63047A
3b. Phone No. (include area code) Ph: 720-929-6156 Fx: 720-929-7156		8. Well Name and No. NBU 1022-34F
4. Location of Well (Footage, Sec., T., R., M., or Survey Description) Sec 34 T10S R22E SENW 1632FNL 2266FWL		9. API Well No. 43-047-50093-00-X1
		10. Field and Pool, or Exploratory NATURAL BUTTES
		11. County or Parish, and State UINTAH COUNTY, UT

12. CHECK APPROPRIATE BOX(ES) TO INDICATE NATURE OF NOTICE, REPORT, OR OTHER DATA

TYPE OF SUBMISSION	TYPE OF ACTION			
<input checked="" type="checkbox"/> Notice of Intent	<input type="checkbox"/> Acidize	<input type="checkbox"/> Deepen	<input type="checkbox"/> Production (Start/Resume)	<input type="checkbox"/> Water Shut-Off
<input type="checkbox"/> Subsequent Report	<input type="checkbox"/> Alter Casing	<input type="checkbox"/> Fracture Treat	<input type="checkbox"/> Reclamation	<input type="checkbox"/> Well Integrity
<input type="checkbox"/> Final Abandonment Notice	<input type="checkbox"/> Casing Repair	<input type="checkbox"/> New Construction	<input type="checkbox"/> Recomplete	<input checked="" type="checkbox"/> Other Change to Original PD
	<input type="checkbox"/> Change Plans	<input type="checkbox"/> Plug and Abandon	<input type="checkbox"/> Temporarily Abandon	
	<input type="checkbox"/> Convert to Injection	<input type="checkbox"/> Plug Back	<input type="checkbox"/> Water Disposal	

13. Describe Proposed or Completed Operation (clearly state all pertinent details, including estimated starting date of any proposed work and approximate duration thereof. If the proposal is to deepen directionally or recomplete horizontally, give subsurface locations and measured and true vertical depths of all pertinent markers and zones. Attach the Bond under which the work will be performed or provide the Bond No. on file with BLM/BIA. Required subsequent reports shall be filed within 30 days following completion of the involved operations. If the operation results in a multiple completion or recompletion in a new interval, a Form 3160-4 shall be filed once testing has been completed. Final Abandonment Notices shall be filed only after all requirements, including reclamation, have been completed, and the operator has determined that the site is ready for final inspection.)

Kerr-McGee Oil & Gas Onshore, L.P. (Kerr-McGee) respectfully requests an extension to this APD for the maximum time allowed. The original APD was approved on 12/03/2009.

Please contact the undersigned with any questions and/or comments. Thank you.

Thank you.

VERNAL FIELD OFFICE
ENG. *RH 12/16/11*
GEOL. _____
E.S. _____
PET. _____
RECL. _____

CONDITIONS OF APPROVAL ATTACHED

RECEIVED
JAN 18 2012
DIV. OF OIL, GAS & MINING

14. I hereby certify that the foregoing is true and correct. Electronic Submission #123851 verified by the BLM Well Information System For KERR MCGEE OIL & GAS ONSHORE L, sent to the Vernal Committed to AFMSS for processing by ROBIN R. HANSEN on 11/23/2011 (12RRH0808SE)	
Name (Printed/Typed) DANIELLE E PIERNOT	Title REGULATORY ANALYST II
Signature _____ (Electronic Submission)	Date 11/22/2011

THIS SPACE FOR FEDERAL OR STATE OFFICE USE

Approved By <i>[Signature]</i>	Title Assistant Field Manager Lands & Mineral Resources	Date DEC 20 2011
Conditions of approval, if any, are attached. Approval of this notice does not warrant or certify that the applicant holds legal or equitable title to those rights in the subject lease which would entitle the applicant to conduct operations thereon.	Office VERNAL FIELD OFFICE	

Title 18 U.S.C. Section 1001 and Title 43 U.S.C. Section 1212, make it a crime for any person knowingly and willfully to make to any department or agency of the United States any false, fictitious or fraudulent statements or representations as to any matter within its jurisdiction.

UDOGM

** BLM REVISED ** BLM REVISED ** BLM REVISED ** BLM REVISED ** BLM REVISED **

CONDITIONS OF APPROVAL

Kerr McGee Oil and Gas Onshore LP.

Notice of Intent APD Extension

Lease: UTU-037166
Well: NBU 1022-34F
Location: SENW Sec 34-T10S-R22E

An extension for the referenced APD is granted with the following conditions:

1. The extension and APD shall expire on 12/03/2013.
2. No other extension shall be granted.

If you have any other questions concerning this matter, please contact Robin L Hansen of this office at (435) 781-2777



GARY R. HERBERT
Governor
GREG BELL
Lieutenant Governor

State of Utah

DEPARTMENT OF NATURAL RESOURCES

MICHAEL R. STYLER
Executive Director

Division of Oil, Gas and Mining

JOHN R. BAZA
Division Director

March 13, 2012

Jenn Hawkins
Kerr McGee Oil & Gas Onshore, L.P.
1099 18th Street, Suite 1800
Denver, CO 80202

Re: APDs Rescinded for Kerr McGee Oil & Gas Onshore, L.P.
Uintah County

Dear Ms. Hawkins:

Enclosed find the list of APDs that you requested to be rescinded. No drilling activity at these locations has been reported to the division. Therefore, approval to drill these wells is hereby rescinded, effective March 7, 2012.

A new APD must be filed with this office for approval prior to the commencement of any future work on the subject location.

If any previously unreported operations have been performed on this well location, it is imperative that you notify the Division immediately.

Sincerely,

Diana Mason
Environmental Scientist

cc: Well File
Bureau of Land Management, Vernal
SITLA, Ed Bonner



API Number	Well Name
4304750274	NBU 727-35E
4304737762	FEDERAL 920-24G
4304750439	FEDERAL 1022-15L
4304750440	FEDERAL 1022-15K
4304750441	FEDERAL 1021-25I
4304750442	FEDERAL 1021-25M
4304750443	FEDERAL 1021-25N
4304738796	FEDERAL 1022-27K
4304738980	BITTER CREEK 1122-3N
4304737763	FEDERAL 920-24H
4304739156	NBU 1022-24O
4304736573	NBU 1022-23C
4304751040	NBU 920-22L4CS
4304751041	NBU 920-22M1BS
4304751042	NBU 920-22M4BS
4304751051	NBU 920-23L2DS
4304751052	NBU 920-23L4BS
4304738921	NBU 1022-8B-4T
4304739253	NBU 921-15L
4304738159	NBU 1022-20B
4304738169	NBU 1022-28I
4304750464	NBU 922-33N4S
4304750465	NBU 922-33O4S
4304750466	NBU 922-33P2S
4304750467	NBU 922-33P3S
4304738820	LOVE 1121-18B
4304740189	NBU 922-35IT
4304738491	NBU 1022-5H-4
4304750093	NBU 1022-34F
4304750094	NBU 1022-35M
4304750095	NBU 1022-34E
4304750097	FEDERAL 1022-27M
4304750067	NBU 921-16F3S
4304750068	NBU 921-16E4S
4304737103	FEDERAL 1022-29C
4304750127	NBU 420-29E
4304739527	NBU 1021-20F
4304739528	NBU 1021-20E
4304739530	NBU 1021-20B
4304738741	LOVE 1121-7P
4304738742	LOVE 1121-7L
4304738744	LOVE 1121-7F
4304738745	LOVE 1121-7D
4304738747	LOVE 1121-8P
4304738750	LOVE 1121-8F
4304738754	LOVE 1121-15L
4304738755	LOVE 1121-15N
4304739525	NBU 1021-20H
4304738795	NBU 1022-27O
4304738807	NBU 1022-34D
4304738920	NBU 1022-4E-3
4304737547	NBU 1022-17P
4304751050	NBU 920-23L1BS
4304737907	NBU 1021-3L
4304737908	NBU 1021-3D

4304737909	NBU 1021-3H
4304737917	NBU 1021-25E
4304737911	NBU 1021-24C
4304750029	NBU 375-13E
4304750033	NBU 515-25E
4304750034	NBU 673-25E
4304750035	NBU 674-25E
4304737963	NBU 1021-3G
4304737965	NBU 1021-5D
4304737684	NBU 498-13E