

STATE OF UTAH
DEPARTMENT OF NATURAL RESOURCES
DIVISION OF OIL, GAS, AND MINING

APPLICATION FOR PERMIT TO DRILL, DEEPEN, OR PLUG BACK

1a. Type of Work: DRILL DEEPEN PLUG BACK

b. Type of Well: Oil Well Gas Well Other Single Zone Multiple Zone

2. Name of Operator: Linmar Energy Corporation

3. Address of Operator: P.O. Box 1327, Roosevelt, Utah 84066

4. Location of Well: (Report location clearly and in accordance with any State requirements.)
At surface: 1531' FWL, 1536' FSL (NE1/4SW1/4)
At proposed prod. zone: Same

5. Lease Designation and Serial No.: 14-20-H62-

6. If Indian, Allottee or Tribe Name: Ute

7. Unit Agreement Name: N/A

8. Farm or Lease Name: Bley

9. Well No.: 2-25C7

10. Field and Pool, or Wildcat: Cedar Rim

11. Sec., T., R., M., or Bk. and Survey or Area: Sec. 25-T3S-R7W, USB&M

12. County or Parrish: Duchesne
13. State: Utah

14. Distance in miles and direction from nearest town or post office: 9.5 miles West of Duchesne, Utah

15. Distance from proposed location to nearest property or lease line, ft. (Also to nearest drlg. line, if any): 1531'

16. No. of acres in lease: 640

17. No. of acres assigned to this well: 640

18. Distance from proposed location to nearest well, drilling, completed, or applied for, on this lease, ft.: NONE

19. Proposed depth: 11,500 *Wanted*

20. Rotary or cable tools: Rotary

21. Elevations (Show whether DF, RT, GR, etc.): GROUND ELEV. 6620'

22. Approx. date work will start: January 25, 1985

PROPOSED CASING AND CEMENTING PROGRAM

Size of Hole	Size of Casing	Weight per Foot	Setting Depth	Quantity of Cement
30"	20"	Line pipe	60'+	Cement to surface
12.25"	9 5/8"	36.0 lbs	500-2000'	Cement to surface
8.75"	7.0"	29-32 lbs	8,600'	1,500 feet above shoe
6.0"	5.0"	18.0 lbs	11,500'	Cement full length

RECEIVED
JAN 14 1985

APPROVED BY THE STATE
DIVISION OF OIL, GAS & MINING
DATE: 3/7/85
BY: John R. Bueya
WELL SPACING: *Case # 140-15*

DIVISION OF OIL, GAS & MINING

IN ABOVE SPACE DESCRIBE PROPOSED PROGRAM: If proposal is to deepen or plug back, give data on present productive zone and proposed new productive zone. If proposal is to drill or deepen directionally, give pertinent data on subsurface locations and measured and true vertical depths. Give blowout preventer program, if any.

24. Signed: *[Signature]* Title: Land Agent Date: 1/11/85

(This space for Federal or State office use)

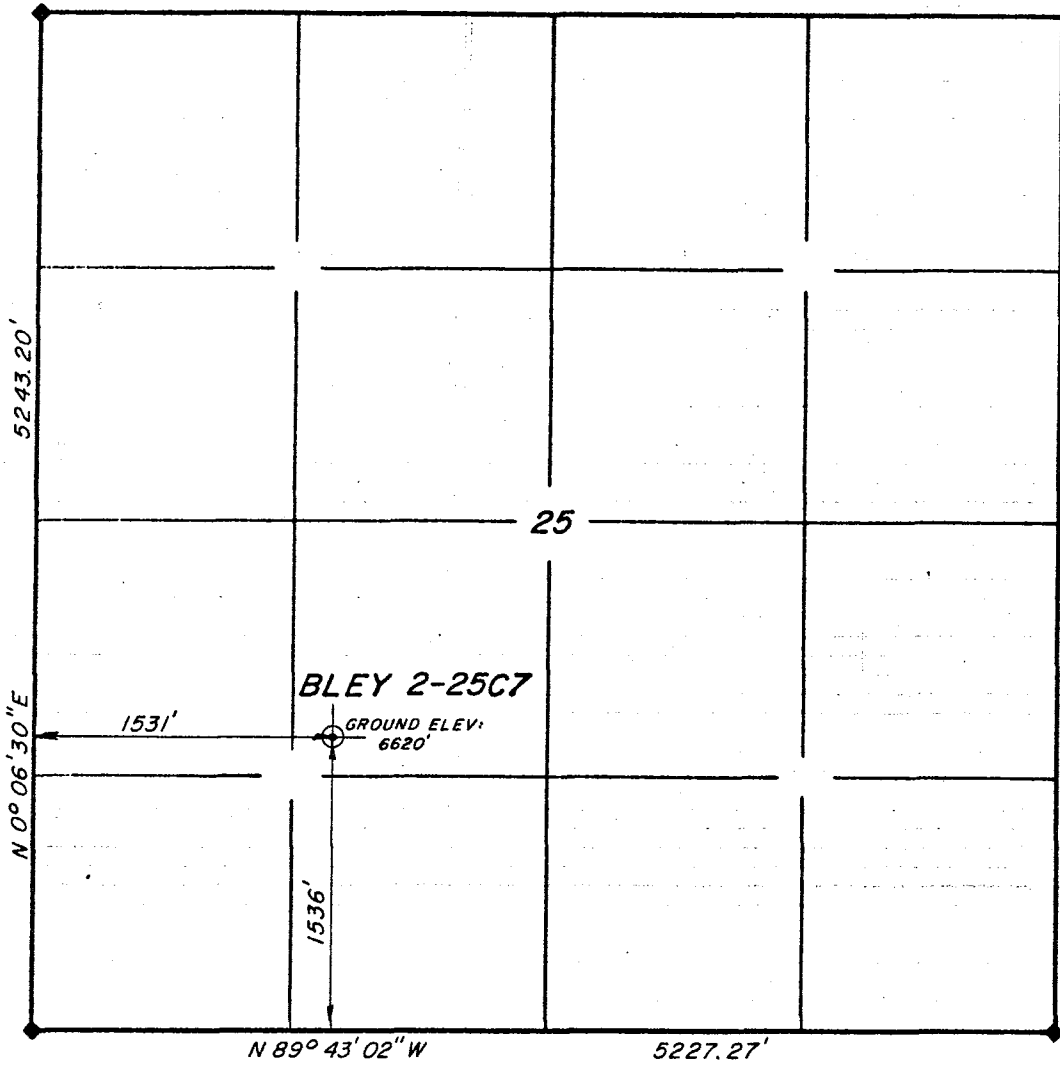
Permit No. _____ Approval Date _____

Approved by _____ Title _____ Date _____

Conditions of approval, if any:

**LINMAR ENERGY CORP.
WELL LOCATION PLAT
BLEY 2-25C7**

LOCATED THE NE $\frac{1}{4}$ OF THE SW $\frac{1}{4}$ OF
SECTION 25, T3S, R7W, U.S.B.&M.



SCALE: 1"=1000'

LEGEND & NOTES

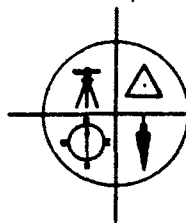
◆ CORNERS USED BY THIS SURVEY.

PLATS ON FILE IN THE DUCHESNE
COUNTY RECORDER'S OFFICE WERE USED
FOR REFERENCE AND CALCULATIONS.

SURVEYOR'S CERTIFICATE

I hereby certify that this plat was prepared
from field notes of an actual survey
performed by me, during which the shown
monuments were found or established.

Jerry D. Allred
Jerry D. Allred, Registered Land
Surveyor, Cert. No. 3817 (Utah)



JERRY D. ALLRED & ASSOCIATES
Surveying & Engineering Consultants

121 North Center Street
P.O. Drawer C
DUCHESNE, UTAH 84021
(801) 738-5352

CONDITIONS OF APPROVAL FOR NOTICE TO DRILL
WITHIN THE UINTAH URAY RESERVATION

Company: LINMAR ENERGY CORPORATION Well No: Eley 2-2507
Location: Section 25-T3S-R7W, USM Lease No: 14-20-H62-4307
Onsite Inspection Date: January 9, 1985

All lease and/or unit operations will be conducted in such a manner that full compliance is made with applicable laws, regulations, Onshore Oil and Gas Order No. 1, and the approved plan of operations. The operator is fully responsible for the actions of his subcontractors. A copy of these conditions will be furnished the field representative to insure compliance.

A. DRILLING PROGRAM

1. Surface Formation and Estimated Formation Tops:

Duchesne Rvr Fm.	Surface
Uintah Fm.	1,600'
Green River Fm.	4,100'
Wasatch Fm.	8,300'

2. Estimated Depth at Which Oil, Gas, Water, or Other Mineral Bearing Zones are Expected to be Encountered:

	<u>Formation</u>	<u>Zone</u>
Expected Oil Zones:	GR/Wasatch	6000-ID
Expected Gas Zones:	GR/Wasatch	6000-ID
Expected Water Zones:	Uintah	Surface to 1500'
Expected Mineral Zones:	<u>None Expected</u>	

All fresh water and prospectively valuable minerals (as described by BLM at onsite) encountered during drilling, will be recorded by depth and adequately protected. All oil and gas shows will be tested to determine commercial potential.

3. Pressure Control Equipment:

Minimum 3000 psi BOPE will be installed prior to drilling the surface pipe shoe. Minimum 5000 psi BOPE will be installed prior to drilling the Intermediate casing shoe. Pit Volume Totalizers, Flow sensors, Automated Choke Manifold, Gas Buster, Lower Kelly Cock, and stabbing valves will be available when drilling below 10,000'.

BOP systems will be consistent with API RP53. Pressure tests will be conducted before drilling out from under casing strings which have been set and cemented in place. Blowout preventer controls will be installed prior to drilling the surface casing plug and will remain in use until the well is completed or abandoned. Preventers will be inspected and operated at least daily to ensure good mechanical working order, and this inspection will be recorded on the daily drilling report. Preventers will be pressure tested before drilling casing cement plugs.

The District Office should be notified, with sufficient lead time, in order to have a BLM representative on location during pressure testing.

4. Casing Program and Auxillary Equipment:

A rat-hole driller will be used to drill a 30" conductor hole to a depth of between 60 and 80 feet. 20" pipe will then be ran and cemented to surface.

12-1/4" hole will be drilled to 500-2000', 9-5/8" casing ran and cemented to surface.

BOPE will be installed and tested. 8-3/4" hole will be drilled to 8000-9000 feet. 7" casing will be ran from surface to TD and a minimum of 1500' will be cemented.

BOPE will be installed and tested. 6" hole will be drilled to TD, 10500-11500". 5" liner will be run and cemented from the intermediate casing to TD.

Anticipated cement tops will be reported as to depth; not the expected number of sacks of cement to be used. The District Office should be notified, with sufficient lead time, in order to have a BLM representative on location while running all casing strings and cementing.

5. Mud Program and Circulating Medium:

The well will be drilled to the bottom of the surface pipe, using fresh water and fresh gel mud, with air as required to maintain circulation.

After setting the surface pipe, the well will be drilled to approximately 7000' using fresh water.

Fresh gel mud will then be utilized, weighted as necessary, with barite, for the remainder of the hole.

A minimum of 1000 sacks of barite will be maintained on location when drilling below 8000'.

No chromate additives will be used in the mud system on Federal and Indian lands without prior BLM approval to ensure adequate protection of fresh water aquifers.

6. Coring, Logging and Testing Program:

No DST's or Cores are planned.

DIL-GR log will be ran from the bottom of the surface pipe to TD.

CNL-FDC-GR and Mud logs will be ran from approximately 6000' to TD.

Whether the well is completed as a dry hole or as a producer, "Well Completion and Recompletion Report and Log" (Form 3160-4) will be submitted not later than 30 days after completion of the well or after completion of operations being performed, in accordance with 43 CFR 3164. Two copies of all logs, core descriptions, core analyses, well-test data, geologic summaries, sample description, and all other surveys or data obtained and compiled during the drilling, workover, and/or completion operations, will be filed with form 3160-4. Samples (cuttings, fluids, and/or gases) will be submitted when requested by the authorized officer (AO).

7. Abnormal Conditions, Bottom Hole Pressures and Potential Hazards:

The Duchesne River, Uintah and Upper Green River Fms. (to approximately 6000') are expected to be normal or under-pressured. Lost circulation may be a problem.

The Middle and Lower Wasatch Fm. is expected to be over-pressured. Mud weights of 9-11 ppg may be required to maintain pressure equilibrium. The estimated BHP at 10500' is 5500 psi. maximum, although the formation pressures of individual zones are expected to vary widely.

No other drilling hazards are anticipated.

8. Anticipated Starting Dates and Notifications of Operations:

Location Construction: January 25, 1985

Spud Date: February 1, 1985

No location will be constructed or moved, no well will be plugged, and no drilling or workover equipment will be removed from a well to be placed in a suspended status without prior approval of the AD. If operations are to be suspended, prior approval of the AD will be obtained and notification given before resumption of operations.

The spud date will be reported, orally, to the AD within 48 hours after spudding. If the spudding occurs on a weekend or holiday, the report will be submitted on the next following, regular work day. The oral report will be followed up with a Sundry Notice.

In accordance with Onshore Oil and Gas Order No. 1, this well will be reported on Form 9-329, "Monthly Report of Operations", starting with the month in which operations commence and continuing each month until the well is physically plugged and abandoned. This report will be filed, in triplicate, to the Vernal BLM District Office, 170 South 500 East, Vernal, Utah 84078.

Immediate Report: Spills, blowouts, fires, leaks, accidents, or any other unusual occurrences shall be promptly reported in accordance with the requirements of NTL-3A or its revisions.

(If a replacement rig is contemplated for completion operations, a "Sundry Notice" (Form 3160-5) to that effect will be filed, for prior approval of the AD, and all conditions of this approved plan are applicable during all operations conducted with the replacement rig.)

Upon completion of Drilling operations, the drilling rig will be released and rigged down. Completion operations will be performed, utilizing a completion rig.

Should the well be successfully completed for production, the AD will be notified when the well is placed in a producing status. Such notification will be sent by telegram or other written communication, not later than five days following the date on which the well is placed on production.

Pursuant to NTL-2B, with the approval of the District Engineer, produced water may be temporarily disposed of into unlined pits for a period of up to 90 days. During the period so authorized, an application for approval of the permanent disposal method, along with the required water analysis and other information, must be submitted to the District Engineer.

Pursuant to NTL-4A, lessees or operators are authorized to vent/flare gas during initial well evaluation tests, not exceeding a period of 30 days or the production of 50 MMCF of gas, whichever occurs first. An application must be filed with the District Engineer and approval received, for any venting/flaring of gas beyond the initial 30 day or authorized test period.

A schematic facilities diagram, as required by 43 CFR 3162.7-2, 3162.7-3, and 3162.7-4, shall be submitted to the appropriate District Office within 30 days of installation or first production, whichever occurs first. All site security regulations as specified in 43 CFR 3162.7 shall be adhered to. All product lines entering and leaving hydrocarbon storage tanks will be effectively sealed in accordance with 43 CFR 3162.7-4.

A first production conference will be scheduled, within 15 days after receipt of the first production notice.

No well abandonment operations will be commenced without the prior approval of the AO. In the case of newly drilled dry holes or failures, and in emergency situations, oral approval will be obtained from the AO. A "subsequent Report of Abandonment" Form 3160-5, will be filed with the AO within 30 days following completion of the well for abandonment. This report will indicate where plugs were placed and the current status of surface restoration. Final abandonment will not be approved until the surface reclamation work required by the approved APD or approved abandonment notice has been completed to the satisfaction of the AO or his representative, or the appropriate Surface Managing Agency.

Pursuant to Onshore Oil and Gas Order No. 1, lessees and operators have the responsibility to see that their exploration, development, production, and construction operations are conducted in a manner which conforms with applicable Federal Laws and regulations and with State and local laws and regulations to the extent that such State and local laws are applicable to operations on Federal or Indian lands.

B. THIRTEEN POINT SURFACE USE PLAN

1. Existing Roads:

- a. Location of proposed well in relation to town or other reference point: 12 miles West of Duchesne, Utah.
- b. Proposed route to location: From Duchesne, Utah, travel West, on U.S. 40, 11.5 miles, then Northwest .4 miles, then Northeast .2 miles, to the location.
- c. Location and description of roads in the area: All of the road except the last .8 miles is already in existence.
- d. Plans for improvement and/or maintenance of existing roads: Existing road is U.S. Highway 40 and oilfield access road. That which is not maintained by State of Utah, will be graded and maintained for all weather use. See attached topo map.
- e. Other: 0.8 miles of new road will be required on Fee surface.

2. Planned Access Roads:

- a. Width: 30' ROW to include 18' running surface road. Additional ROW will be needed for gas pipelines and power lines.
- b. Maximum Grade: 5%.
- c. Turnouts: Possibly one.
- d. Location (centerline): Beginning at a point located 1100' South and 2100' East of the NE corner of Section 36-T3S-R7W; proceeding Northwesterly, 0.8 miles to the location.
- e. Drainage: Roadway drainage will be provided in accordance with "Surface Operating Standards for Oil and Gas Exploration and Development". Culverts will be placed as required to maintain present drainage.
- f. Surface Materials (source): All roads will be built using native materials, capped, where necessary, with roadbase from commercial gravel pits in the area.

g. Other:

All travel will be confined to existing access road rights-of-way.

If the surface rights are owned by the Ute Indian Tribe and mineral rights are owned by another entity, an approved right-of-way will be obtained from the BIA before the operator begins any construction activities. If the surface is owned by another entity and the mineral rights are owned by the Ute Indian Tribe, rights-of-way will be obtained from the other entity.

3. Location of Existing Wells: See Attached Map.

4. Location of Tank Batteries and Production Facilities:

See Attached Well layout plat.

All permanent (on site for six months or longer) structures constructed or installed (including oil well pump jacks) will be painted a flat, non-reflective, earthtone color to match one of the standard environmental colors, as determined by the Rocky Mountain 5 State Interagency Committee. All facilities will be painted within 6 months of installation. Facilities required to conform with O.S.H.A. (Occupational Safety and Health Act) will be excluded.

If a tank battery is constructed on this lease, it will be surrounded by a dike of sufficient capacity to contain 1.5 times the storage capacity of the battery.

Tank batteries will be placed on the South side of the location, between points 2 and 8. Emergency Pit on Northeast side, between points 8 and 7. All loading lines will be placed inside the berm surrounding the tank battery.

All site security guidelines identified in 43 CFR 3162.7 regulations will be adhered to.

All off-lease storage, off-lease measurement, or commingling on-lease or off-lease will have prior written approval from the AO. Per existing gas contracts in the Greater Altamont-Bluebell Area, Gas will be metered at the wellsite and volumes will be adjusted to conform with the Plant Inlet Master Meter.

Gas meter runs for each well will be located within 500 feet of the wellhead. The gas flowline will be buried or anchored down, from the wellhead to the meter and 500 feet downstream of the meter run or any production facilities. Meter runs will be housed and/or fenced.

The oil and gas measurement facilities will be installed on the well location. The oil and gas meters must be calibrated in place prior to any deliveries. Tests for meter accuracy will be conducted monthly for the first three months for new meter installations and at least quarterly for other meter installations. The AD will be provided with a date and time for the initial meter calibration and all future meter proving schedules. A copy of the meter calibration reports will be submitted to the Vernal District Office. All meter measurement facilities will conform with the API standards for liquid hydrocarbons and the ADA standards for natural gas measurement.

5. Water and Construction Materials:

If fill materials are needed to construct roads and well sites, proper permits will be obtained. A copy of the permit needed to obtain water will be attached to the application if water is to be used for the drilling. Information for permits will include: (a) the approximate amount of water or materials needed, (b) location and ownership of the water rights or materials to be used and, (c) the approximate amount of time the water or materials will be required.

6. Methods of Handling Waste Disposal:

Storage tanks will be used if drill sites are located on tribal irrigable land or on lands under crop production. All reserve pits will be lined with clay and bentonite, at least 2 pounds per square foot.

Burning will not be allowed. All trash must be contained and disposed of by containment in a trash cage and disposal in an approved, sanitary landfill.

Produced waste water will be confined to a bentonite lined pit for a period not to exceed 90 days after initial production. During the 90 day period, an application for approval of a permanent disposal method and location, along with required water analysis, will be submitted for the AD's approval. Failure to file an application within the time allowed will be considered an incident of noncompliance and will be grounds for issuing a shut-in order.

7. Ancillary Facilities:

Camp facilities will not be required.

8. Wellsite Layout: The reserve pit will be located on the Northwest Side of the location, between points 4 and 5 of the Wellsite Layout Plat.

The stockpiled topsoil will be stored on the Northeast side of the location, between points 5 and 6 of the Wellsite Layout Plat.

Access to the well pad will be from the Southwest, near point 2 of the Wellsite Layout Plat.

The trash pit will be located: None allowed.

Reserve pits will be fenced with a wire mesh fence and topped with at least one strand of barbed wire. Fencing will be on three sides, while drilling, and the fourth side after releasing the drilling and completion rigs.

Operator's employees, including subcontractors, will not gather firewood along roads constructed by operators. If wood cutting is required, a permit will be obtained from the Forestry Department of the BIA pursuant to 25 CFR 169.13 "Assessed Damages Incident to Right-of-way Authorization". All operators, sub-contractors, vendors and their employees or agents may not disturb saleable timber (including firewood) without a duly granted wood permit from the BIA forester. Trees from the location will be cut and hauled off or bucked at the edge of the location, at the operators discretion.

9. Plans for Restoration of Surface:

Immediately upon completion of drilling, the location and surrounding area will be cleared of all debris, materials, trash and junk not required for production.

Before any dirtwork to restore the location takes place, the reserve pit must be completely dry and all cans, barrels, pipe, etc. will be removed.

All disturbed areas, not required for production operations, will be recontoured to the approximate natural contours.

The stockpiled topsoil will be evenly distributed over the disturbed areas.

Prior to reseeding, all disturbed areas, including the access roads, will be scarified and left with a rough surface.

Seed will be broadcast or drilled at a time specified by the Fee Surface Owner. If broadcast, a harrow or some other implement will be dragged over the seeded area to assure seed coverage.

The seed mixture to be used will be specified by the Fee Surface Owner, at the time of restoration.

The reserve pit and that portion of the location and access road not needed for production or production facilities will be reclaimed.

Abandoned well sites, roads, or other disturbed areas will be restored to near their original condition. This procedure will include: (a) reestablishing irrigation systems where applicable, (b) reestablishing soil conditions in irrigated fields in such a way as to insure cultivation and harvesting of crops and, (c) insuring revegetation of the disturbed areas to the specification of Fee Surface Owner at the time of abandonment.

The operator will submit a plan for controlling noxious weeds along rights-of-way for roads, pipelines, well sites or other applicable facilities. A list of noxious weeds can be obtained from the appropriate county extension office.

10. Surface and Mineral Ownership: The surface is owned by Marsh Bley, 17310 Sunset Blvd., Pacific Palisades, CA 90272, and minerals are owned by the Ute Indian Tribe.

11. Other Information:

Usable wood will be cut and hauled off. The stubble will be worked into the top soil.

While drilling, the reserve pit will be fenced on three sides. When the completion rig moves off, the fourth side will be fenced.

There will be no deviation from the proposed drilling and/or workover program without prior approval from the AO. Safe drilling and operating practices must be observed. All wells, whether drilling, producing, suspended, or abandoned will be identified in accordance with 43 CFR 3162.2.

"Sundry Notice and Report on Wells" (Form 3160-5) will be filed for approval for all changes of plans and other operations in accordance with 43 CFR 3164.

The dirt contractor will be provided with an approved copy of the surface use plan.

A cultural resource clearance will not be required before any construction begins. If any cultural resources are found during construction, all work will stop and the AO will be notified.

This permit will be valid for a period of one year from the date of approval. After permit termination, a new application will be filed for approval for any future operations.

12. Lessee's or Operator's Representative and Certification:

Operator's employees, including subcontractors, will not carry fire-arms or other weapons that may be used to kill game animals.

Operator's employees, including subcontractors, will be confined to established roads and well sites. The purpose of this is to prevent soil erosion, and to prevent harassment of game animals or livestock with off-road vehicles such as snowmobiles, motorcycles, or 4-wheel drives.

[All roads constructed by operators on the Uintah and Ouray Indian Reservation will have appropriate signs. Signs will be neat and of sound construction. They will state: (a) that the land is owned by the Ute Indian Tribe, (b) the name of the operator, (c) that firearms are prohibited to all non-Ute Tribal members, (d) that permits must be obtained from the BIA before cutting firewood or other timber products and (e) only authorized personnel are permitted on location.]

A bench mark will be established near each well site at a location where it will not be destroyed. The bench mark will be a brass cap set in concrete. The brass cap will show the well number and elevation to the nearest one-tenth of a foot. The cuts and fills diagram for the well site will show elevations in relation to the bench mark.

Representative:

E. B. Whicker
333 East 200 North
P.O. Box 1327
Roosevelt, Utah 84066

(801)722-4546

13. Certification:

I hereby certify that I, or persons under my direct supervision, have inspected the proposed drillsite and access route, that I am familiar with the conditions which currently exist, that the statements made in this plan are true and correct to the best of my knowledge; and, that the work associated with the operations proposed herein will be performed by LINMAR ENERGY CORPORATION and its contractors and subcontractors in conformity with this plan and the terms and conditions under which it is approved. This statement is subject to the provisions of 18 U.S.C. 1001 for the filing of a false statement.

1-11-85

Date

E. B. Whicker

E. B. Whicker

Manager of Engineering

ON-SITE:

DATE: January 9, 1985

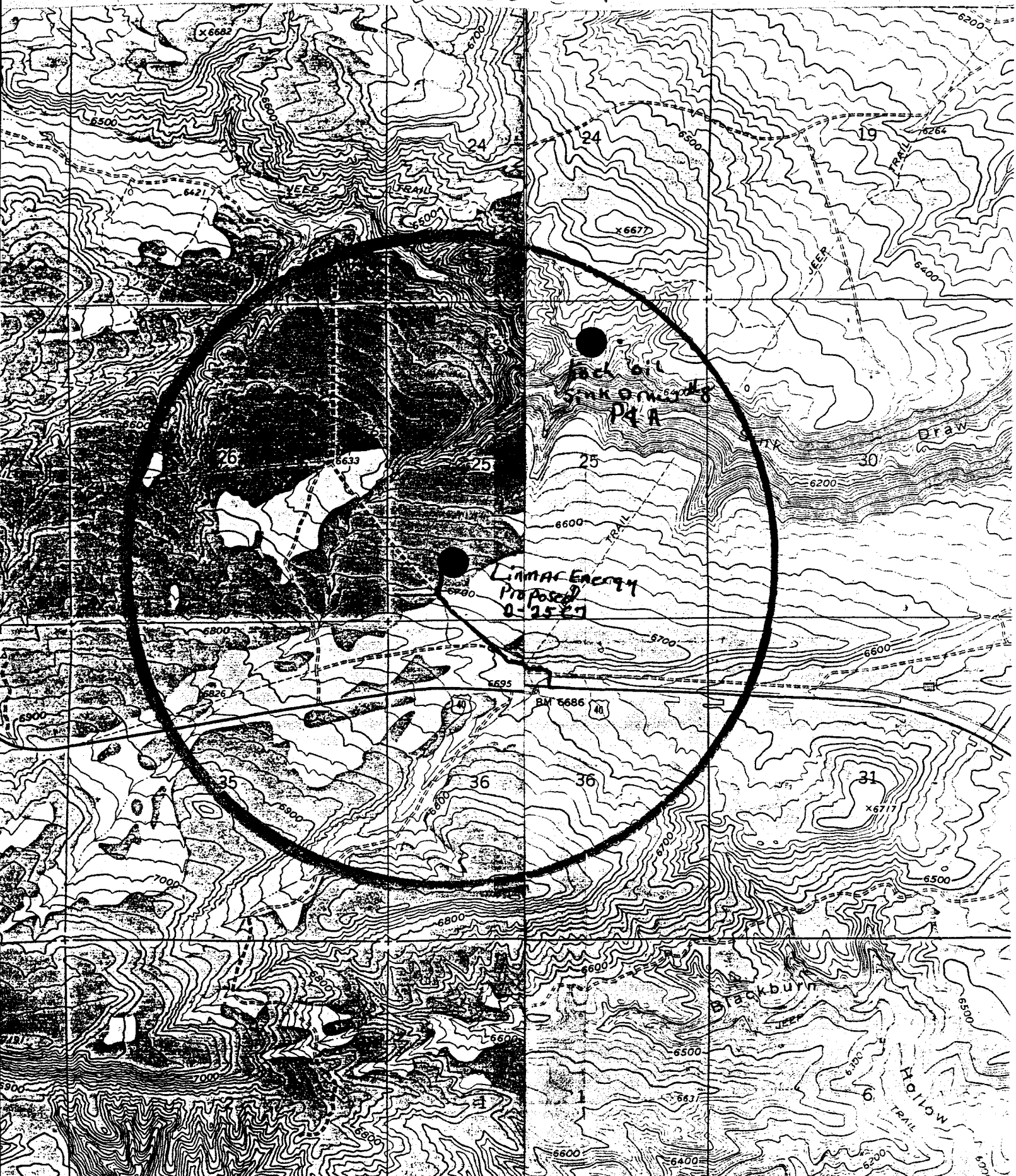
PARTICIPANTS:

TITLE:

Amy Hauslein
Jerry Allred
Kay Seeley
John Fausett
Evan Gentile

Environmental Scientist, BLM
Registered Land Surveyor
Surveyor
Dirt Contractor
Land Agent for Linmar Energy Corp.

2-2507





United States Department of the Interior

BUREAU OF INDIAN AFFAIRS

UINTAH AND OURAY AGENCY

Fort Duchesne, Utah 84026

(801) 722-2406 Ext. 33, 34

IN REPLY REFER TO:

Real Property Management
Ten. and Mgmt.

JAN 14 1985

MEMORANDUM

TO: District Manager, Bureau of Land Management

Acting

FROM: Superintendent, Uintah and Ouray Agency

SUBJECT: Linmar Energy Corp., Well Bley 2-25C7
in the NE $\frac{1}{4}$ SW $\frac{1}{4}$, Sec. 25, T. 3 S., R. 7 W., Uinta meridian, Utah.

We (concur with or, recommend) approval of the Application for Permit to Drill subject well.

Based on available information on 1-14-85, we have cleared the proposed location in the following areas of environmental impact.

YES <input type="checkbox"/>	NO <input checked="" type="checkbox"/>	Listed threatened or endangered species.
YES <input type="checkbox"/>	NO <input checked="" type="checkbox"/>	Critical wildlife habitat.
YES <input type="checkbox"/>	NO <input checked="" type="checkbox"/>	Archaeological or cultural resources.
YES <input type="checkbox"/>	NO <input type="checkbox"/>	Air quality aspects (to be used only if project is in or adjacent to a Class I area of attainment)
YES <input type="checkbox"/>	NO <input type="checkbox"/>	Other (if necessary)

REMARKS: Fee Surface, BIA has no surface jurisdiction.

The necessary surface protection and rehabilitation requirements are as per approved APD.

Regu J. Coonrod



STATE OF UTAH
NATURAL RESOURCES
Water Rights

Scott M. Matheson, Governor
Temple A. Reynolds, Executive Director
Dee C. Hansen, State Engineer

23 East Main Street • P.O. Box 879 • Vernal, UT 84078 • 801-789-3714

February 5, 1985

RECEIVED

FEB 11 1985

DIVISION OF OIL
GAS & MINING

Linmar Energy Corporation
P. O. Box 1327
Roosevelt, Utah 84066

RE: Temporary Change 85-43-20

Gentlemen:

The above numbered Temporary Change Application has been approved, subject to prior rights.

A copy is herewith returned to you for your records and future reference.

Sincerely yours,

A handwritten signature in cursive script that reads "Robert J. Guy".

for Dee C. Hansen, P. E.
State Engineer

DCH:RFG/ln

Enclosure

cc: Oil, Gas & Mining

APPLICATION TO RENT WATER
Central Utah Water Conservancy District
(Submit in Duplicate)

1. This agreement made this 29th day of January 1985 between the Central Utah Water Conservancy District, herein called the District and Linmar Energy Corporation called the renter for the rent of untreated project water from the Bonneville Unit of the Central Utah Project, for use in the drilling operations of ~~one~~ two oil well. (Well Name) McFarlane 1-4D6, Peterson 1-5D6.

Sections 4,5 T4S, R6W, USM

2. The renter agrees to pay upon execution hereof the sum of \$ 2,000.00 (one thousand per well)

3. District agrees to permit the diversion of water directly or by exchange from starvation Reservoir at the following location: 2,000' North and 1,500' West of the NE corner of Section 36, T3S, R6W, USM

4. Renter has the responsibility at its sole cost and expense of providing the means of taking the water at the point of delivery and transporting it to the place of use. Renter assumes full responsibility for any and all damages and injuries which may arise from its taking and use of the water.

5. This agreement will be administered by a representative of the District. The renter agrees to comply with all conditions and instructions given by said representative. The Renter agrees to comply with all Federal, State and Local statutes and regulations relating to pollution of streams, water courses, ground water sources, and reservoirs.

6. The water must be taken during the period from January 29, 19 85 to January 28, 1986.

Renter

Central Utah Water Conservancy District



Address

By



Leo L. Brady

Linmar Energy Corporation
P.O. Box 1327

Roosevelt, Utah 84066

Evan Gentile, Land Agent

031808

APPLICATION NO. 85-43-90
DISTRIBUTION SYSTEM

Application For Temporary Change of Point of Diversion,
Place or Purpose of Use

RECEIVED

STATE OF UTAH

FEB 11 1985

(To Be Filed in Duplicate)

DIVISION OF OIL
GAS & MINING

N9520

Roosevelt, Utah January 29, 1985
Place Date

For the purpose of obtaining permission to temporarily change the point of diversion, place or purpose of use of water, the right to the use of which was acquired by Bureau of Reclamation, Application #36638 (Strike out written matter not needed) (Give No. of application, title and date of Decree and Award No.) to that hereinafter described, application is hereby made to the State Engineer, based upon the following showing of facts, submitted in accordance with the requirements of the Laws of Utah.

- 1. The owner of right or application is Central Utah Water Conservancy District
2. The name of the person making this application is Evan Gentile, for Linmar Energy Corporation
3. The post office address of the applicant is P.O. Box 1327, Roosevelt, Utah 84066

PAST USE OF WATER

- 4. The flow of water which has been used in second feet is 200,000 acre feet
5. The quantity of water which has been used in acre feet is
6. The water has been used each year from to incl.
7. The water has been stored each year from January 1 to December 31 incl.
8. The direct source of supply is Strawberry River in Duchesne County.
9. The water has been diverted into ditch canal at a point located S. 2754' E. 457' from the NE Corner of Section 28, T3S, R5W, USM.
10. The water involved has been used for the following purpose: Irrigation

NOTE: If for irrigation, give legal subdivisions of land and total acreage which has been irrigated. If for other purposes, give place and purpose of use.

THE FOLLOWING TEMPORARY CHANGES ARE PROPOSED

- 11. The flow of water to be changed in cubic feet per second is
12. The quantity of water to be changed in acre-feet is 50.0 ac.-ft.
13. The water will be diverted into the Water Trucks ditch canal at a point located North 2,000' and West 1,500' from the Northeast Corner of Section 36, T3S, R6W, USM
14. The change will be made from January 29, 1985, to January 28, 1986
15. The reasons for the change are Water has been purchased from Central Utah Water Conservancy District to drill the McFarlane 1-4D6, Peterson 1-5D6, Ford 2-13C7, Biddle 6-18C6, and the Bley 2-25C7
16. The water involved herein has heretofore been temporarily changed years prior to this application.

NOTE: If for irrigation, give legal subdivisions of land to be irrigated. If for other purposes, give place and purpose of proposed use.

EXPLANATORY
43-013-31074 POW/WSTC Sec. 4, T4S, R6W, 2.) Sec. 5, T4S, R6W, 3.) Sec. 13, T3SR7W, 4.) Sec. 18, T3SR6W, 5.) Sec. 25, T3S, R7W) 43-013-31075 POW/WSTC 43-013-31082 POW/WSTC 43-013-31081 PA
MCFARLANE 1-4D6 FORD 2-13C7 BIDDLE 6-18C6
43-013-31083-POW BLEY 2-25C7

A filing fee in the sum of \$7.50 is submitted herewith. I agree to pay an additional fee for either investigating or advertising this change, or both, upon the request of the State Engineer.

Leo L. Brady Central Utah Water Conservancy District

Signature of Applicant Linmar Energy Corporation, Evan Gentile

RULES AND REGULATIONS

(Read Carefully)

This application blank is to be used only for temporary change of point of diversion, place or nature of use for a definitely fixed period not to exceed one year. If a permanent change is desired, request proper application blanks from the State Engineer.

Application for temporary change must be filed in duplicate, accompanied by a filing fee of \$5.00. Where the water affected is under supervision of a Water Commissioner, appointed by the State Engineer, time will be saved if the Application is filed with the Commissioner, who will promptly investigate the proposed change and forward both copies with filing fee and his report to the State Engineer. Applications filed directly with the State Engineer will be mailed to the Water Commissioner for investigation and report. If there be no Water Commissioner on the source, the Application must be filed with the State Engineer.

When the State Engineer finds that the change will not impair the rights of others he will authorize the change to be made. If he shall find, either by his own investigation or otherwise, that the change sought might impair existing rights he shall give notice to persons whose rights might be affected and shall give them opportunity to be heard before acting upon the Application. Such notice shall be given five days before the hearing either by regular mail or by one publication in a newspaper. Before making an investigation or giving notice the State Engineer will require the applicant to deposit a sum of money sufficient to pay the expenses thereof.

Address all communications to:

State Engineer
State Capitol Building
Salt Lake City, Utah

STATE ENGINEER'S ENDORSEMENTS

(Not to be filled in by applicant)

Change Application No. (River System)

1. Application received by Water Commissioner (Name of Commissioner)

2. 11/31/85 Recommendation of Commissioner
Application received over counter by mail in State Engineer's Office by R. J.

3. Fee for filing application, \$7.50, received by ; Rec. No.

4. Application returned, with letter, to , for correction.

5. Corrected application resubmitted over counter by mail to State Engineer's Office.

6. Fee for investigation requested \$

7. Fee for investigation \$, received by : Rec. No.

8. Investigation made by ; Recommendations:

9. Fee for giving notice requested \$

10. Fee for giving notice \$, received by : Rec. No.

11. Application approved for advertising by publication mail by

12. Notice published in

13. Notice of pending change application mailed to interested parties by as follows:

14. Change application protested by (Date Received and Name)

15. Hearing set for , at

16. 2/15/85 Application recommended for rejection approval by RFG

17. 2/15/85 Change Application rejected approved and returned to

THIS APPLICATION IS APPROVED SUBJECT TO THE FOLLOWING CONDITIONS:

- 1.
2.
3.

Robert G. Gray
State Engineer

STATE OF UTAH
DEPARTMENT OF NATURAL RESOURCES
DIVISION OF OIL, GAS, AND MINING

5. Lease Designation and Serial No.

14-20-H62-4307

APPLICATION FOR PERMIT TO DRILL, DEEPEN, OR PLUG BACK

6. If Indian, Allottee or Tribe Name

Ute

1a. Type of Work

DRILL

DEEPEN

PLUG BACK

7. Unit Agreement Name

N/A

8. Type of Well

Oil
Well

Gas Well

Other

Single Zone

Multiple Zone

8. Farm or Lease Name

Bley

9. Name of Operator

Linmar Energy Corporation

RECEIVED

9. Well No.

2-25C7

10. Address of Operator

P.O. Box 1327, Roosevelt, Utah 84066

MAR 20 1985

10. Field and Pool, or Willcut

Cedar Rim

11. Location of Well (Report location clearly and in accordance with any State requirements.)
At surface

1531' FWL, 1536' FSL (NE1/4SW1/4)

11. Sec., T., R., M., or Bk. and Survey or Area

At proposed prod. zone

Same

DIVISION OF OIL
GAS & MINING

Sec. 25-T3S-R7W, USB&M

12. Distance in miles and direction from nearest town or post office*

9.5 miles West of Duchesne, Utah

12. County or Parrish

Duchesne

Utah

13. Distance from proposed location to nearest property or lease line, ft. (Also to nearest drlg. line, if any)

1531'

16. No. of acres in lease

640

17. No. of acres assigned to this well

640

18. Distance from proposed location* to nearest well, drilling, completed, or applied for, on this lease, ft.

NONE

19. Proposed depth

11,500

20. Rotary or cable tools

Rotary

21. Elevations (Show whether DF, RT, GR, etc.)

GROUND ELEV. 6620'

22. Approx. date work will start*

January 25, 1985

23. PROPOSED CASING AND CEMENTING PROGRAM

Size of Hole	Size of Casing	Weight per Foot	Setting Depth	Quantity of Cement
30"	20"	Line pipe	60'+	Cement to surface
12.25"	9 5/8"	36.0 lbs	500-2000'	Cement to surface
8.75"	7.0"	29-32 lbs	8,600'	1,500 feet above shoe
6.0"	5.0"	18.0 lbs	11,500	Cement full length



IN ABOVE SPACE DESCRIBE PROPOSED PROGRAM: If proposal is to deepen or plug back, give data on present productive zone and proposed new productive zone. If proposal is to drill or deepen directionally, give pertinent data on subsurface locations and measured and true vertical depths. Give blowout preventer program, if any.

24. Signed: *Edmund B. Smith*

Title: Land Agent

Date: 1/11/85

(This space for Federal or State office use)

Permit No.

Approval Date

Approved by: *L. Ferguson*

Title: DISTRICT MANAGER

Date: 3/19/85

Conditions of approval, if any:

CONDITIONS OF APPROVAL ATTACHED TO OPERATOR'S COPY

71080-5M-102
NOTICE OF APPROVAL

*See Instructions On Reverse Side

CONDITIONS OF APPROVAL FOR NOTICE TO DRILL
WITHIN THE UINTAH OURAY RESERVATION

Company Linmar Energy Corp. Well No. 2-2507
Location Sec. 25 T3S R7W Lease No. 14-20-H62-4307
Onsite Inspection Date 1-9-85

A. DRILLING PROGRAM

1. Pressure Control Equipment

Choke manifold system will be consistent with API RP 53.

2. Drilling & Completion Reports

Daily drilling and completion progress reports shall be submitted to this office on a weekly basis.

OPERATOR Lenmar DATE 1-14-85

WELL NAME Bley # 2-25C7

SEC NE SW 25 T 35 R 7W COUNTY Richmond

43-013-31083
API NUMBER

Indian
TYPE OF LEASE

CHECK OFF:

PLAT

BOND

NEAREST WELL

LEASE

FIELD

POTASH OR OIL SHALE

PROCESSING COMMENTS:

Board Order - Cause No 140-15
Need water permit

APPROVAL LETTER:

SPACING:

A-3

UNIT

c-3-a

~~440-6~~ 140-15 2/28/85
CAUSE NO. & DATE

c-3-b

c-3-c

STIPULATIONS:

1-water



STATE OF UTAH
NATURAL RESOURCES
Oil, Gas & Mining

Norman H. Bangerter, Governor
Dee C. Hansen, Executive Director
Dianne R. Nielson, Ph.D., Division Director

355 W. North Temple • 3 Triad Center • Suite 350 • Salt Lake City, UT 84180-1203 • 801-538-5340

March 7, 1985

Linmar Energy Corporation
P. O. Box 1327
Roosevelt, Utah 84066

Gentlemen:

Re: Well No. Bley #2-25C7 - NE SW Sec. 25, T. 3S, R. 7W
1536' FSL, 1531' FWL - Duchesne County, Utah

Approval to drill the above referenced oil well is hereby granted in accordance with Order of Cause No. 140-15 dated February 28, 1985 subject to the following stipulations:

1. Prior to commencement of drilling, receipt by the Division of evidence providing assurance of an adequate and approved supply of water.

In addition, the following actions are necessary to fully comply with this approval:


1. Spudding notification to the Division within 24 hours after drilling operations commence.
2. Submittal to the Division of completed Form OGC-8-X, Report of Water Encountered During Drilling.
3. Prompt notification to the Division should you determine that it is necessary to plug and abandon this well. Notify John R. Baza, Petroleum Engineer, (Office) (801) 538-5340, (Home) 298-7695 or R. J. Firth, Associate Director, (Home) 571-6068.
4. Compliance with the requirements and regulations of Rule C-27, Associated Gas Flaring, General Rules and Regulations, Oil and Gas Conservation.

Page 2
Linmar Energy Corporation
Well No. Bley #2-25C7
March 7, 1985

5. This approval shall expire one (1) year after date of issuance unless substantial and continuous operation is underway or an application for an extension is made prior to the approval expiration date.

The API number assigned to this well is 43-013-31083.

Sincerely,



R. J. Firth
Associate Director, Oil & Gas

as
Enclosures
cc: Branch of Fluid Minerals
Bureau of Indian Affairs

DIVISION OF OIL, GAS AND MINING

SPUDDING INFORMATION

API #43-013-31083

NAME OF COMPANY: LINMAR ENERGY

WELL NAME: BLEY #2-25C7

SECTION NE SW 25 TOWNSHIP 3S RANGE 7W COUNTY Duchesne

DRILLING CONTRACTOR Caliber

RIG # 4

SPUDDED: DATE 3-21-85

TIME 5:00 AM

HOW Rotary

DRILLING WILL COMMENCE _____

REPORTED BY Demsey Day

TELEPHONE # _____

DATE 3-31-85 SIGNED R.J.F.

STATE OF UTAH
DEPARTMENT OF NATURAL RESOURCES
DIVISION OF OIL, GAS, AND MINING

PRINT IN TRIPLICATE*
(Other instructions on reverse side)

5. LEASE DESIGNATION AND SERIAL NO.

14-20-H62- 4307

6. IF INDIAN, ALLOTTEE OR TRIBE NAME

Ute

7. UNIT AGREEMENT NAME

N/A

8. FARM OR LEASE NAME

Bley

9. WELL NO.

2-25C7

10. FIELD AND POOL, OR WILDCAT

Cedar Rim

11. SEC., T., R., M., OR BLK. AND SUBVY OR AREA

Sec. 25, T3S, R7W, USM

12. COUNTY OR PARISH 13. STATE

Duchesne

Utah

SUNDRY NOTICES AND REPORTS ON WELLS

(Do not use this form for proposals to drill or to deepen or plug back to a different reservoir. Use "APPLICATION FOR PERMIT—" for such proposals.)

1.

OIL WELL GAS WELL OTHER

2. NAME OF OPERATOR

LINMAR ENERGY CORPORATION

3. ADDRESS OF OPERATOR

7979 E. Tufts Ave., Pkwy., Ste. 604, Denver, CO 80237

4. LOCATION OF WELL (Report location clearly and in accordance with any State requirements. See also space 17 below.)

At surface 1531'FWL, 1536' FSL (NESW)

14. PERMIT NO.

43-013-31083

15. ELEVATIONS (Show whether OF, RT, GR, etc.)

6620' Ground Elev.

16.

Check Appropriate Box To Indicate Nature of Notice, Report, or Other Data

NOTICE OF INTENTION TO:

TEST WATER SHUT-OFF

FRACTURE TREAT

SHOOT OR ACIDIZE

REPAIR WELL

(Other)

PULL OR ALTER CASING

MULTIPLE COMPLETE

ABANDON*

CHANGE PLANS

SUBSEQUENT REPORT OF:

WATER SHUT-OFF

FRACTURE TREATMENT

SHOOTING OR ACIDIZING

(Other)

REPAIRING WELL

ALTERING CASING

ABANDONMENT*

(NOTE: Report results of multiple completion on Well Completion or Recompletion Report and Log form.)

17. DESCRIBE PROPOSED OR COMPLETED OPERATIONS (Clearly state all pertinent details, and give pertinent dates, including estimated date of starting any proposed work. If well is directionally drilled, give subsurface locations and measured and true vertical depths for all markers and zones pertinent to this work.)

3-31-85 Drilling to 90'. Spud at 5:00 am 3-31-85.

RECEIVED

MAY 13 1985

DIVISION OF OIL
GAS & MINING

(SEE ATTACHMENT FOR DETAILS.)

18. I hereby certify that the foregoing is true and correct

SIGNED

Stephanie M. Farland
Stephanie McFarland

TITLE

Production Clerk

DATE

5-9-85

(This space for Federal or State office use)

APPROVED BY

TITLE

DATE

CONDITIONS OF APPROVAL, IF ANY:

WELL: LINMAR-BLEY 2-25C7
LOCATION: SEC. 25, T3S, R7W, DUCHESNE COUNTY, UTAH
OPERATOR: LINMAR ENERGY CORPORATION
CONTRACTOR: CALIBER DRILLING, RIG #44
OBJECTIVE ZONE: WASATCH FORMATION
ESTIMATED TD: 10,500'

PAGE 1

3-29-85	40'	Remarks: Moving in and rigging up with black hills trucking. Drilling crews snowed out at 4:30 pm. DC: \$68,550	CUM: \$68,550
3-30-85	40'	Remarks: Rigging up with black hills trucking. Waiting on day light. DC: \$1,350	CUM: \$69,900
3-31-85	90'	Day 3; Drilling, made 50' in 1 hr. MW 8.6, Vis 33, Remarks: Rigging up and picking up rotary tools. Pickup and make up BHA. Drilling 12 1/4" hole. Spudded at 5:00 am 3-31-85. Activity at 6:00 drilling 12 1/4" surface hole. DC: \$5,415	CUM: \$75,315
4-1-85	450'	Day 4; Drilling, made 360' in 21 3/4 hrs. MW 8.6, Vis 35, Remarks: Drilling from 90' to 450'. Surveys. Rig service. Rig repair compound clutch release. Trip for bit at 145'. Drilling ahead. 12 1/4" hole. Lost no drilling fluid at this depth. DC: \$10,210	CUM: \$85,525
4-2-85	910'	Day 5; Drilling, made 460' in 18 hrs. MW 8.6, Vis 35. Remarks: Tripping for new bits. Surveys. Rig service, Circulate bottoms up for trips. Drilling from 450' to 910'. Lost approx 300 barrels of drilling fluid in last 24 hours. Now drilling ahead. Survey 3° at 577'. 3° at 722'. DC: \$14,235 DMC: \$ 600	CUM: \$99,760 CMC: \$ 600
4-3-85	1,320'	Day 6; Drilling, made 410' in 18 3/4 hrs. MW 8.6, Vis 34, Cake 2, PH 10.5. Remarks: Drill, repair chain between #1 and #2 motors, rig service, repair pedestal on compound splitter clutch, drill to 1114', circulate and pull out of hole for new bit, go in hole, wash and ream tight spot at 1094'. and 15' of fill, repair air leak on compressor line, drilling at 1320'. DC: \$13,150 DMC: \$ 425	CUM: \$99,760 CMC: \$ 1,125
4-4-85	1,622'	Day 7; Drilling, made 302' in 10 hrs. MW 8.9, Vis 40, WL 12.8, Cake 2, PH 9. Remarks: Drill, rig service, drill to 1530, survey, went off 7 degree chart drill 30' run another survey out 10 degree, drill to 1622 with 30K and 90-100 rpm, drop survey and pull out of hole for stabilization, survey out 10 deg, pick up IBS and go in hole to 138', wash and ream to bottom, Wash and ream at 1126. Survey 8° at 1530. 10° at 1560. 10° at 1622'. DC: \$14,404 DMC: \$ 5,102	CUM: \$127,314 CMC: \$ 6,227

STATE OF UTAH
DEPARTMENT OF NATURAL RESOURCES
DIVISION OF OIL, GAS, AND MINING

PRINT IN TRIPLICATE*
(Other instructions on reverse side)

SUNDRY NOTICES AND REPORTS ON WELLS

(Do not use this form for proposals to drill or to deepen or plug back to a different reservoir. Use "APPLICATION FOR PERMIT—" for such proposals.)

1. OIL WELL <input checked="" type="checkbox"/> GAS WELL <input type="checkbox"/> OTHER <input type="checkbox"/>		5. LEASE DESIGNATION AND SERIAL NO. 14-20-H62- 4307
2. NAME OF OPERATOR LINMAR ENERGY CORPORATION		6. IF INDIAN, ALLOTTEE OR TRIBE NAME Ute
3. ADDRESS OF OPERATOR 7979 E. Tufts Ave., Pkwy., Ste. 604, Denver, CO 80237		7. UNIT AGREEMENT NAME N/A
4. LOCATION OF WELL (Report location clearly and in accordance with any State requirements.* See also space 17 below.) At surface 1531'FWL, 1536' FSL (NESW)		8. FARM OR LEASE NAME Bley
14. PERMIT NO. 43-013-31083	15. ELEVATIONS (Show whether OF, RT, GR, etc.) 6620' Ground Elev.	9. WELL NO. 2-25C7
		10. FIELD AND POOL, OR WILDCAT Cedar Rim
		11. SEC., T., R., M., OR BLK. AND SURVEY OR AREA Sec. 25, T3S, R7W, USM
		12. COUNTY OR PARISH Duchesne
		13. STATE Utah

16. Check Appropriate Box To Indicate Nature of Notice, Report, or Other Data

NOTICE OF INTENTION TO:

SUBSEQUENT REPORT OF:

TEST WATER SHUT-OFF <input type="checkbox"/>	PULL OR ALTER CASING <input type="checkbox"/>
FRACTURE TREAT <input type="checkbox"/>	MULTIPLE COMPLETE <input type="checkbox"/>
SHOOT OR ACIDIZE <input type="checkbox"/>	ABANDON* <input type="checkbox"/>
REPAIR WELL <input type="checkbox"/>	CHANGE PLANS <input type="checkbox"/>
(Other) <input type="checkbox"/>	<input type="checkbox"/>

WATER SHUT-OFF <input type="checkbox"/>	REPAIRING WELL <input type="checkbox"/>
FRACTURE TREATMENT <input type="checkbox"/>	ALTERING CASING <input type="checkbox"/>
SHOOTING OR ACIDIZING <input type="checkbox"/>	ABANDONMENT* <input type="checkbox"/>
(Other) <input type="checkbox"/> Operations	<input type="checkbox"/>

(NOTE: Report results of multiple completion on Well Completion or Recompletion Report and Log form.)

17. DESCRIBE PROPOSED OR COMPLETED OPERATIONS (Clearly state all pertinent details, and give pertinent dates, including estimated date of starting any proposed work. If well is directionally drilled, give subsurface locations and measured and true vertical depths for all markers and zones pertinent to this work.)*

4-1-85 thru 4-7-85 Drilling to 2,002'. Ran 50 joints of 9 5/8" 36# J55 ST&C casing. Set at 2001'. Cemented with 600 sxs RFC, tailed with 200 sxs Class "G".

4-8-85 thru 4-30-85 Drilling to 8,827'.

(SEE ATTACHMENT FOR DETAILS.)

18. I hereby certify that the foregoing is true and correct

SIGNED Stephanie McFarland TITLE Production Clerk DATE 5-9-85
 (This space for Federal or State office use)

APPROVED BY _____ TITLE _____ DATE _____
 CONDITIONS OF APPROVAL, IF ANY:

WELL: LINMAR-BLEY 2-25C7
LOCATION: SEC. 25, T3S, R7W, DUCHESNE COUNTY, UTAH
OPERATOR: LINMAR ENERGY CORPORATION
CONTRACTOR: CALIBER DRILLING, RIG #44
OBJECTIVE ZONE: WASATCH FORMATION
ESTIMATED TD: 10,500'

PAGE 9

4-29-85 8,570' Day 30; Drilling, made 123' in 10 hrs. MW 9.3, Vis 37, WL 7.2, Cake 2, PH 9. Remarks: Circulate and build volume in mud pits, lost circulation fully, mix and condition drilling fluid, pump 200 barrels down hole and work pipe, partial returns for a short time, mix and condition fluid while circ thru fill up line keeping hole full, pump 120 barrels down with some returns, mix and condition fluid and build volume in pits, pump down hole while swabbing up, regained circulation, drill to 8488, well shows flow, no pressures after shutting, circu thru choke then thru buster, no gas, well still flows on connections. Drilling at 8570. Lost approx 1200 barrels mud last 24 hours. BGG: 400-800. BG: 900-1000.
DC: \$13,129 CUM: \$541,087
DMC: \$ 6,338 CMC: \$147,221

4-30-85 8,827' Day 31; Drilling, made 257' in 23 1/2 hrs. MW 9.2+, Vis 38, WL 8, Cake 2, PH 9.5. Remarks: Drill, rig service, drilling at 8827, lost approx 100 barrels of mud last 24 hours. BOP drills being held and recorded and equipment being checked tourly. Show 36; 8575-79; Drill Rate: before 6 min, during 3 min, after 5 min. Formation Gas: before 500 units, during 900 units, after 800 units. BGG: 500-1000. CG: 840-1100.
DC: \$10,610 CUM: \$571,697
DMC: \$21,783 CMC: \$169,004

5-1-85 9,057' Day 32; Drilling, made 230' in 23 1/2 hrs. MW 9.2+, Vis 39, WL 10, Cake 2, PH 11.5. Remarks: Drill, rig service, drilling at 9057, lost approx 100 barrels of mud last 24 hours. BOP drills being held and recorded and equipment checked tourly. Show 37; 8935-39; Drill Rate: before 5.5 min, during 4 min, after 6.5 min. Formation Gas: before 750 units, during 1150 units, after 700 units. No flour or oil. BGG: 700. CG: 850.
DC: \$14,600 CUM: \$586,297
DMC: \$ 6,782 CMC: \$175,786

5-2-85 9,277' Day 33; Drilling, made 220' in 23 1/2 hrs. MW 9.2, Vis 37, WL 11, Cake 2, PH 11. Remarks: Drill, rig service, drilling at 9277. BGG: 800. CG: 950.
DC: \$10,114 CUM: \$596,411
DMC: \$ 1,716 CMC: \$177,502

5-3-85 9,475' Day 34; Drilling, made 198' in 22 hrs. MW 9.3, Vis 43, WL 10.4, Cake 2, PH 11. Remarks: Drill, rig service, drill to 9475, bit slowed, circulate bottoms up to pull out of hole for new bit. BGG: 200-800. CG: 640-1100.
DC: \$9,666 CUM: \$606,077
DMC: \$2,268 CMC: \$179,770

WELL: LINMAR-BLEY 2-25C7
 LOCATION: SEC. 25, T3S, R7W, DUCHESNE COUNTY, UTAH
 OPERATOR: LINMAR ENERGY CORPORATION
 CONTRACTOR: CALIBER DRILLING, RIG #44
 OBJECTIVE ZONE: WASATCH FORMATION
 ESTIMATED TD: 10,500'

PAGE 8

4-25-85 (cont'd) pressures, SIDPP 0, SICP 500, raise mud weight to 8.9. Then to 9.1. Presently circulating gas out, lost approx 250 barrels of mud, circulate thru choke with 10-20' flare and partial returns. Show 32; 8026-8031; Drill Rate: before 4 min, during 3 min, after 5 min. Formation Gas: before 180 units, during 2500 units, after 800 units. Show 33; 8057-8061; Drill Rate: before 4 min, during 3 min, after 4 min. Formation Gas: before 800 units, during 1300 units, after 1000 units. BGG: 30. CG: 100.
 DC: \$9,041 CUM: \$473,361
 DMC: \$2,792 CMC: \$102,601

4-26-85 8,133' Day 27; Drilling, made 17' in 1 hr. MW 9.0, Vis 60, WL 16, Cake 2, PH 10. Remarks: Circulate out gas, 2nd shut in pressures, sicp 250, sidpp 0, mud weight at 9.2, lost circulation while circulating last circ thru choke. Mix mud and build volume, LCM to 25% circulate out gas after regaining circulation, drill to 8133, service rig, make connection and try to get back on bottom, hole got very tight, work pipe up and lay down 1 joint at a time until above tight hole, 13 joints and 5 stands. Start washing and reaming back to bottom at 7263, mix LCM and mud continuously, losing fluid while working pipe and reaming, lost approx. 2500 barrels last 24 hours. Presently reaming at 7602. BGG: 10-400. TG: 1300.
 DC: \$10,126 CUM: \$483,487
 DMC: \$ 6,816 CMC: \$109,417

4-27-85 8,275' Day 28; Drilling, made 142' in 14 hrs. MW 9.1, Vis 50, WL 6.4, Cake 2, PH 10. Remarks: Wash and ream, rig service, circulate and condition mud after reaming to bottom, circulate bottoms up, lost 250 barrels while reaming, drill to 8204, lost returns, mix LCM and work pipe, lost 350 barrels mud came back, gas increase at 8218, units to 1400, no oil, drilling with mud going thru gas buster, lost approx 1000 barrels mud last 24 hours. Drilling at 8275. BGG: 700. CG: 900. Show 34; 8218-8220; Drill Rate: before 7.5 min, during 3.5 min, after 5 min. Formation Gas: before 200 units, during 1400 units, after 800 units.
 DC: \$27,137 CUM: \$510,624
 DMC: \$21,142 CMC: \$130,559

4-28-85 8,447' Day 29; Drilling, made 172' in 14 hrs. MW 9.4, Vis 43, WL 7.2, Cake 2, PH 10. Remarks: Drill, rig service, drill to 8442, gas to surface from drilling break, put well on choke, Sidpp 50, Sicp 300, raise mud weight to 9.3 ppg, circulate mud to surface, well still kicking, raise mud weight to 9.4 ppg, circulate to surface thru choke, go off choke, drilling while circulating thru gas buster, lost most of pit volume, raising mud volume in pits and conditioning mud. Lost approx 500 barrels last 24 hours. Show 35; 8311-8322; Drill Rate: before 5 min, during 4 min, after 4.5 min. Formation Gas: before 800 units, during 1300 units, after 1100 units. Yellow green oil stn, yellow flour, white milky cut. BGG: 1200-400. CG: 1400.
 DC: \$17,334 CUM: \$527,958
 DMC: \$10,324 CMC: \$140,883

WELL: LINMAR-BLEY 2-25C7
LOCATION: SEC. 25, T3S, R7W, DUCHESNE COUNTY, UTAH
OPERATOR: LINMAR ENERGY CORPORATION
CONTRACTOR: CALIBER DRILLING, RIG #44
OBJECTIVE ZONE: WASATCH FORMATION
ESTIMATED TD: 10,500'

PAGE 7

-
- 4-22-85 7,422' Day 23; Drilling, made 171' in 15 1/2 hrs. MW 8.6, Vis 38, WL 32.2, Cake 2, PH 11.5. Remarks: Drilling to 7250', circulate and survey, drilling to 7310, circulate bottoms up, drop TOTCO and pull out of hole for bit, pick up bit #11 and trip in hole, wash and ream 90' to bottom, no fill, presently drilling at 7422. BGG: 250-500. CG: 600-1000. CG: 1400. Survey 5.5° at 7250. 5.5° at 7310. Show 23; 7214-216; Drill Rate; before 5 min, during 4 min, after 5 min. Formation Gas: before 150 units, during 700 units, after 250 units. Show 24; 7234-256; Drill Rate: before 4.5 min, during 3 min, after 4.5 min. formation Gas: before 360 units, during 1300 units, after 240 units. Show 25; 7281-290; Drill Rate: before 4.5 min, during 7 min, after 5 min. Formation Gas: before 250 units, during 700 units, during 360 units. Show 26; 7296-300; Drill Rate: before 5 min, during 3 min, after 4.5 min. Formation Gas: before 360 units, during 600 units, after 500 units. Trace of fluorescence.
DC: \$11,914 CUM: \$438,287
DMC: \$ 6,844 CMC: \$ 92,692
- 4-23-85 7,696' Day 24; Drilling, made 274' in 23 1/2 hrs. MW 8.8, Vis 40, PH 11.5. Remarks: Drill, rig service, drilling at 7696. BGG: 30. CG: 100. Show 27; 7333-7338; Drill Rate: before 5 min, during 2.5 min, after 5 min. Formation Gas: before 440 units, during 650 units, after 300 units. Trace yellow fluorescence. Show 28; 7352-7357; Drill Rate: before 4.5 min, during 4 min, after 6 min. Formation Gas: before 220 units, during 500 units, after 200 units. Trace yellow fluorescence. Show 29; 7401-7414; Drill Rate: before 5 min, during 3 min, after 6 min, Formation Gas: before 300 units, during 450 units, after 300 units. Dull yellow fluorescence.
DC: \$10,586 CUM: \$448,873
DMC: \$ 1,609 CMC: \$ 94,301
- 4-24-85 7,983' Day 25; Drilling, made 287' in 22 1/2 hrs. MW 8.8, Vis 40, PH 11.5. Remarks: Drill, rig service, drill, survey, drilling at 7983'. Show 30; 7774-7781; Drill Rate: before 4 min, during 3 min, after 3.5 min. Formation Gas: before 260 units, during 400 units, after 350 units. Show 31; 7784-7788; Drill Rate; before 3.5 min, during 3 min, after 3.5 min. Formation Gas: before 350 units, during 400 units, after 260 units. BGG: 30. CG: 100. Survey 3.4° at 7810.
DC: \$15,447 CUM: \$464,320
DMC: \$ 5,508 CMC: \$ 99,809
- 4-25-85 8,116' Day 26; Drilling, made 133' in 10 1/4 hrs. MW 9.0, Vis 36, WL 21, Cake 2, PH 10.5. Remarks: Drill, rig service, drill to 8104, circulate bottoms up and pull out of hole for new bit, change bit and go in hole, wash and ream 110' to bottom, tight hole no fill, drill to 8070, circulate out gas show, no flow, drill thru gas buster to 8116, well started blowing, shut in well and record

WELL: LINMAR-BLEY 2-25C7
LOCATION: SEC. 25, T3S, R7W, DUCHESNE COUNTY, UTAH
OPERATOR: LINMAR ENERGY CORPORATION
CONTRACTOR: CALIBER DRILLING, RIG #44
OBJECTIVE ZONE: WASATCH FORMATION
ESTIMATED TD: 10,500'

PAGE 6

4-19-85 (cont'd) gage IBS"s ok, pick up bit #10, trip in hole, wash and ream from 6200 to bottom no fill, drilling to 6451'. No losses. BGG: 60. CG: 80. TG: 400. Show 12; 6131-137'; Drill Rate: before 2 min, during 1.5 min, after 2.5 min. Formation Gas: before 50 units, during 150 units, after 50 units.
DC: \$12,686 CUM: \$405,342
DMC: \$ 6,991 CMC: \$ 84,152

4-20-85 6,851' Day 21; Drilling, made 400' in 21 1/2 hrs. MW 8.8, Vis 40, WL 21.6, Cake 2, PH 10.5. Remarks: Drilling to 6550, service rig, check BOP's, drilling to 6445, install rotating head, drilling to 6770, circulate and survey, drilling at 6851. BGG: 20. CG: 40. Survey 5.5° at 6770'. Show 13; 6426-437'; Drill Rate: before 4 min, during 1.25 min, after 4 min. Formation Gas: before 60 units, during 120 units, after 40 units. Trace of fluorescence, good cut, trace of darkbrown oil. Show 14; 6626-629; Drill Rate: before 2 min, during 1.5 min, after 2 min. Formation Gas: before 100 units, during 150 units, after 100 units. No flour, no cut, trace darkbrown oil. Show 15; 6632-640; Drill Rate: before 2 min, during 1 min, after 1.5 min. Formation Gas: before 100 units, during 200 units, after 180 units. No flour or cut, trace of darkbrown oil. Show 16; 6646-656; Drill Rate: before 1.5 min, during 1 min, after 2 min. Formation Gas: before 180 units, during 450 units, after 140 units. Trace of darkbrown oil. Show 17; 6662-671; Drill Rate: before 2 min, during 1.5 min, after 2.5 min. Formation Gas: before 140 units, during 300 units, after 100 units. No fluorescence or cut. Trace of darkbrown oil. Show 18; 6672-676; Drill Rate: before 2.5 min, during 2 min, after 2.5 min. Formation Gas: before 100 units, during 160 units, after 120 units. Trace flour, trace of cut, trace darkbrown oil. Show 19; 6773-778; Drill Rate: before 4.5 min, during .5 min, after 5 min. formation Gas: before 150 units, during 320 units, after 50 units, trace of flour, trace of cut, trace darkbrown oil.
DC: \$10,970 CUM: \$416,312
DMC: \$ 1,150 CMC: \$ 85,302

4-21-85 7,251' Day 22; Drilling, made 400' in 21 hrs. MW 8.8, Vis 40, WL 32.6, Cake 2, PH 10.5. Remarks: Drilling to 6886, lost circulation, spot LCM pill on bottom, pull off bottom, 100' break circulation. Work back to bottom slow with full returns, lost 400 barrels of mud, presently drilling at 7251. BGG: 20-150. CG: 40-800. Show 20; 6960-964; Drill Rate: before 1.5 min, during 1 min, after 1.5 min. Formation Gas: before 150 units, during 280 units, after 200 units. Weak cut, trace of brown black oil. Show 21; 6970-980; Drill Rate: before 1.5 min, during 1 min, after 1.5 min. Formation Gas: before 200 units, during 300 units, after 200 units. Show 22; 7209-213; Drill Rate: before 3.5 min, during 3 min, after 5 min. Formation Gas: before 30 units, during 700 units, after 200 units. Yellow flour, weak cut.
DC: \$10,061 CUM: \$426,373
DMC: \$ 546 CMC: \$ 85,848

WELL:
LOCATION:
OPERATOR:
CONTRACTOR:
OBJECTIVE ZONE:
ESTIMATED TD:

LINMAR-BLEY 2-25C7
SEC. 25, T3S, R7W, DUCHESNE COUNTY, UTAH
LINMAR ENERGY CORPORATION
CALIBER DRILLING, RIG #44
WASATCH FORMATION
10,500'

PAGE 5

- 4-16-85 5,453' Day 17; Drilling, made 525' in 23 1/4 hrs. MW 8.7, Vis 31, WL 29.6, Cake 2, PH 10.5. Remarks: Drilling to 5050, survey, check BOP's, drilling to 5174, survey, drilling to 5453. No problems or losses. Show 4; 5385-388; Drill Rate: before 2.5 min, during 2 min, after 3.5 min. Formation Gas: before 50 units, during 120 units, after 50 units. No oil, fluorescence or cut. BGG: 20. CG: 40. Survey 5.75° at 5174'.
DC: \$20,529 CUM: \$365,684
DMC: \$ 7,624 CMC: \$ 62,995
- 4-17-85 5,895' Day 18; Drilling, made 442' in 21 3/4 hrs. MW 8.7, Vis 31, WL 29.6, Cake 2, PH 11.5. Remarks: Drilling to 5500, survey, Check BOP's, repack swivel and change out wash pipe, drilling to 5668, survey, drilling to 5895. No problems or loss. BGG: 20-80. CG: 60-120. Survey 5.75° at 5668'. Show 5; 5770-777'; Drill Rate: before 2.5 min, during 1 min, after 3 min. Formation Gas: before 50 units, during 100 units, after 40 units. Dark brown oil. Show 6; 5884-887; Drill Rate: before 2.5 min, during 2 min, after 3 min. Formation Gas: before 30 units, during 150 units, after 80 units. Darkbrown oil.
DC: \$16,022 CUM: \$381,706
DMC: \$ 5,627 CMC: \$ 76,246
- 4-18-85 6,244' Day 19; Drilling, made 349' in 18 hrs. MW 8.5, Vis 40, Cake 2, PH 11.5. Remarks: Drilling to 6022', lost total returns, drilled fractures at 6018-6022, mixed pills and pumped same, layed down two singles able to get full returns, lost 900 barrels total, drilling to 6222. BGG: 20-90. CG: 80-150. Show 7; 5900-02; Drill Rate: before 2.5 min, during 1 min, after 2.5 min. Formation Gas: before 80 units, during 150 units, after 50 units. Trace of yellow flour, slow cut. Show 8; 5924-931; Drill Rate: before 3.5 min, during 2 min, after 3.5 min. Formation Gas: before 70 units, during 120 units, after 30 units. trace of yellow flour, slow cut. Show 9; 5950-60; Drill Rate: before 3 min, during 2 min, after 3 min. Formation Gas: before 60 units, during 140 units, after 80 units. Trace of yellow flour, slow cut. Show 10; 5972-76; Drill Rate: before 3 min, during 2.75 min, after 3 min. Formation Gas: before 100 units, during 160 units, after 50 units. Show 11; 6076-084; Drill Rate: before 2.5 min, during 2 min, after 2.5 min. Formation Gas: before 40 units, during 200 units, after 100 units.
DC: \$10,950 CUM: \$392,656
DMC: \$ 915 CMC: \$ 77,161
- 4-19-85 6,451' Day 20; Drilling, made 107' in 13 hrs. MW 8.7, Vis 38, WL 22.4, Cake 2, PH 10. Remarks: Drilling to 6289, circulate for bit trip, pull out of hole to 5824, blew up mud line, rig up fill up line off of low pressure. Mud line, pull lut of hole to casing shoe, repair mud line with welder, pull out of hole,

WELL: LINMAR-BLEY 2-25C7
LOCATION: SEC. 25, T3S, R7W, DUCHESNE COUNTY, UTAH
OPERATOR: LINMAR ENERGY CORPORATION
CONTRACTOR: CALIBER DRILLING, RIG #44
OBJECTIVE ZONE: WASATCH FORMATION
ESTIMATED TD: 10,500'

PAGE 4

4-12-85 3,625' Day 15; Drilling, made 340' in 18 3/4 hrs. MW 8.6, Vis 35, WL 12, Cake 2, PH 10. Remarks: Drill to 3325, service rig, check BOP's, drilling to 3505, lost returns, mix LCM work pipe and spot same, drilling to 3625, lost returns, mix LCM, work pipe and spot LCM. First loss 500 barrels, second loss as of 6:00 400 barrels.
DC: \$17,357 CUM: \$281,318
DMC: \$ 7,187 CMC: \$ 31,387

4-13-85 3,977' Day 16; Drilling, made 352' in 16 hrs. MW 8.8, Vis 36, WL 12.6, Cake 2, PH 10. Remarks: Drilling to 3644, partial returns, mix LCM pill, pump same. Drilling with partial then full returns to 3706 service rig, check BOP's, drilling to 3726, circulate and survey drilling to 3891, repair rotary seal on #1 motor clutch, drilling to 3877, lost returns work pipe spot LCM pills, able to swab returns back, drilling. Survey 7.75° at 3726'. BGG: 10-20. CG: 15-40.
DC: \$17,620 CUM: \$298,938
DMC: \$ 7,424 CMC: \$ 39,048

4-14-85 4,424' Day 15; Drilling, made 447' in 17 1/2 hrs. MW 8.4, Vis 36, WL 12.6, Cake 2, PH 11. Remarks: Drilling to 4002, circulate and pull out of hole, tight at 3330, wash and ream up from 3330 to 3300, pull out of hole, pick up bit #9, trip in hole to 3912, wash and ream from 3912 to bottom, drilling to 4215, survey drilling. Lost 800 barrels over last 24 hours. Plugged two jets on bit #9, shortly after reaching bottom. Made day correction from spud. BGG: 10-80. CG: 40-150. TG: 280. Survey 6.50° at 4215.
DC: \$24,445 CUM: \$323,383
DMC: \$13,690 CMC: \$ 52,738

4-15-85 4,928' Day 16; Drilling, made 504' in 23 1/4 hrs. MW 8.5, Vis 36, WL 29.6, Cake 2, PH 10. Remarks: Drilling to 4556, service rig, check BOP's, drilling to 4710, survey, drilling to 4928'. Show 3; 4513-517'; Drill Rate: before 2.5 min, during 1.5 min, after 2.5 min. Formation Gas: before 20 units, during 30 units, after 20 units.
DC: \$21,772 CUM: \$345,155
DMC: \$10,257 CMC: \$ 62,995

Note:
show 1 & 2
to be included
in 4-14-85
report

Show #1; 3935-939'; Drill Rate: before 2 min, during 1.5 min, after 3 min. Formation Gas: before 10 units, during 50 units, after 10 units. Yellow fluorescence, weak cut, light brn oil stain.
Show #2, 4134-140; Drill Rate: before 1.5 min, during 1 min, after 1.5 min. Formation Gas: before 100 units, during 200 units, after 60 units. Yellow fluorescence, weak cut, light brown oil.

WELL: LINMAR-BLEY 2-25C7
LOCATION: SEC. 25, T3S, R7W, DUCHESNE COUNTY, UTAH
OPERATOR: LINMAR ENERGY CORPORATION
CONTRACTOR: CALIBER DRILLING, RIG #44
OBJECTIVE ZONE: WASATCH FORMATION
ESTIMATED TD: 10,500'

PAGE 3

4-8-85 2,107' Day 11; Drilling, made 105' in 3 hrs. MW 8.4, Vis 27, PH 10.5. Remarks: Cut off casing and weld on casing head, let head cool and test, Nipple up BOP's pressure test blind rams, pipe rams, choke lines and manifold, kelly valves, and kelly to 5000 psi, test hydrill to 2500 psi, change out swivel and upper kelly cock, strap and caliper BHA, pick up BHA, fill mud pits after changing out reserve pit pumps, go in hole, tag cement stringers at 1934', drill float collar and cement, test casing with 500 psi, drill cement and shoe at 2001', drill formation to 2037, survey out 9.75°, drilling at 2107
DC: \$14,216 CUM: \$181,767
DMC: \$ 494 CMC: \$ 9,021

4-9-85 2,702' Day 12; Drilling, made 594' in 13 1/2 hrs. MW 8.7, Vis 35, WL 15.2, Cake 2, PH 10. Remarks: Drill to 2264', lost circulation, mix LCM pills and pump in hole, and lost approx 300 barrels. Survey at 2285 out 9°, survey at 2590 out 8.25°, drill to 2678, lost circulation, mix and pump LCM pills, lost approx 300 barrels, drill to 2702, lost circulation, mix and pump LCM pills, lost approx 1000 barrels. Presently circulating with partial returns.
DC: \$48,657 CUM: \$230,424
DMC: \$ 805 CMC: \$ 9,826

4-10-85 2,990' Day 13; Drilling, made 288' in 13 1/2 hrs. MW 8.6, Vis 38, WL 12.4, Cake 2, PH 9. Remarks: Mixing LCM and build volume, drill string stuck in hole, work pipe for 4 1/4 hrs until Halliburton arrived with liquid nitrogen, rig up lines and displace mud in hole with nitrogen, start pumping nitrogen at 11:30 am, pipe came free at 11:55 am, circulate thru choke displacing nitrogen with mud and moving pipe cont. pull out of hole for plugged bit, unplug bit, pick up 5 more drill collars, go in hole to bottom of casing, break circulation, go in hole drilling at 2990'.
DC: \$14,510 CUM: \$244,934
DMC: \$ 5,374 CMC: \$ 15,200

4-11-85 3,285' Day 14; Drilling, made 295' in 17 3/4 hrs. MW 8.6, Vis 35, WL 12, Cake 2, PH 10. Remarks: Drill to 3035', lost circulation mix LCM and build mud volume while circulating at idle, gained partial returns, continue to mix LCM and pump slowly with full returns, try to pump at drilling rate, lost returns, pump slow get returns, shut off pump and rotate with hole full of mud while building pit volume, hole healed up in 2 hours, drilling at 3285. Lost approximately 2800 barrels in last 2 days. Survey 8° at 3080'.
DC: \$19,027 CUM: \$263,961
DMC: \$ 9,000 CMC: \$ 24,200

WELL: LINMAR-BLEY 2-25C7
LOCATION: SEC. 25, T3S, R7W, DUCHESNE COUNTY, UTAH
OPERATOR: LINMAR ENERGY CORPORATION
CONTRACTOR: CALIBER DRILLING, RIG #44
OBJECTIVE ZONE: WASATCH FORMATION
ESTIMATED TD: 10,500'

PAGE 2

4-5-85 1,700' Day 8; Drilling, made 78' in 3 hrs. MW 8.8, Vis 40, WL 17.6, Cake 2, PH 10.5. Remarks: Ream to bottom, Drill with 350,000# and 90 rpm, survey at 1625' out 12°, drill to 1655' with 250,000# and 90 rpm, survey, out 11.5°, drill with 28,000# and 90 rpm to 1681, survey, out 10°, repair rotary chain and tighten bolts on sprocket, drilling at 1700' with 32,000# and 90 rpm.
DC: \$3,462 CUM: \$130,776
DMC: \$ 381 CMC: \$ 6,608

4-6-85 1,946' Day 9; Drilling, made 240' in 17 1/4 hrs. MW 8.7, Vis 55, WL 15.2, Cake 2, PH 10.5. Remarks: Drill with 33,000# on bit and 90 rpm, survey at 1719 out 11.75°, Rig service, drill to 1750 with 30,000# on bit and 90 rpm, survey, out 11.25°. Drill to 1764 with 33,000# on bit and 90-100 rpm, bit wore out, pull out of hole and move IBS down 30', wait on bit, make up bit and ho in hole, wash and ream 20' of fill to bottom, drill to 1790, survey, out 10.25°, drilled with 32,000# and 100 rpm, drill to 1841 with 36,000# on bit and 90-100 rpm, survey, out 10° drill to 1903 with 36,000# on bit and 90-100 rpm, survey out 10°, drilling at 1946 with 36,000# and 90-100 rpm.
DC: \$7,865 CUM: \$138,641
DMC: \$ 595 CMC: \$ 7,203

4-7-85 2,002' Day 10; Drilling, made 36' in 4 hrs. MW 8.7, Vis 53, WL 12, Cake 2, PH 10.5. Remarks: Drill to 2,000', circulate and short trip to drill collars, go in hole, circulate, pull out of hole to 8" drill collars, rig up lay down equipment, lay down bit drill collars, rig up to run casing, run casing, circulate, cement 9 5/8" casing with Dowell. Rig down casing crews w/ circulating. Ran 50 joints 9 5/8" 36# J55 ST&C casing, total length 1998.19 with Dowell guide shoe and Dowell differential fill float collar, length 3.58, set shoe at 2001', and float collar at 1961', cemented with 600 sxs Dowell RFC cement with 10# Psx N-29, tailed with 200 sxs Class "G" cement with 1/4# P-sx D-29 (celloflake) displaced with water, good circulation throughout cementation, bumped plug with 1300# psi at 8:20 pm Released pressure, float equipment held, Wait on cement, cut off conductor pipe and casing, welding on casing head.
Survey 9 3/4° at 1992.
DC: \$28,910 CUM: \$167,551
DMC: \$ 1,324 CMC: \$ 8,527

STATE OF UTAH
DEPARTMENT OF NATURAL RESOURCES
DIVISION OF OIL, GAS, AND MINING

PRINT IN TRIPLICATE*
(Other instructions on reverse side)

<p>SUNDRY NOTICES AND REPORTS ON WELLS (Do not use this form for proposals to drill or to deepen or plug back to a different reservoir. Use "APPLICATION FOR PERMIT—" for such proposals.)</p>		<p>5. LEASE DESIGNATION AND SERIAL NO. 14-20-H62- 4307</p> <p>6. IF INDIAN, ALLOTTEE OR TRIBE NAME Ute</p> <p>7. UNIT AGREEMENT NAME N/A</p> <p>8. FARM OR LEASE NAME Bley</p> <p>9. WELL NO. 2-25C7</p> <p>10. FIELD AND POOL, OR WILDCAT Cedar Rim</p> <p>11. SEC., T., R., M., OR BLM. AND SURVEY OR AREA Sec. 25, T3S, R7W, USM</p> <p>12. COUNTY OR PARISH Duchesne</p> <p>13. STATE Utah</p>
<p>1. OIL WELL <input checked="" type="checkbox"/> GAS WELL <input type="checkbox"/> OTHER <input type="checkbox"/></p> <p>2. NAME OF OPERATOR LINMAR ENERGY CORPORATION</p> <p>3. ADDRESS OF OPERATOR 7979 E. Tufts Ave., Pkwy., Ste. 604, Denver, CO 80237</p> <p>4. LOCATION OF WELL (Report location clearly and in accordance with any State requirements.* See also space 17 below.) At surface 1531'FWL, 1536' FSL (NESW)</p>	<p>14. PERMIT NO. 43-013-31083</p> <p>15. ELEVATIONS (Show whether DF, RT, GR, etc.) 6620' Ground Elev.</p>	

16. Check Appropriate Box To Indicate Nature of Notice, Report, or Other Data

NOTICE OF INTENTION TO:		SUBSEQUENT REPORT OF:	
TEST WATER SHUT-OFF <input type="checkbox"/>	PULL OR ALTER CASING <input type="checkbox"/>	WATER SHUT-OFF <input type="checkbox"/>	REPAIRING WELL <input type="checkbox"/>
FRACTURE TREAT <input type="checkbox"/>	MULTIPLE COMPLETE <input type="checkbox"/>	FRACTURE TREATMENT <input type="checkbox"/>	ALTERING CASING <input type="checkbox"/>
SHOOT OR ACIDIZE <input type="checkbox"/>	ABANDON* <input type="checkbox"/>	SHOOTING OR ACIDIZING <input type="checkbox"/>	ABANDONMENT* <input type="checkbox"/>
REPAIR WELL <input type="checkbox"/>	CHANGE PLANS <input type="checkbox"/>	(Other) <input type="checkbox"/> Operations	

(NOTE: Report results of multiple completion on Well Completion or Recompletion Report and Log form.)

17. DESCRIBE PROPOSED OR COMPLETED OPERATIONS (Clearly state all pertinent details, and give pertinent dates, including estimated date of starting any proposed work. If well is directionally drilled, give subsurface locations and measured and true vertical depths for all markers and zones pertinent to this work.) *

5-1-85 thru 5-8-85 Drilling to 10,459'.

(SEE ATTACHMENT FOR DETAILS.)

18. I hereby certify that the foregoing is true and correct

SIGNED Stephanie M. Farland TITLE Production Clerk DATE 5-9-85
Stephanie McFarland

(This space for Federal or State office use)

APPROVED BY _____ TITLE _____ DATE _____
 CONDITIONS OF APPROVAL, IF ANY:

WELL: LINMAR-BLEY 2-25C7
LOCATION: SEC. 25, T3S, R7W, DUCHESNE COUNTY, UTAH
OPERATOR: LINMAR ENERGY CORPORATION
CONTRACTOR: CALIBER DRILLING, RIG #44
OBJECTIVE ZONE: WASATCH FORMATION
ESTIMATED TD: 10,500'

PAGE 10

5-4-85 9,555' Day 35; Drilling, made 80' in 10 1/2 hrs. MW 9.3, Vis 40, WL 8.4, Cake 2, PH 11. Remarks: Pull out of hole, lay down 18 joints of drill pipe, repair break out tong line, pull out of hole to 2240 hit tight spot, pulled to 40,000# over instantly but also would let go instantly, work pipe up and hold overpull into tight hole, gained 4', low drum chain broke, repair chain, pull into tight hole and hold, slowly work pipe up into casing, pull out of hole, change bits and gauge IBSSs, go in hole to bottom of casing, cut 123' of drilling line, go in hole to tight spot, bridge took 15,000# and let go instantly, wipe up and down thru bridge until free, go in hole, break in bit, drilling at 9555, lost 170 barrels during trip and drilling, rest of hole in good cond. Wash and ream on bridge during trip out of hole. BGG: 200-450. CG: 650-700. TG: 1900 thru buster 1200.
DC: \$14,524 CUM: \$650-700
DMC: \$ 2,779 CMC: \$182,549

5-5-85 9,821' Day 36; Drilling, made 266' in 23 1/2 hrs. MW 9.3, Vis 45, WL 9.6, Cake 2, PH 11.2. Remarks: Drill, rig service, drilling at 9821, lost approx 150 barrels mud due to seepage last 24 hrs. BGG: 100. CG: 150.
DC: \$11,528 CUM: \$632,129
DMC: \$ 3,590 CMC: \$186,139

5-6-85 10,059' Day 37; Drilling, made 238' in 23 hrs. MW 9.25, Vis 43, WL 9.2, Cake 2, PH 10.8. Remarks: Drill, rig service, drill, replace swivel packing, drilling at 10,059', lost approx 135 barrels of mud last 24 hours.
DC: \$9,689 CUM: \$641,818
DMC: \$1,330 CMC: \$187,469

5-7-85 10,271' Day 38; Drilling, made 212' in 23 1/4 hrs. MW 9.3, Vis 45, WL 8, Cake 2, PH 11.2. Remarks: Drill, rig service, drill, plugged 2 jets, work pipe free 1/4 hr, plug came free, drilling at 10,271', lost approx 60 barrels of mud last 24 hrs. Show 38; 10130-135'; Drill Rate: before 5.5 min, during 4 min, after 5 min. Formation Gas: before 600 units, during 900 units, after 600 units. BGG: 400-600. CG: 920-1200.
DC: \$10,499 CUM: \$652,317
DMC: \$ 3,005 CMC: \$190,474

5-8-85 10,459' Day 39; Drilling, made 188' in 23 1/2 hrs. MW 9.3, Vis 45, WL 7.2, Cake 2, PH 11.5. Remarks: Drilling, service rig, drilling at 10,459', lost approx 250 barrels mud last 24 hrs. BGG: 400-700. CG: 860-1250.
DC: \$11,130 CUM: \$663,447
DMC: \$ 3,066 CMC: \$193,540

STATE OF UTAH
DEPARTMENT OF NATURAL RESOURCES
DIVISION OF OIL, GAS, AND MINING

SUNDRY NOTICES AND REPORTS ON WELLS

(Do not use this form for proposals to drill or to deepen or plug back to a different reservoir.
Use "APPLICATION FOR PERMIT—" for such proposals.)

RECEIVED
MAY 20 1985

1. <input type="checkbox"/> OIL WELL <input checked="" type="checkbox"/> GAS WELL <input type="checkbox"/> OTHER		5. LEASE DESIGNATION AND SERIAL NO. 14-20-H62- 4307
2. NAME OF OPERATOR LINMAR ENERGY CORPORATION		6. IF INDIAN, ALLOTTEE OR TRIBE NAME Ute
3. ADDRESS OF OPERATOR 7979 E. Tufts Ave., Pkwy., Ste. 604, Denver, CO 80237		7. UNIT AGREEMENT NAME N/A
4. LOCATION OF WELL (Report location clearly and in accordance with any State requirements.* See also space 17 below.) At surface 1531'FWL, 1536' FSL (NESW)		8. FARM OR LEASE NAME Bley
14. PERMIT NO. 43-013-31083	15. ELEVATIONS (Show whether OF, RT, GR, etc.) 6620' Ground Elev.	9. WELL NO. 2-25C7
		10. FIELD AND POOL, OR WILDCAT Cedar Rim
		11. SEC., T., E., M., OR BLK. AND SURVEY OR AREA Sec. 25, T3S, R7W, USM
		12. COUNTY OR PARISH Duchesne
		13. STATE Utah

16. Check Appropriate Box To Indicate Nature of Notice, Report, or Other Data

NOTICE OF INTENTION TO:		SUBSEQUENT REPORT OF:	
TEST WATER SHUT-OFF <input type="checkbox"/>	PULL OR ALTER CASING <input type="checkbox"/>	WATER SHUT-OFF <input type="checkbox"/>	REPAIRING WELL <input type="checkbox"/>
FRACTURE TREAT <input type="checkbox"/>	MULTIPLE COMPLETE <input type="checkbox"/>	FRACTURE TREATMENT <input type="checkbox"/>	ALTERING CASING <input type="checkbox"/>
SHOOT OR ACIDIZE <input type="checkbox"/>	ABANDON* <input type="checkbox"/>	SHOOTING OR ACIDIZING <input type="checkbox"/>	ABANDONMENT* <input type="checkbox"/>
REPAIR WELL <input type="checkbox"/>	CHANGE PLANS <input type="checkbox"/>	(Other) <u>Operations</u> <input type="checkbox"/>	

(NOTE: Report results of multiple completion on Well Completion or Recompletion Report and Log form.)

17. DESCRIBE PROPOSED OR COMPLETED OPERATIONS (Clearly state all pertinent details, and give pertinent dates, including estimated date of starting any proposed work. If well is directionally drilled, give subsurface locations and measured and true vertical depths for all markers and zones pertinent to this work.)*

5-9-85 thru 5-11-85 Drilling to 10,644'.

5-11-85 Run electric logs.

5-12-85 thru 5-13-85 Rig up and run 5½" casing, 48 joints 23# N80, 209 joints 20# N80 cement with 1050 sacks light tailed by 500 sacks class "G".

5-14-85 Release rig.

5-15-85 Waiting on completion unit.

(SEE ATTACHMENT FOR DETAILS.)

18. I hereby certify that the foregoing is true and correct.

SIGNED Stephanie McFarland TITLE Production Clerk DATE 5-17-85
Stephanie McFarland

(This space for Federal or State office use)

APPROVED BY _____ TITLE _____ DATE _____
 CONDITIONS OF APPROVAL, IF ANY:

WELL: LINMAR-BLEY 2-25C7
 LOCATION: SEC. 25, T3S, R7W, DUCHESNE COUNTY, UTAH
 OPERATOR: LINMAR ENERGY CORPORATION
 CONTRACTOR: CALIBER DRILLING, RIG #44
 OBJECTIVE ZONE: WASATCH FORMATION
 ESTIMATED TD: 10,500'

-
- 5-9-85 10,543' Day 40; Drilling, made 84' in 8 3/4 hrs. MW 9.2, Vis 50, WL 8.8, Cake 2, PH 11. Remarks: Drilling, rig service, drilling to 10,543', lost returns, mix LCM, sweep and pump down, shut down and build volume, pump in with no returns, shut down to build volume, well started to flow, shut in on choke, had no drill pipe pressure, had 50# casing pressure, circulate thru choke with 9.2 ppg mud, could not hole back pressure, would pump away, circulate with regulated flow, continued to pick up gas and loose mud, shut in and build volume, lost 1000 bls mud last 24 hrs. Show 39; 10487-496'; Drill Rate: before 7 min, during 5.5 min, after 6 min. Formation Gas: before 500 units, during 1100 units, after 400 units. Fair cut, tr flour, trace brown oil. BGG: 400/700. CG: 860/1250.
 DC: \$11,204 CUM: \$674,651
 DMC: \$ 3,350 CMC: \$196,890
- 5-10-85 10,641' Day 41; Drilling, made 98' in 15 1/2 hrs. MW 9.1+, Vis 52, WL 6. Cake 1, PH 9.0. Remarks: Condition mud with well shut in and build volume, circulate thru choke, circulate out gas and put on gas buster, hole quit taking mud, gained 150 bls mud back, resume drilling, drilling at 10,641', losing mud slow, have lost approx 800 bls mud last 24 hrs. BGG: 200. CG: 350.
 DC: \$14,944 CUM: \$689,595
 DMC: \$ 7,120 CMC: \$214,010
- 5-11-85 10,644' Day 42; Drilling, made 3' in 3/4 hr. MW 9.2+, Vis 65, WL 6.8, Cake 1, PH 10. Remarks: Drilling to 10,644', circulate for logs and condition mud, trip out of hole, rig up Dresser Atlas and run electric logs, rig down Dresser Atlas, pick up and re-run bit #12, tripping in hole. BGG: 200. CG: 280.
 DC: \$26,570 CUM: \$716,165
 DMC: \$18,776 CMC: \$222,786
- 5-12-85 10,644' Day 43; MW 9.2+, Vis 55, WL 6.4, Cake 2, PH 10. Remarks: Finish tripping in hole, wash and ream 135' to bottom, circulate and condition to run casing, rig up Parrish lay down machine and lay down all drill pipe and drill collars, lay down BHA, rig up and running 5/5" casing. BGG: 600/200. TG: 1700.
 DC: \$31,130 CUM: \$747,295
 DMC: \$ 5,244 CMC: \$228,030
- 5-13-85 10,644' Day 44; Run 5/5" casing, ran 48 joints 23# N80, 209 jts 20# N80, total casing, 10,652', dowell side jet shoe, differential fill float collar, rig up cement head and wash down 20' to bottom, circulate up gas, rig up and cement with dowell with 20 bbl spacer, 10 bbl chem wash, 1050 sxs Lite Wt III with 10% salt, 10#/sx kolite, .25#/sk D29, .25% D120, 329 bbls, 13.4 ppg slurrrie, tailed with 500 sxs Class "G" with 10% salt, .25#/sx D29, .3%

SUNDRY NOTICES AND REPORTS ON WELLS

(Do not use this form for proposals to or to deepen or plug back to a different reservoir. Use "APPLICATION FOR PERMIT—" for such proposals.)

6. IF INDIAN, ALLOTTEE OR TRIBE NAME

Ute

3

1. OIL WELL GAS WELL OTHER

7. UNIT AGREEMENT NAME

N/A

2. NAME OF OPERATOR
Linmar Energy Corporation

8. FARM OR LEASE NAME

Bley

3. ADDRESS OF OPERATOR
P.O. Box 1327, Roosevelt, Utah 84066

9. WELL NO.

2-25C7

4. LOCATION OF WELL (Report location clearly and in accordance with any State requirements. See also space 17 below.)
At surface

10. FIELD AND POOL, OR WILDCAT

Cedar Rim

1531' FWL, 1536' FSL(NESW)

RECEIVED

JUL 05 1985

11. SEC., T., R., M., OR BLK. AND SURVEY OR AREA

Sec.25-T3S-R7W, USM

14. PERMIT NO.
43-013-31083

15. ELEVATIONS (Show whether DT, RT, CR, etc.)

6620' GL

DIVISION OF OIL

12. COUNTY OR PARISH 13. STATE

Duchesne

Utah

16. Check Appropriate Box To Indicate Nature of Notice, Report, or Other Data

NOTICE OF INTENTION TO:

TEST WATER SHUT-OFF

PULL OR ALTER CASING

FRACTURE TREAT

MULTIPLE COMPLETE

SHOOT OR ACIDIZE

ABANDON*

REPAIR WELL

CHANGE PLANS

(Other)

SUBSEQUENT REPORT OF:

WATER SHUT-OFF

REPAIRING WELL

FRACTURE TREATMENT

ALTERING CASING

SHOOTING OR ACIDIZING

ABANDONMENT*

(Other)

(NOTE: Report results of multiple completion on Well Completion or Recompletion Report and Log form.)

17. DESCRIBE PROPOSED OR COMPLETED OPERATIONS (Clearly state all pertinent details, and give pertinent dates, including estimated date of starting any proposed work. If well is directionally drilled, give subsurface locations and measured and true vertical depths for all markers and zones pertinent to this work.)

The Bley 2-25C7 made its initial production of hydrocarbons June 30, 1985.

18. I hereby certify that the foregoing is true and correct

SIGNED [Signature]

TITLE Engineer

DATE July 1, 1985

(This space for Federal or State office use)

APPROVED BY _____

TITLE _____

DATE _____

CONDITIONS OF APPROVAL, IF ANY:

*See Instructions on Reverse Side

STATE OF UTAH
DEPARTMENT OF NATURAL RESOURCES
DIVISION OF OIL, GAS, AND MINING

SUNDRY NOTICES AND REPORTS ON WELLS

(Do not use this form for proposals to drill or to deepen or plug back to a different reservoir. Use "APPLICATION FOR PERMIT—" for such proposals.)

RECEIVED

1. OIL WELL <input checked="" type="checkbox"/> GAS WELL <input type="checkbox"/> OTHER <input type="checkbox"/>		5. LEASE DESIGNATION AND SERIAL NO. 14-20-H62- 4307
2. NAME OF OPERATOR LINMAR ENERGY CORPORATION		6. IF INDIAN, ALLOTTEE OR TRIBE NAME Ute
3. ADDRESS OF OPERATOR 7979 E. Tufts Ave., Pkwy., Ste. 604, Denver, CO 80237		7. UNIT AGREEMENT NAME N/A
4. LOCATION OF WELL (Report location clearly and in accordance with any State requirements. See also space 17 below.) At surface 1531'FWL, 1536' FSL (NESW)		8. FARM OR LEASE NAME Bley
14. PERMIT NO. 43-013-31083		9. WELL NO. 2-25C7
15. ELEVATIONS (Show whether OF, RT, OR, etc.) 6620' Ground Elev.		10. FIELD AND POOL, OR WILDCAT Cedar Rim
		11. SEC., T., R., M., OR BLK. AND SURVEY OR AREA Sec. 25, T3S, R7W, USM
		12. COUNTY OR PARISH Duchesne
		13. STATE Utah

16. Check Appropriate Box To Indicate Nature of Notice, Report, or Other Data

NOTICE OF INTENTION TO:		SUBSEQUENT REPORT OF:	
TEST WATER SHUT-OFF <input type="checkbox"/>	PULL OR ALTER CASING <input type="checkbox"/>	WATER SHUT-OFF <input type="checkbox"/>	REPAIRING WELL <input type="checkbox"/>
FRACTURE TREAT <input type="checkbox"/>	MULTIPLE COMPLETE <input type="checkbox"/>	FRACTURE TREATMENT <input type="checkbox"/>	ALTERING CASING <input type="checkbox"/>
SHOOT OR ACIDIZE <input type="checkbox"/>	ABANDON* <input type="checkbox"/>	SHOOTING OR ACIDIZING <input type="checkbox"/>	ABANDONMENT* <input type="checkbox"/>
REPAIR WELL <input type="checkbox"/>	CHANGE PLANS <input type="checkbox"/>	(Other) <u>Operations</u> <input type="checkbox"/>	
(Other) <input type="checkbox"/>		(NOTE: Report results of multiple completion on Well Completion or Recompletion Report and Log form.)	

17. DESCRIBE PROPOSED OR COMPLETED OPERATIONS (Clearly state all pertinent details, and give pertinent dates, including estimated date of starting any proposed work. If well is directionally drilled, give subsurface locations and measured and true vertical depths for all markers and zones pertinent to this work.)*

6-25-85 thru 6-30-85 Complete Lower Wasatch Formation.

6-30-85 thru 7-2-85 Flow testing.

7-3-85 Acidized

7-4-85 POP.

(SEE ATTACHMENT FOR DETAILS.)

18. I hereby certify that the foregoing is true and correct

SIGNED Stephanie M. McFarland TITLE Production Clerk DATE 7-10-85
Stephanie McFarland

(This space for Federal or State office use)

APPROVED BY _____ TITLE _____ DATE _____
 CONDITIONS OF APPROVAL, IF ANY:

WELL: LINMAR-BLEY 2-25C7
LOCATION: SEC. 25, T3S, R7W, DUCHESNE COUNTY, UTAH
OPERATOR: LINMAR ENERGY CORPORATION
CONTRACTOR: CALIBER DRILLING, RIG #44
OBJECTIVE ZONE: WASATCH FORMATION
ESTIMATED TD: 10,500'

PAGE 12

5-13-85 (cont'd) retarder, 105 bbls, 15.8 ppg slurry, drop top plug and displace with 229.5 bbls water, bump plug 4.5 under calculated volume with 400 psi, bleed back 2.5 barrels, plug down at 7:15 pm 5-12-85, float held, had good returns throughout cement job, rig down dowell, wait on cement and clean pits and pulling bolts from stack, set slips at 3:00 am with 125,000# on slips, pick up stack and cut off, nipple down. BGG: 200. TG: 1100.
DC: \$201,268 CUM: \$948,563
DMC: \$ 3,668 CMC: \$231,698

5-14-85 10,644' Day 45; Remarks: Nipple down on BOP stack, make final cut on casing, nipple up tubing spool, pressure test, did not hold test, wait on new pack off, nipple up same and pressure test to 5000 psi, held, release rig at 2:00 pm 5-13-85.
DC: \$17,588 CUM: \$966,151
DMC: \$ 0 CMC: \$231,698

Waiting on completion unit.
Drop from report until activity resumes

6-25-85 Day 1; Move in rig up WOWSCO Rig #26. Nipple down cap. Nipple up BOP. Pick up and run in hole with 4.545" bladed mill, 5 1/2" 23# casing scraper, and 323 joints tubing. Tag float collar at 10,595. Hook up pump lines and circulate bottoms up.
DC: \$3700 CUM: \$3700

6-26-85 Day 2; Circulate 300 barrels water around hole. Test casing to 2500 psi. Pull out of hole and lay down 74 joints tubing. Drop Bakerlite ball and test tubing to 5000 psi. Pull out of hole with 248 joints tubing. Test blind rams to 2500 psi.
DC: \$2300 CUM: \$6000

6-27-85 Day 3; Move in rig up Oil Well Perforators. Run CBL-GR-CCL from 10,582 to 3800. Good bond.
DC: \$2000 CUM: \$8000

6-28-85 Day 4; Move in rig up Oil Well Perforators. Perforate the following DIL-GR log intervals with 3 JSPF, using 4" guns, 120 degree phasing.
Run #1
Starting PSI 200# line displacement
10555,10505,10496,10490,10476,10456,10430,10402,10346,10325,
10315,10282,10269,10245,10220,10209,10175,10166.
Finishing psi 0
Run #2.
Starting PSI 100#.
10139,10130,10102,10097,10086,10078,10018,9992,9984,9958,9944,
9938,9896,9886,9866,9836,9823,9771.

**UNITED STATES
DEPARTMENT OF THE INTERIOR
GEOLOGICAL SURVEY**

SUBMIT IN DUPLICATE*

(See other instructions on reverse side)

Form approved.
Budget Bureau No. 42-R355.5.

WELL COMPLETION OR RECOMPLETION REPORT AND LOG *

RECEIVED
JUL 18 1985

1a. TYPE OF WELL: OIL WELL GAS WELL DRY Other

b. TYPE OF COMPLETION: NEW WELL WORK OVER DEEP-EN PLUG BACK DIFF. RESRV. Other

2. NAME OF OPERATOR
Linmar Energy Corporation

3. ADDRESS OF OPERATOR
7979 E. Tufts Ave., Pkwy., Ste. 604, Denver, CO 80237

4. LOCATION OF WELL (Report location clearly and in accordance with any State requirements)*
At surface 1531' FWL, 1536' FSL (NESW)
At top prod. interval reported below Same
At total depth Same

5. LEASE DESIGNATION AND SERIAL NO.
14-20-H62-4307

6. IF INDIAN, ALLOTTEE OR TRIBE NAME
Ute

7. UNIT AGREEMENT NAME
N/A

8. FARM OR LEASE NAME
Bley

9. WELL NO.
2-25C7

10. FIELD AND POOL, OR WILDCAT
Cedar Rim

11. SEC., T., R., M., OR BLOCK AND SURVEY OR AREA
Sec. 25, T3S, R7W, USM

12. COUNTY OR PARISH
Duchesne

13. STATE
Utah

14. PERMIT NO. 43-013-31083 DATE ISSUED 3/7/85

15. DATE SPUDDED 3/31/85 16. DATE T.D. REACHED 5/11/85 17. DATE COMPL. (Ready to prod.) 7/3/85 18. ELEVATIONS (DF, RKB, RT, GR, ETC.)* 6620' Ground Elev. 19. ELEV. CASINGHEAD Same

20. TOTAL DEPTH, MD & TVD 10,644' 21. PLUG, BACK T.D., MD & TVD 10,595' 22. IF MULTIPLE COMPL., HOW MANY* 23. INTERVALS DRILLED BY → ROTARY TOOLS X CABLE TOOLS

24. PRODUCING INTERVAL(S), OF THIS COMPLETION—TOP, BOTTOM, NAME (MD AND TVD)*
10,555-8,403' Wasatch

25. WAS DIRECTIONAL SURVEY MADE No

26. TYPE ELECTRIC AND OTHER LOGS RUN
CNL, FDC, GR, CAL, SP, DIL, OIL, RES

27. WAS WELL CORED No

28. CASING RECORD (Report all strings set in well)

CASING SIZE	WEIGHT, LB./FT.	DEPTH SET (MD)	HOLE SIZE	CEMENTING RECORD	AMOUNT PULLED
9-5/8"	36#	2,001'	12 1/2"	600 sxs. RFC, 200 sxs. "G"	
5 1/2"	23#, 20#	10,644'	8-3/4"	1050 sxs. Lite III, 500 sxs. "G"	

29. LINER RECORD

SIZE	TOP (MD)	BOTTOM (MD)	SACKS CEMENT*	SCREEN (MD)

30. TUBING RECORD

SIZE	DEPTH SET (MD)	PACKER SET (MD)
2-7/8"	7,906'	7,906'

31. PERFORATION RECORD (Interval, size and number)
See Attachment.

32. ACID, SHOT, FRACTURE, CEMENT SQUEEZE, ETC.

DEPTH INTERVAL (MD)	AMOUNT AND KIND OF MATERIAL USED
10,555-8,403'	25,000 gals. 15% HCl

33.* PRODUCTION

DATE FIRST PRODUCTION 7/4/85 PRODUCTION METHOD (Flowing, gas lift, pumping—size and type of pump) Flowing WELL STATUS (Producing or shut-in) Producing

DATE OF TEST	HOURS TESTED	CHOKE SIZE	PROD'N. FOR TEST PERIOD	OIL—BBL.	GAS—MCF.	WATER—BBL.	GAS-OIL RATIO
7/4/85	24	25/64"	→	109	443	154	4064

FLOW. TUBING PRESS.	CASING PRESSURE	CALCULATED 24-HOUR RATE	OIL—BBL.	GAS—MCF.	WATER—BBL.	OIL GRAVITY-API (CORR.)
225 psi	-0-	→	109	443	154	42

34. DISPOSITION OF GAS (Sold, used for fuel, vented, etc.) Sold TEST WITNESSED BY E. B. Whicker

35. LIST OF ATTACHMENTS
Perforation record.

36. I hereby certify that the foregoing and attached information is complete and correct as determined from all available records

SIGNED John W. Clark TITLE Vice President DATE 7/15/85

*(See Instructions and Spaces for Additional Data on Reverse Side)

INSTRUCTIONS

General: This form is designed for submitting a complete and correct well completion report and log on all types of lands and leases to either a Federal agency or a State agency, or both, pursuant to applicable Federal and/or State laws and regulations. Any necessary special instructions concerning the use of this form and the number of copies to be submitted, particularly with regard to local, area, or regional procedures and practices, either are shown below or will be issued by, or may be obtained from, the local Federal and/or State office. See instructions on Items 22 and 24, and 33, below regarding separate reports for separate completions.

If not filed prior to the time this summary record is submitted, copies of all currently available logs (drillers, geologists, sample and core analysis, all types electric, etc.), formation and pressure tests, and directional surveys, should be attached hereto, to the extent required by applicable Federal and/or State laws and regulations. All attachments should be listed on this form, see item 35.

Item 4: If there are no applicable State requirements, locations on Federal or Indian land should be described in accordance with Federal requirements. Consult local State or Federal office for specific instructions.

Item 18: Indicate which elevation is used as reference (where not otherwise shown) for depth measurements given in other spaces on this form and in any attachments.

Items 22 and 24: If this well is completed for separate production from more than one interval zone (multiple completion), so state in item 22, and in item 24 show the producing interval, or intervals, top(s), bottom(s) and name(s) (if any) for only the interval reported in item 33. Submit a separate report (page) on this form, adequately identified, for each additional interval to be separately produced, showing the additional data pertinent to such interval.

Item 29: "Sacks Cement": Attached supplemental records for this well should show the details of any multiple stage cementing and the location of the cementing tool.

Item 33: Submit a separate completion report on this form for each interval to be separately produced. (See instruction for items 22 and 24 above.)

37. SUMMARY OF POROUS ZONES:

SHOW ALL IMPORTANT ZONES OF POROSITY AND CONTENTS THEREOF; CORED INTERVALS; AND ALL DRILL-STEM TESTS, INCLUDING DEPTH INTERVAL TESTED, CUSHION USED, TIME TOOL OPEN, FLOWING AND SHUT-IN PRESSURES, AND RECOVERIES

FORMATION	TOP	BOTTOM	DESCRIPTION, CONTENTS, ETC.

38. GEOLOGIC MARKERS

NAME	TOP	
	MEAS. DEPTH	TRUE VERT. DEPTH
Green River	2,170'	
Wastach	6,103'	
DIVISION OF OIL GAS & MINING		

RECEIVED

JUN 18 1963

WELL: LINMAR-BLEY 2-25C7
 LOCATION: SEC. 25, T3S, R7W, DUCHESNE COUNTY, UTAH
 OPERATOR: LINMAR ENERGY CORPORATION
 CONTRACTOR: CALIBER DRILLING, RIG #44
 OBJECTIVE ZONE: WASATCH FORMATION
 ESTIMATED TD: 10,500'

PAGE 15

7-3-85 (con'td)	600	2	1890	Start flush after pumping 617 barrels
	620	6	2560	
	640	8	3350	
	660	10	4490	
	680	10	4510	
	735	10	4520	
	Max	10	4520	
	Avg	10	3962	
	ISIP		1800	2:10 pm
	5 min		1640	
	10 min		1470	
	15 min		1200	

Rig down Dowell. Shut well in overnight.
 DC: \$25,400

CUM: \$100,200

7-4-85	Flowed 24 hours on 25/64" choke.	109 BO, 154 BW, 443 MCF, 225 psi.
7-5-85	Flowed 24 hours on 25/64" choke.	112 BO, 792 BW, 451 MCF, 250 psi.
7-6-85	Flowed 24 hours on 25/64" choke.	42 BO, 408 BW, 291 MCF, 310 psi.
7-7-85	Flowed 24 hours on 25/64" choke.	48 BO, 518 BW, 291 MCF, 290 psi.
7-8-85	Flowed 24 hours on 25/64" choke.	60 BO, 451 BW, 291 MCF, 250 psi.
7-9-85	Flowed 24 hours on 25/64" choke.	37 BO, 415 BW, 291 MCF, 210 psi.

WELL: LINMAR-BLEY 2-25C7
 LOCATION: SEC. 25, T3S, R7W, DUCHESNE COUNTY, UTAH
 OPERATOR: LINMAR ENERGY CORPORATION
 CONTRACTOR: CALIBER DRILLING, RIG #44
 OBJECTIVE ZONE: WASATCH FORMATION
 ESTIMATED TD: 10,500'

6-30-85 (cont'd) 240 joints tubing in hole. Nipple up well head. Test casing to 2600#, held 5 min. Bled pressure off. Hook up flow line. Rig up swab unit. Make 9 runs. Recover 77 barrels fluid. Well start to flow. Rig down service unit. Turn well to treater. These proposed perms were not shot.
 8,376,8,347,8,299,8,291,8,215,8,176,8,166,8,146,8,108,8,099,
 8,068,8,027,8,000,7,990,7,972,7,964.
 DC: \$35,100 CUM: \$74,800

6-30-85 Flowed 10 hours on 30/64" choke. 10 BO, 125 BW, 208 MCF, 225 psi.

7-1-85 Flowed 24 hours on 25/64" choke. 94 BO, 471 BW, 328 MCF, 180 psi.

7-2-85 Flowed 24 hours on 25/64" choke. 44 BO, 383 BW, 328 MCF, 150 psi.

7-3-85 Rig up Dowell to acidize Wasatch perms from 10,555 to 8403' with 25,000 gal 15% HCL containing 200 gal A200, 165 gal scale squeeze chemical and dropping 400 RCNB's throughout. Held safety meeting and pressure test lines to 9500 psi. Pump as follows:

CUM	RATE	PRESSURE	COMMENT
bb1	BPM	psi	
0	0	950	
20	8	1680	
40	8	3320	
60	10	4200	
80	10	4020	
100	10	3980	
120	10	4000	
140	10	4000	
160	10	3990	
180	10	4000	
200	10	3980	
220	10	4000	
240	10	4000	
260	10	4000	
280	10	4000	
300	10	4050	
320	10	4000	
340	10	4050	
360	10	4080	
380	10	4100	
400	10	4120	
420	10	4100	
440	10	4120	
460	10	4150	
480	10	4200	
500	10	4280	
520	10	4210	
540	10	4150	
560	10	4140	
580	10	4160	Lost blender pressure after pump 588 bls.

WELL: LINMAR-BLEY 2-25C7
 LOCATION: SEC. 25, T3S, R7W, DUCHESNE COUNTY, UTAH
 OPERATOR: LINMAR ENERGY CORPORATION
 CONTRACTOR: CALIBER DRILLING, RIG #44
 OBJECTIVE ZONE: WASATCH FORMATION
 ESTIMATED TD: 10,500'

JUL 18 1985

DIVISION OF OIL
GAS & MINING

PAGE 13

6-28-85 (cont'd) Run #3, run in hole to 9550' unable to get down. Pull out of hole with gun, swelled carrier.

Run #4. Starting psi 0#.
 9775,9743,9736,9730,9634,9559,9575,9539,9526,9515,9496,9459,
 9436,0427,9406,9370,9345,9326. Finishing psi 0#.

Run #5, starting PSI 0#.
 9304,9296,0277,9271,9242,9226,9218,9214,9171,9163,9152,9125,
 9119,9103,9089,9060,9019,8996. Finishing psi 0#.

Run #6, starting psi 0#.
 8976,8936,8932,8917,8914,8884,8861,8846,8830,8815,8797,8784
 8779,8740,8732,8723,8708,8696. Finishing psi 0#.

Run #7, Starting psi 0#.
 8687,8649,8631,8622,8600,8564,8558,8542,8521,8512,8501,8490,
 8455,8449,8426,8420,8413,8403. Finishing psi 0#.

Run #8, run in hole to 6508'. Hung up with gun. Work to free, unable. Pressure up on well, pumping in at 1500#, 2 bpm. Pull out of rope socket. Pull out of hole. Rig down lubricator. 400# on casing.
 DC: \$3300 CUM: \$11,300

6-29-85 Day 5; SIP 400#. Bled down. Pick up 3 7/8" OD overshot dressed with 1-7/16" grapple. Run in hole with 46 joints, well kick. Hook up and circulate 40 barrels formation water. Run in hole with 52 joints, well kick. Circulate 200 barrels formation water. Shut in for 30 minutes. PSI 1600#. Flow back 50 barrels oil. Bled casing down to 200#. Well wouldn't die. Displace hole to 3224' with 63 barrels brine water. Flow back 10 barrels brine. Shut well in. Bull headed 40 barrels brine down casing. Circulate 8 barrels water down tubing to kill. Run in hole with 64 joints to 5325'. Circulate 90 barrels water down tubing. Bull head 40 barrels down casing at 1500#. Run in hole with 32 joints tubing to 6379'. Hook up to bleed well down for night.
 DC: \$28,400 CUM: \$39,700

6-30-85 Day 6; SIP 600#. Bled down, hook up and circulate hole with 120 barrels water. Bull head 90 barrels water in hole. Well dead. Run in hole with 4 joints tubing. Try to latch on fish. Pull out of hole with 198 joints and overshot. No fish. Run in hole with overshot. Rotate over fish. Pull 10,000# over, came free. Pull out of hole with 198 joints, overshot, and lay down gun. Gun had 1 screw missing. Pick up Baker R3 DG 5 1/2" 23# big bore packer, National type V cavity with BS in place and tested on surface to 3000#, and run in hole with 248 joints tubing. Pull out of hole and lay down 8 joints. Nipple down BOP. Set packer at 7906 with 12,000# down on packer. total of

UNITED STATES
DEPARTMENT OF THE INTERIOR
GEOLOGICAL SURVEY

SUBMIT IN DUPLICATE

(See other instructions on reverse side)

Form approved
Budget Bureau No. 42-R355.5.

5. LEASE DESIGNATION AND SERIAL NO.

14-20-H62-4307

6. IF INDIAN, ALLOTTEE OR TRIBE NAME

Ute

7. UNIT AGREEMENT NAME

N/A

8. FARM OR LEASE NAME

Bley

9. WELL NO.

2-25C7

10. FIELD AND POOL, OR WILDCAT

Cedar Rim

11. SEC., T., R., M., OR BLOCK AND SURVEY OR AREA

Sec. 25, T3S, R7W, USM

12. COUNTY OR PARISH

Duchesne

13. STATE

Utah

WELL COMPLETION OR RECOMPLETION REPORT AND LOG *

1a. TYPE OF WELL: OIL WELL GAS WELL DRY Other

b. TYPE OF COMPLETION: NEW WELL WORK OVER DEEP-EN PLUG BACK DIFF. RESVR. Other

2. NAME OF OPERATOR

Linmar Energy Corporation

3. ADDRESS OF OPERATOR

7979 E. Tufts Ave., Pkwy., Ste. 604, Denver, CO 80237

4. LOCATION OF WELL (Report location clearly and in accordance with any State requirements)*

At surface 1531' FWL, 1536' FSL (NESW)

At top prod. interval reported below Same

At total depth Same

14. PERMIT NO. 43-013-31083
DATE ISSUED 3/7/85

15. DATE SPUNDED 3/31/85
16. DATE T.D. REACHED 5/11/85
17. DATE COMPL. (Ready to prod.) 7/3/85
18. ELEVATIONS (DF, REB, RT, GR, ETC.)* 6620' Ground Elev.
19. ELEV. CASINGHEAD Same

20. TOTAL DEPTH, MD & TVD 10,644'
21. PLUG, BACK T.D., MD & TVD 10,595'
22. IF MULTIPLE COMPL., HOW MANY*
23. INTERVALS DRILLED BY
ROTARY TOOLS X
CABLE TOOLS

24. PRODUCING INTERVAL(S), OF THIS COMPLETION—TOP, BOTTOM, NAME (MD AND TVD)*
10,555-8,403' Wasatch
25. WAS DIRECTIONAL SURVEY MADE No

26. TYPE ELECTRIC AND OTHER LOGS RUN
CNL, FDC, GR, CAL, SP, DIL
27. WAS WELL CORED No

28. CASING RECORD (Report all strings set in well)

CASING SIZE	WEIGHT, LB./FT.	DEPTH SET (MD)	HOLE SIZE	CEMENTING RECORD	AMOUNT PULLED
9-5/8"	36#	2,001'	12 1/4"	600 sxs. RFC, 200 sxs. "G"	
5 1/2"	23#, 20#	10,644'	8-3/4"	1050 sxs. Lite III, 500 sxs. "G"	

29. LINER RECORD					30. TUBING RECORD		
SIZE	TOP (MD)	BOTTOM (MD)	SACKS CEMENT*	SCREEN (MD)	SIZE	DEPTH SET (MD)	PACKER SET (MD)
					2-7/8"	7,906'	7,906'

31. PERFORATION RECORD (Interval, size and number)		32. ACID, SHOT, FRACTURE, CEMENT SQUEEZE, ETC.	
INTERVAL	SIZE	DEPTH INTERVAL (MD)	AMOUNT AND KIND OF MATERIAL USED
See Attachment.		10,555-8,403'	25,000 gals. 15% HCl

33.* PRODUCTION

DATE FIRST PRODUCTION		PRODUCTION METHOD (Flowing, gas lift, pumping—size and type of pump)				WELL STATUS (Producing or shut-in)	
7/4/85	Flowing					Producing	
DATE OF TEST	HOURS TESTED	CHOKER SIZE	PROD'N. FOR TEST PERIOD	OIL—BBL.	GAS—MCF.	WATER—BBL.	GAS-OIL RATIO
7/4/85	24	25/64"	→	109	443	154	4064
FLOW. TUBING PRESS.	CASING PRESSURE	CALCULATED 24-HOUR RATE	OIL—BBL.	GAS—MCF.	WATER—BBL.	OIL GRAVITY-API (CORR.)	
225 psi	-0-	→	109	443	154	42	

34. DISPOSITION OF GAS (Sold, used for fuel, vented, etc.)
Sold
TEST WITNESSED BY
E. B. Whicker

35. LIST OF ATTACHMENTS
Perforation record.

36. I hereby certify that the foregoing and attached information is complete and correct as determined from all available records
SIGNED John W. Clark TITLE Vice President DATE 7/15/85

*(See Instructions and Spaces for Additional Data on Reverse Side)

GENERAL SURVEY

SUNDRY NOTICES AND REPORTS ON WELLS

(Do not use this form for proposals to drill or to deepen or plug back to a different reservoir. Use "APPLICATION FOR PERMIT—" for such proposals.)

5. LEASE DESIGNATION AND SERIAL NO. D 2

6. IF INDIAN, ALLOTTEE OR TRIBE NAME

Ute

7. UNIT AGREEMENT NAME

N/A

8. FARM OR LEASE NAME

Bley

9. WELL NO.

2-25C7

10. FIELD AND POOL, OR WILDCAT

Cedar Rim

11. SEC., T., R., M., OR BLK. AND SURVEY OR AREA

Sec. 25-T3S-R7W, USM

12. COUNTY OR PARISH

Duchesne

13. STATE

Utah

RECEIVED

SEP 12 1985

DEPARTMENT OF OIL GAS & MINING

1. OIL WELL GAS WELL OTHER

2. NAME OF OPERATOR

LINMAR ENERGY CORPORATION

3. ADDRESS OF OPERATOR

P.O. BOX 1327, ROOSEVELT, UTAH 84066

4. LOCATION OF WELL (Report location clearly and in accordance with any State requirements. See also space 17 below.)
At surface

1531' FWL, 1536' FSL(NWSW)

14. PERMIT NO.

43-013-31083

15. ELEVATIONS (Show whether DT, NT, OR, etc.)

6620' GL

16. Check Appropriate Box To Indicate Nature of Notice, Report, or Other Data

NOTICE OF INTENTION TO:		SUBSEQUENT REPORT OF:	
TEST WATER SHUT-OFF <input type="checkbox"/>	FULL OR ALTER CASING <input type="checkbox"/>	WATER SHUT-OFF <input type="checkbox"/>	REPAIRING WELL <input type="checkbox"/>
FRACTURE TREAT. <input type="checkbox"/>	MULTIPLE COMPLETE <input type="checkbox"/>	FRACTURE TREATMENT <input type="checkbox"/>	ALTERING CASING <input type="checkbox"/>
SHOOT OR ACIDIZE <input type="checkbox"/>	ABANDON* <input type="checkbox"/>	SHOOTING OR ACIDIZING <input checked="" type="checkbox"/>	ABANDONMENT* <input type="checkbox"/>
REPAIR WELL <input type="checkbox"/>	CHANGE PLANS <input type="checkbox"/>	(Other) _____	

(Note: Report results of multiple completion on Well Completion or Recompletion Report and Log form.)

17. DESCRIBE PROPOSED OR COMPLETED OPERATIONS (Clearly state all pertinent details, and give pertinent dates, including estimated date of starting any proposed work. If well is directionally drilled, give subsurface locations and measured and true vertical depths for all markers and zones pertinent to this work.)

A bridge plug was set at 8350' above the producing perforations and 108 perforations were shot in the upper Wasatch from 8299' to 7704' on 9/6/85 using a 4" casing gun and shooting 3 JSPF as per attached. The perforations were acidized with 15,000 gallons of 15% HCl on 9/9/85.

18. I hereby certify that the foregoing is true and correct

SIGNED [Signature] TITLE Division Engineer DATE August 11, 1985

(This space for Federal or State office use)

APPROVED BY _____ TITLE _____ DATE _____

CONDITIONS OF APPROVAL, IF ANY:

LINMAR ENERGY CORPORATION
 BLEY 2-2507
 FINISH PERFORATING WASATCH/TRANSITION FORMATION

1. POOH WITH PACKER AND TUBING.
2. PERFORATE THE FOLLOWING DIL-GR INTERVALS WHICH WERE LEFT OFF THE ORIGINAL PERFORATING PROCESS.

INTERVAL	FEET	INTERVAL	FEET
7,704'	1'	8,181'	1'
7,708'	1'	8,213-15'	2'
7,724'	1'	8,269'	1'
7,746'	1'	8,291'	1'
7,752'	1'	8,299'	1'
7,764'	1'	8,347'	1'
7,780'	1'	8,366'	1'
7,790'	1'	8,376'	1'
7,803'	1'	8,459'	1'
7,837'	1'	8,552'	1'
7,845'	1'	8,672'	1'
7,870-72'	2'	9,599'	1'
7,964'	1'	9,645'	1'
7,972'	1'	9,691'	1'
7,981'	1'	9,698'	1'
7,990'	1'	9,841'	1'
8,000'	1'	9,853'	1'
8,007'	1'	10,001'	1'
8,027'	1'	10,044'	1'
8,045'	1'	10,051'	1'
8,067-69'	1'	10,092'	1'
8,099'	1'	10,231'	1'
8,108'	1'	10,252'	1'
8,116'	1'	10,351'	1'
8,133'	1'	10,360'	1'
8,146'	1'	10,466'	1'
8,166'	1'		
8,176'	1'		

Omitted

26 INTERVALS, 27 FEET

28 INTERVALS, 30 FEET

TOTAL: 54 INTERVALS, 57 FEET, 171 HOLES

3. RIH WITH PACKER, ACIDIZE AS REQUIRED, AND PLACE ON PRODUCTION.

LINMAR PETROLEUM COMPANY
7979 East Tufts Avenue Parkway, Suite 604
Denver, Colorado 80237
(303) 773-8003

111202

November 6, 1987

State of Utah
Division of Oil, Gas and Mining
3 Triad Center, Suite 350
355 West North Temple
Salt Lake City, Utah 84180-1203

ATTN: Tami Searing

Re: Change of Operator

14503

Dear Ms. Searing:

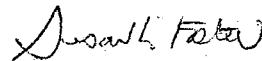
Enclosed is a Sundry Notice, in triplicate, evidencing Change of Operator effective November 1, 1987, from Linmar Energy Corporation to Linmar Petroleum Company covering the wells listed on the Exhibit "A" attached thereto. Such listing of wells should cover all the wells in which you currently show Linmar Energy Corporation as Operator.

If you have any questions whatsoever or if you need any additional information, please do not hesitate to call me collect at (303) 773-8003.

Thank you so very much for all of your assistance and cooperation in this matter.

Very truly yours,

LINMAR PETROLEUM COMPANY



Susan L. Foster
Land Consultant

SLF:jgm

Enclosures

cc: Ed Whicker, Field Superintendent, Linmar Petroleum Company

NOV 9 1987

STATE OF UTAH
DEPARTMENT OF NATURAL RESOURCES
DIVISION OF OIL, GAS, AND MINING

SUNDRY NOTICES AND REPORTS ON WELLS

(Do not use this form for proposals to drill or to deepen or plug back to a different reservoir.
Use "APPLICATION FOR PERMIT—" for such proposals.)

1. OIL WELL <input type="checkbox"/> GAS WELL <input type="checkbox"/> OTHER <input type="checkbox"/>		5. LEASE DESIGNATION AND SERIAL NO.
2. NAME OF OPERATOR See Below		6. IF INDIAN, ALLOTTEE OR TRIBE NAME
3. ADDRESS OF OPERATOR See Below		7. UNIT AGREEMENT NAME
4. LOCATION OF WELL (Report location clearly and in accordance with any State requirements. See also space 17 below.) At surface		8. FARM OR LEASE NAME
14. PERMIT NO.		9. WELL NO. See Exhibit "A" Attached Hereto
15. ELEVATIONS (Show whether OF, AT, ON, etc.)		10. FIELD AND POOL, OR WILDCAT
		11. SEC., T., R., M., OR BLK. AND SURVEY OR AREA See Exhibit "A" Attached Hereto
		12. COUNTY OR PARISH Duchesne & Uintah Counties
		13. STATE Utah

18. Check Appropriate Box To Indicate Nature of Notice, Report, or Other Data

NOTICE OF INTENTION TO:		SUBSEQUENT REPORT OF:	
TEST WATER SHUT-OFF <input type="checkbox"/>	PULL OR ALTER CASING <input type="checkbox"/>	WATER SHUT-OFF <input type="checkbox"/>	REPAIRING WELL <input type="checkbox"/>
FRACTURE TREAT <input type="checkbox"/>	MULTIPLE COMPLETE <input type="checkbox"/>	FRACTURE TREATMENT <input type="checkbox"/>	ALTERING CASING <input type="checkbox"/>
SHOOT OR ACIDIZE <input type="checkbox"/>	ABANDON* <input type="checkbox"/>	SHOOTING OR ACIDIZING <input type="checkbox"/>	ABANDONMENT* <input type="checkbox"/>
REPAIR WELL <input type="checkbox"/>	CHANGE PLANS <input type="checkbox"/>	(Other) _____	
(Other) _____	Change of Operator <input checked="" type="checkbox"/>	(NOTE: Report results of multiple completion on Well Completion or Recompletion Report and Log form.)	

17. DESCRIBE PROPOSED OR COMPLETED OPERATIONS (Clearly state all pertinent details, and give pertinent dates, including estimated date of starting any proposed work. If well is directionally drilled, give subsurface locations and measured and true vertical depths for all markers and zones pertinent to this work.) *

CHANGE OF OPERATOR
(Effective November 1, 1987)

FROM:

Company Name: Linmar Energy Corporation
Address: 7979 East Tufts Avenue Parkway, Suite 604, Denver, Colorado 80237
Telephone No.: (303) 773-8003

TO:

Company Name: Linmar Petroleum Company **19503**
Address: 7979 East Tufts Avenue Parkway, Suite 604, Denver, Colorado 80237
Telephone No.: (303) 773-8003

18. I hereby certify that the foregoing is true and correct
LINMAR ENERGY CORPORATION
SIGNED BY: B. J. Lewis TITLE Vice President DATE November 6, 1987
B. J. Lewis

(This space for Federal or State office use)

APPROVED BY _____ TITLE _____ DATE _____
CONDITIONS OF APPROVAL, IF ANY:

NOV 9 1987

EXHIBIT "A"

Attached to and made a part of that certain Sundry Notice covering
Change of Operator from Linmar Energy Corporation to Linmar
Petroleum Company

<u>WELL NAME</u>	<u>SECTION; TOWNSHIP AND RANGE</u>
Ute Tribal 2-21C7 <u>43-013-31026</u>	Section 21, Township 3 South, Range 7 West
Smith Tribal 2-22C7 <u>43-013-31027</u>	Section 22, Township 3 South, Range 7 West
Smith 2-23C7 <u>43-013-31073</u>	Section 23, Township 3 South, Range 7 West
Ute Tribal 2-24C7 <u>43-013-31028</u>	Section 24, Township 3 South, Range 7 West
Bley 2-25C7 <u>43-013-31083</u>	Section 25, Township 3 South, Range 7 West
McFarlane 1-4D6 <u>43-013-31074</u>	Section 4, Township 4 South, Range 6 West
✓ Peterson 1-5D6 <u>43-013-31075</u>	Section 5, Township 4 South, Range 6 West



DSP529427529

DOGM 56 64'22
7/85

3 Triad Center • Suite 350 • Salt Lake City, UT 84180-1203 • 801-538-5340

Page 29 of 31

MONTHLY OIL AND GAS DISPOSITION REPORT

Operator Name LINMAR ENERGY CORPORATION Utah Account No. N9520
 Address 7979 E. TUFTS AVE. PKWY, SUITE 604 Report Period (Month/Year) 8/85
 City DENVER State CO Zip 80237 Amended Report

Producing Entry No.	Prod. Type	API/ BTU	Beginning Inventory	Volume Produced	Product Disposition			Ending Inventory
					Transported	Used on Site	Flared/Vented	
2-2507	OL		242 241.89	518 517.56	348 347.53			412 411.92
	GS			2098	2098			
10315	NL							
2-2107	OL		394 393.73	2331 2330.55	2293 2292.84			432 431.44
	GS			3848	3848			
10320	NL							
1-406	OL		418.44	3573.21	3470 3469.86			521.79
	GS			2071	2071			
10325	NL			6422 6421.32	6111 6110.23			
OCT 17 1985 TOTAL			1054.66	8017	8017			1365.15
				14439	14128			1

Comments (attach separate sheet if necessary) _____

I have reviewed this report and certify the information to be accurate and complete.

Date 10/9/85

Janeen Seake
Authorized Signature

Telephone (303) 773-8003

an equal opportunity employer

ATTACHMENT
October 31, 1985
RE: UTE BLEY 2-25C7

A field inspection was made at this lease on October 15, 1985. It was found that gas was being flared through a 3-inch line in the production pit, estimating about 200 to 300 MCFS being burned. The only gas being metered was the gas being used on the lease by the separator and boiler. None of the gas being flared was metered.

The production pit was about half full of production water, and the pit was seeping out on the north side of the pit. The Linmar pumper was also on lease at this time, and he told me he would extinguish the flare and the pit would be vacuumed out by truck the next day. He also turned the produced water back into the disposal water tank.

A completion report received July 18, 1985, shows that all gas on lease is being sold, which in fact it was being flared. This well produces 443 MCFS gas.

On October 16, 1985, I spoke with Carroll Estes, production foreman for Linmar Energy. I met him at the pipeline construction. Linmar is constructing a pipeline to gather gas from the last four completed wells, 1-4D6, 1-5D6, 2-25C7, and 2-22C7. Estimated completion is about 30 days, but Mr. Estes said they were still having rights-of-way problems.

Koch Exploration will purchase the gas when the pipeline is completed.

I cautioned Mr. Estes about putting false information on the completion reports. He said he would talk to Mr. Ed Whicker about it.

On October 17, 1985, I returned to this location. The pit had been vacuumed dry. The reserve pit is only partially backfilled. The ground is too wet to finish work. Also, there are still parts of a drilling rig stacked out on location.

UNITED STATES DEPARTMENT OF THE INTERIOR
BUREAU OF LAND MANAGEMENT

SUBMIT IN TRIPPLICATE
(Other instructions on reverse side)

Form approved.
Budget Bureau No. 1004-0135
Expires August 31, 1985

SUNDRY NOTICES AND REPORTS ON WELLS

(Do not use this form for proposals to drill or to deepen or plug back to a different reservoir. Use "APPLICATION FOR PERMIT..." for such proposals.)

1. OIL WELL <input type="checkbox"/> GAS WELL <input checked="" type="checkbox"/> OTHER <input type="checkbox"/>		5. LEASE DESIGNATION AND SERIAL NO. 14-20-H62-4307
2. NAME OF OPERATOR Linmar Petroleum Company		6. IF INDIAN, ALLOTTEE OR TRIBE NAME Ute
3. ADDRESS OF OPERATOR P.O. Box 1327, Roosevelt, Utah 84066		7. UNIT AGREEMENT NAME
4. LOCATION OF WELL (Report location clearly and in accordance with any State requirements. See also space 17 below.) At surface 1531' FWL, 1536' FSL, (NWSW)		8. FARM OR LEASE NAME Bley
14. PERMIT NO. 43-013-31083		9. WELL NO. 2-2507
15. ELEVATIONS (Show whether DE, RT, CR, etc.) 6,620' GR OIL, GAS & MINING		10. FIELD AND POOL, OR WILDCAT Cedar Rim
		11. SEC., T., R., M., OR BLK. AND SURVEY OR AREA Sec. 24, T35, R7W
		12. COUNTY OR PARISH Duchesne
		13. STATE Utah

RECEIVED
MAY 10 1989

16. Check Appropriate Box To Indicate Nature of Notice, Report, or Other Data

NOTICE OF INTENTION TO:		SUBSEQUENT REPORT OF:	
TEST WATER SHUT-OFF <input type="checkbox"/>	PULL OR ALTER CASING <input type="checkbox"/>	WATER SHUT-OFF <input type="checkbox"/>	REPAIRING WELL <input type="checkbox"/>
FRACTURE TREAT <input type="checkbox"/>	MULTIPLE COMPLETE <input type="checkbox"/>	FRACTURE TREATMENT <input type="checkbox"/>	ALTERING CASING <input type="checkbox"/>
SHOOT OR ACIDIZE <input type="checkbox"/>	ABANDON* <input type="checkbox"/>	SHOOTING OR ACIDIZING <input checked="" type="checkbox"/>	ABANDONMENT* <input type="checkbox"/>
REPAIR WELL <input type="checkbox"/>	CHANGE PLANS <input type="checkbox"/>	(Other) <input type="checkbox"/>	

(NOTE: Report results of multiple completion on Well Completion or Recompletion Report and Log form.)

17. DESCRIBE PROPOSED OR COMPLETED OPERATIONS (Clearly state all pertinent details, and give pertinent dates, including estimated date of starting any proposed work. If well is directionally drilled, give subsurface locations and measured and true vertical depths for all markers and zones pertinent to this work.) *

The Wasatch perforations from 7,704' to 8,299' (108 perforations) were acidized with 20,000 gallons 15% HCL on 12/9/87. Acid contained corrosion inhibitor and 200 ball savers which were used for diversion.

18. I hereby certify that the foregoing is true and correct
SIGNED Michael Quinn TITLE Production Engineer DATE 03-May-89
(This space for Federal or State office use)

APPROVED BY _____ TITLE _____ DATE _____
CONDITIONS OF APPROVAL, IF ANY:

*See Instructions on Reverse Side

STATE OF UTAH
DEPARTMENT OF NATURAL RESOURCES
DIVISION OF OIL, GAS, AND MINING

SUBMIT BY TELETYPE
(Other instructions on reverse side)

SUNDRY NOTICES AND REPORTS ON WELLS

(Do not use this form for proposals to drill or to deepen or plug back to a different reservoir. Use "APPLICATION FOR PERMIT—" for such proposals.)

1. OIL WELL GAS WELL OTHER

2. NAME OF OPERATOR
Linnar Petroleum Company

3. ADDRESS OF OPERATOR
P.O. Box 1327, Roosevelt, Utah 84066

4. LOCATION OF WELL (Report location clearly and in accordance with any State requirements. See also space 17 below.)
At surface
1531' FWL, 1536, FSL, (NESW) MAY 18 1989

14. PERMIT NO. 43-073-31083

15. REMARKS (Sho. well depth, etc.)
7,704' to 8,299' ON WASATCH

5. LEASE DESIGNATION AND SERIAL NO.
14-20-H62-4307

6. IS INDIAN, ALLOTTEE OR TRUST LAND?
Ute

7. UNIT AGREEMENT NAME

8. FARM OR LEASE NAME
Bley

9. WELL NO.
2-2507

10. FIELD AND POOL, OR WILDCAT SURVEY OR AREA
Cedar Rim

11. SEC., T., R., M., OR BLK. AND SURVEY OR AREA
Sec. 25, T3S, R7W

12. COUNTY OR PARISH AND STATE
Buchanan Utah

13. Check Appropriate Box To Indicate Nature of Notice, Report, or Other Data

NOTICE OF INTENTION TO:		SUBSEQUENT REPORT OF:	
TEST WATER SHUT-OFF <input type="checkbox"/>	PULL OR ALTER CASING <input type="checkbox"/>	WATER SHUT-OFF <input type="checkbox"/>	REPAIRING WELL <input type="checkbox"/>
FRACTURE TREAT <input type="checkbox"/>	MULTIPLE COMPLETE <input type="checkbox"/>	FRACTURE TREATMENT <input type="checkbox"/>	ALTERING CASING <input type="checkbox"/>
SHOOT OR ACIDIZE <input type="checkbox"/>	ABANDON* <input type="checkbox"/>	SHOOTING OR ACIDIZING <input checked="" type="checkbox"/>	ABANDONMENT* <input type="checkbox"/>
REPAIR WELL <input type="checkbox"/>	CHANGE PLANS <input type="checkbox"/>	(Other) <input type="checkbox"/>	(Other) <input type="checkbox"/>

(NOTE: Report results of multiple completion on Well Completion or Recompletion Report and Log form.)

17. DESCRIBE PROPOSED OR COMPLETED OPERATIONS (Clearly state all pertinent details, and give pertinent dates, including estimated date of starting and proposed work. If well is directionally drilled, give subsurface locations and measured and true vertical depths for all markers and zones pertinent to this work.)

The Wasatch perforations from 7,704' to 8,299' were acidized with 20,000 gallons 15% HCL on 12/9/87. Contained in the acid was 8 gpm corrosion inhibitor. The acid was diverted with 200 ball sealers.

18. I hereby certify that the foregoing is true and correct

SIGNED [Signature] TITLE Production Engineer DATE 09-May-89

(This space for Federal or State office use)

APPROVED BY _____ TITLE _____ DATE _____
CONDITIONS OF APPROVAL, IF ANY:

*See Instructions on Reverse Side

STATE OF UTAH
DEPARTMENT OF NATURAL RESOURCES
DIVISION OF OIL, GAS, AND MINING

SUBMIT IN TRIPLICATE*
(See instructions on reverse side)

SUNDRY NOTICES AND REPORTS ON WELLS

(Do not use this form for proposals to drill or to deepen or plug back to a different reservoir. Use "APPLICATION FOR PERMIT—" for such proposals.)

<p>1. <input type="checkbox"/> OIL WELL <input checked="" type="checkbox"/> GAS WELL <input type="checkbox"/> OTHER</p> <p>2. NAME OF OPERATOR <u>Linmar Petroleum Company</u></p> <p>3. ADDRESS OF OPERATOR <u>P.O. Box 1327, Roosevelt, Utah 84066</u></p> <p>4. LOCATION OF WELL (Report location clearly and in accordance with any State requirements.* See also space 17 below.) <u>At surface</u> <u>1531' FWL, 1536' FSL (NWSW)</u></p> <p>14. PERMIT NO. <u>43-013-31083</u> <i>pow</i></p>		<p>5. LEASE DESIGNATION AND SERIAL NO. <u>14-20-NE2-430</u></p> <p>6. IF INDIAN, ALLOTTEE OR TRIBE NAME <u>Ute</u></p> <p>7. UNIT AGREEMENT NAME</p> <p>8. FARM OR LEASE NAME <u>Bley</u></p> <p>9. WELL NO. <u>2-2507</u></p> <p>10. FIELD AND POOL, OR WILDCAT <u>Cedar Rim</u></p> <p>11. SEC., T., R., M., OR BLK. AND SURVEY OR AREA <u>Sec. 24, T3S, R7W</u></p> <p>12. COUNTY OR PARISH <u>Duchesne</u></p> <p>13. STATE <u>Utah</u></p>
<p>15. ELEVATIONS (Show whether DF, RT, GR, etc.) <u>6,620' GR</u></p>		

16. Check Appropriate Box To Indicate Nature of Notice, Report, or Other Data

NOTICE OF INTENTION TO:		SUBSEQUENT REPORT OF:	
TEST WATER SHUT-OFF <input type="checkbox"/>	PULL OR ALTER CASING <input type="checkbox"/>	WATER SHUT-OFF <input type="checkbox"/>	REPAIRING WELL <input type="checkbox"/>
FRACTURE TREAT <input type="checkbox"/>	MULTIPLE COMPLETE <input type="checkbox"/>	FRACTURE TREATMENT <input type="checkbox"/>	ALTERING CASING <input type="checkbox"/>
SHOOT OR ACIDIZE <input type="checkbox"/>	ABANDON* <input type="checkbox"/>	SHOOTING OR ACIDIZING <input checked="" type="checkbox"/>	ABANDONMENT* <input type="checkbox"/>
REPAIR WELL <input type="checkbox"/>	CHANGE PLANS <input type="checkbox"/>	(Other) <input checked="" type="checkbox"/>	
(Other) <input type="checkbox"/>		(NOTE: Report results of multiple completion on Well Completion or Recompletion Report and Log form.)	

17. DESCRIBE PROPOSED OR COMPLETED OPERATIONS (Clearly state all pertinent details, and give pertinent dates, including estimated date of starting any proposed work. If well is directionally drilled, give subsurface locations and measured and true vertical depths for all markers and zones pertinent to this work.)*

The lower Wasatch perforations were isolated with a CIBP and the well was recompleted in the upper Wasatch Formation on 9/29/90. The intervals from 6,932' - 7,665' were perforated with 3 1/8" casing guns. A total of 68 feet was perforated with 204 holes.

18. I hereby certify that the foregoing is true and correct

SIGNED [Signature] TITLE Production Engineer DATE 16-Oct-90

(This space for Federal or State office use)

APPROVED BY _____ TITLE _____ DATE _____
CONDITIONS OF APPROVAL, IF ANY:

*See Instructions on Reverse Side

STATE OF UTAH
DEPARTMENT OF NATURAL RESOURCES
DIVISION OF OIL, GAS, AND MINING

SUNDRY NOTICES AND REPORTS ON WELLS

(Do not use this form for proposals to drill or to deepen or plug back to a different reservoir. Use "APPLICATION FOR PERMIT—" for such proposals.)

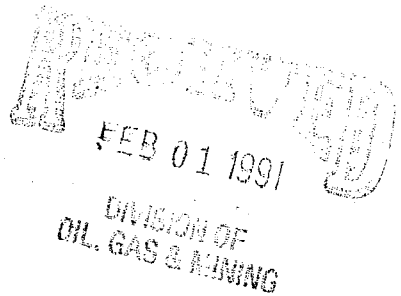
<p>1. <input checked="" type="checkbox"/> OIL WELL <input checked="" type="checkbox"/> GAS WELL <input type="checkbox"/> OTHER</p> <p>2. NAME OF OPERATOR Linmar Petroleum Company</p> <p>3. ADDRESS OF OPERATOR P.O. Box 1327, Roosevelt, Utah 84066</p> <p>4. LOCATION OF WELL (Report location clearly and in accordance with any State requirements.* See also space 17 below.) At surface 1531' FWL, 1536' FSL (NWSW)</p>		<p>5. LEASE DESIGNATION AND SERIAL NO. 14-20-H62-430</p> <p>6. IF INDIAN, ALLOTTEE OR TRIBE NAME Ute</p> <p>7. UNIT AGREEMENT NAME</p> <p>8. FARM OR LEASE NAME Bley</p> <p>9. WELL NO. 2-2507</p> <p>10. FIELD AND POOL, OR WILDCAT Cedar Rim</p> <p>11. SEC., T., R., M., OR BLK. AND SURVEY OR AREA Sec. 24, T3S, R7W</p> <p>12. COUNTY OR PARISH Duchesne</p> <p>13. STATE Utah</p>
<p>14. PERMITTING NO. 43-013-31083 POW</p>	<p>15. ELEVATIONS (Show whether DF, AS, OR, etc.) 6,620 GR</p>	

16. Check Appropriate Box To Indicate Nature of Notice, Report, or Other Data

NOTICE OF INTENTION TO:		SUBSEQUENT REPORT OF:	
TEST WATER SHUT-OFF <input type="checkbox"/>	PULL OR ALTER CASING <input type="checkbox"/>	WATER SHUT-OFF <input checked="" type="checkbox"/>	REPAIRING WELL <input type="checkbox"/>
FRACTURE TREAT <input type="checkbox"/>	MULTIPLE COMPLETE <input type="checkbox"/>	FRACTURE TREATMENT <input type="checkbox"/>	ALTERING CASING <input type="checkbox"/>
SHOOT OR ACIDIZE <input type="checkbox"/>	ABANDON* <input type="checkbox"/>	SHOOTING OR ACIDIZING <input type="checkbox"/>	ABANDONMENT* <input type="checkbox"/>
REPAIR WELL <input type="checkbox"/>	CHANGE PLANS <input type="checkbox"/>	(Other) <input type="checkbox"/>	
(Other) <input type="checkbox"/>		(NOTE: Report results of multiple completion on Well Completion or Recompletion Report and Log form.)	

17. DESCRIBE PROPOSED OR COMPLETED OPERATIONS (Clearly state all pertinent details, and give pertinent dates, including estimated date of starting any proposed work. If well is directionally drilled, give subsurface locations and measured and true vertical depths for all markers and zones pertinent to this work.)*

A CIBP was set at 7,642' and the perforations from 7,656' to 7,665' were squeeze with 200 sacks class G cement. After cleaning the residual cement from the wellbore, the well was returned to production.



18. I hereby certify that the foregoing is true and correct

SIGNED [Signature] TITLE Production Engineer DATE 30-Jan-91

(This space for Federal or State office use)

APPROVED BY _____ TITLE _____ DATE _____
CONDITIONS OF APPROVAL, IF ANY:

STATE OF UTAH
DEPARTMENT OF NATURAL RESOURCES
DIVISION OF OIL, GAS, AND MINING

SUBMIT IN TRIPPLICATE*
(See instructions on reverse side)

SUNDRY NOTICES AND REPORTS ON WELLS

(Do not use this form for proposals to drill or to deepen or plug back to a different reservoir. Use "APPLICATION FOR PERMIT—" for such proposals.)

1. OIL WELL <input checked="" type="checkbox"/> GAS WELL <input type="checkbox"/> OTHER <input type="checkbox"/>		5. LEASE DESIGNATION AND SERIAL NO. 14-20-H62-430
2. NAME OF OPERATOR Lirmar Petroleum Company		6. IF INDIAN, ALLOTTEE OR TRIBE NAME Ute
3. ADDRESS OF OPERATOR P.O. Box 1327, Roosevelt, Utah 84066		7. UNIT AGREEMENT NAME
4. LOCATION OF WELL (Report location clearly and in accordance with any State requirements.* See also space 17 below.) At surface 1531' FWL, 1536' FSL (NWSW)		8. FARM OR LEASE NAME Bley
14. PERMIT NO. 43-013-31083	15. ELEVATIONS (Show whether DF, ST, GR, etc.) 6,620' GR	9. WELL NO. 2-2507
		10. FIELD AND POOL, OR WILDCAT Cedar Rim
		11. SEC., T., R., M., OR BLK. AND SURVEY OR AREA Sec. 24, T3S, R7W
		12. COUNTY OR PARISH Duchesne
		13. STATE Utah

16. Check Appropriate Box To Indicate Nature of Notice, Report, or Other Data

NOTICE OF INTENTION TO:		SUBSEQUENT REPORT OF:	
TEST WATER SHUT-OFF <input type="checkbox"/>	PULL OR ALTER CASING <input type="checkbox"/>	WATER SHUT-OFF <input type="checkbox"/>	REPAIRING WELL <input type="checkbox"/>
FRACTURE TREAT <input type="checkbox"/>	MULTIPLE COMPLETE <input type="checkbox"/>	FRACTURE TREATMENT <input type="checkbox"/>	ALTERING CASING <input type="checkbox"/>
SHOOT OR ACIDIZE <input type="checkbox"/>	ABANDON* <input type="checkbox"/>	SHOOTING OR ACIDIZING <input checked="" type="checkbox"/>	ABANDONMENT* <input type="checkbox"/>
REPAIR WELL <input type="checkbox"/>	CHANGE PLANS <input type="checkbox"/>	(Other) <input type="checkbox"/>	
(Other) <input type="checkbox"/>		(NOTE: Report results of multiple completion on Well Completion or Recompletion Report and Log form.)	

17. DESCRIBE PROPOSED OR COMPLETED OPERATIONS (Clearly state all pertinent details, and give pertinent dates, including estimated date of starting any proposed work. If well is directionally drilled, give subsurface locations and measured and true vertical depths for all markers and zones pertinent to this work.)*

A service unit was rigged up on the subject well and the cement retainer at 7,642' was milled up reopening the lower Wasatch perforations. The well is producing from 6,932' to 8,299'.

RECEIVED
FEB 07 1991

DIVISION OF
OIL, GAS & MINING

18. I hereby certify that the foregoing is true and correct
 SIGNED [Signature] TITLE Production Engineer DATE 06-Feb-91

(This space for Federal or State office use)

APPROVED BY _____ TITLE _____ DATE _____
 CONDITIONS OF APPROVAL, IF ANY: _____

STATE OF UTAH
DEPARTMENT OF NATURAL RESOURCES
DIVISION OF OIL, GAS, AND MINING

SUNDRY NOTICES AND REPORTS ON WELLS

(Do not use this form for proposals to drill or to deepen or plug back to a different reservoir. Use "APPLICATION FOR PERMIT—" for such proposals.)

<p>1. OIL WELL <input checked="" type="checkbox"/> GAS WELL <input type="checkbox"/> OTHER <input type="checkbox"/></p> <p>2. NAME OF OPERATOR Linmar Petroleum Company</p> <p>3. ADDRESS OF OPERATOR P.O. Box 1327, Roosevelt, Utah 84066</p> <p>4. LOCATION OF WELL (Report location clearly and in accordance with any State requirements.* See also space 17 below.) At surface 1531' FWL, 1536' FSL (NWSW)</p> <p>14. PERMIT NO. 43-013-31083 POW</p>	<p>5. LEASE DESIGNATION AND SERIAL NO. 14-20-H62-430</p> <p>6. IF INDIAN, ALLOTTEE OR TRIBE NAME Ute</p> <p>7. UNIT AGREEMENT NAME</p> <p>8. FARM OR LEASE NAME Bley</p> <p>9. WELL NO. 2-25C7</p> <p>10. FIELD AND POOL, OR WILDCAT Cedar Rim</p> <p>11. SEC., T., R., M., OR BLK. AND SURVEY OR AREA Sec. 24, T3S, R7W</p> <p>12. COUNTY OR PARISH Duchesne</p> <p>13. STATE Utah</p>
<p>15. ELEVATIONS (Show whether DF, ST, GR, etc.) 6,620' GR</p>	

16. Check Appropriate Box To Indicate Nature of Notice, Report, or Other Data

NOTICE OF INTENTION TO:		SUBSEQUENT REPORT OF:	
TEST WATER SHUT-OFF <input type="checkbox"/>	PULL OR ALTER CASING <input type="checkbox"/>	WATER SHUT-OFF <input type="checkbox"/>	REPAIRING WELL <input type="checkbox"/>
FRACTURE TREAT <input type="checkbox"/>	MULTIPLE COMPLETE <input type="checkbox"/>	FRACTURE TREATMENT <input type="checkbox"/>	ALTERING CASING <input type="checkbox"/>
SHOOT OR ACIDIZE <input type="checkbox"/>	ABANDON* <input type="checkbox"/>	SHOOTING OR ACIDIZING <input checked="" type="checkbox"/>	ABANDONMENT* <input type="checkbox"/>
REPAIR WELL <input type="checkbox"/>	CHANGE PLANS <input type="checkbox"/>	(Other) <input type="checkbox"/>	
(Other) <input type="checkbox"/>		(NOTE: Report results of multiple completion on Well Completion or Recompletion Report and Log form.)	

17. DESCRIBE PROPOSED OR COMPLETED OPERATIONS (Clearly state all pertinent details, and give pertinent dates, including estimated date of starting any proposed work. If well is directionally drilled, give subsurface locations and measured and true vertical depths for all markers and zones pertinent to this work.)*

Acidized Wasatch perforations from 6,932' to 7,626' with 5000 gallons 15% HCL on 11/24/90. The acid contained 8 gpm A200 and 400 RNCB's were dropped for diversion.

RECEIVED

FEB 07 1991

DIVISION OF
OIL, GAS & MINING

18. I hereby certify that the foregoing is true and correct
 SIGNED [Signature] TITLE Production Engineer DATE 06-Feb-91

(This space for Federal or State office use)

APPROVED BY _____ TITLE _____ DATE _____
 CONDITIONS OF APPROVAL, IF ANY: _____

UNITED STATES
DEPARTMENT OF THE INTERIOR
BUREAU OF LAND MANAGEMENT

JAN 13 1993

FORM APPROVED
Budget Bureau No. 1004-0135
Expires: March 31, 1993

SUNDRY NOTICES AND REPORTS ON WELLS

Do not use this form for proposals to drill or to deepen or reentry to a different reservoir.
Use "APPLICATION FOR PERMIT—" for such proposals

5. Lease Designation and Serial No.
14-20-H62-4307

6. If Indian, Allottee or Tribe Name
UTE

7. If Unit or CA, Agreement Designation

SUBMIT IN TRIPLICATE

8. Well Name and No.
BLEY 2-25C7

9. API Well No.
43-013-31083

10. Field and Pool, or Exploratory Area
CEDAR RIM

11. County or Parish, State
DUCHE SNE, UT

1. Type of Well
 Oil Well Gas Well Other

2. Name of Operator
LINMAR PETROLEUM COMPANY

3. Address and Telephone No.
P. O. BOX 1327, ROOSEVELT, UT 84066

4. Location of Well (Footage, Sec., T., R., M., or Survey Description)
SECTION 25, T35, R7W
1531' FWL, 1536' FSL (NWNW)
6620' GL

12. CHECK APPROPRIATE BOX(S) TO INDICATE NATURE OF NOTICE, REPORT, OR OTHER DATA

TYPE OF SUBMISSION

- Notice of Intent
- Subsequent Report
- Final Abandonment Notice

TYPE OF ACTION

- Abandonment
- Recompletion
- Plugging Back
- Casing Repair
- Altering Casing
- Other _____

- Change of Plans
- New Construction
- Non-Routine Fracturing
- Water Shut-Off
- Conversion to Injection
- Dispose Water

(Note: Report results of multiple completion on Well Completion or Recompletion Report and Log form.)

13. Describe Proposed or Completed Operations (Clearly state all pertinent details, and give pertinent dates, including estimated date of starting any proposed work. If well is directionally drilled, give subsurface locations and measured and true vertical depths for all markers and zones pertinent to this work.)*

RECEIVED

MAR 16 1993

LINMAR PETROLEUM HAS PLUGGED AND ABANDONED THE BLEY 2-25C7 AS PER THE ATTACHED WELL BORE DIAGRAMS AND DAILY WELL REPORTS.

A FINAL ABANDONMENT NOTICE WILL BE FILED WHEN SURFACE RESTORATION IS COMPLETED.

14. I hereby certify that the foregoing is true and correct.

Signed

Carroll Estes

Title

Production Foreman Date 3/13/93

(This space for Federal or State office use)

Approved by

Edna J. [Signature]

Title

acting

ASSISTANT DISTRICT
MANAGER MINERALS

Date

MAR 26 1993

Title 18 U.S.C. Section 1001, makes it a crime for any person knowingly and willfully to make to any department or agency of the United States any false, fictitious or fraudulent statement or representations as to any matter within its jurisdiction.

UNITED STATES
DEPARTMENT OF THE INTERIOR
BUREAU OF LAND MANAGEMENT

FORM APPROVED
Budget Bureau No. 1004-0135
Expires: March 31, 1993

SUNDRY NOTICES AND REPORTS ON WELLS

Do not use this form for proposals to drill or to deepen or reentry to a different reservoir.
Use "APPLICATION FOR PERMIT—" for such proposals

5. Lease Designation and Serial No.
14-20-H62-4307

6. If Indian, Allottee or Tribe Name
UTE

SUBMIT IN TRIPLICATE

7. If Unit or CA, Agreement Designation

1. Type of Well
 Oil Well Gas Well Other

8. Well Name and No.
BLEY 2-25C7

2. Name of Operator
LINMAR PETROLEUM COMPANY

9. API Well No.
43-013-31083

3. Address and Telephone No.
P.O. BOX 1327, ROOSEVELT, UT 84066

10. Field and Pool, or Exploratory Area
CEDAR RIM

4. Location of Well (Footage, Sec., T., R., M., or Survey Description)
SECTION 25, T35, R7W
1531' FWL, 1536' FSL (NWNW)
6620' GL

11. County or Parish, State
DUCHE SNE, UT

12. CHECK APPROPRIATE BOX(S) TO INDICATE NATURE OF NOTICE, REPORT, OR OTHER DATA

TYPE OF SUBMISSION

TYPE OF ACTION

- Notice of Intent
- Subsequent Report
- Final Abandonment Notice

- Abandonment
- Recompletion
- Plugging Back
- Casing Repair
- Altering Casing
- Other

- Change of Plans
- New Construction
- Non-Routine Fracturing
- Water Shut-Off
- Conversion to Injection
- Dispose Water

(Note: Report results of multiple completion on Well Completion or Recompletion Report and Log form.)

13. Describe Proposed or Completed Operations (Clearly state all pertinent details, and give pertinent dates, including estimated date of starting any proposed work. If well is directionally drilled, give subsurface locations and measured and true vertical depths for all markers and zones pertinent to this work.)*

QER
VERNAL DIST.
ENG. 3-19-93
GEOL. 8-0 3/24/93
E.S.
PET. 3/22/93

RECEIVED

MAR 16 1993

LINMAR PETROLEUM HAS PLUGGED AND ABANDONED THE BLEY 2-25C7 AS PER THE ATTACHED WELL BORE DIAGRAMS AND DAILY WELL REPORTS.

A FINAL ABANDONMENT NOTICE WILL BE FILED WHEN SURFACE RESTORATION IS COMPLETED.

14. I hereby certify that the foregoing is true and correct.

Signed Carroll Estes Title Production Foreman Date 3/13/93

(This space for Federal or State office use)

Approved by Edna J. Swan Title acting ASSISTANT DISTRICT MANAGER MINERALS

Date MAR 26 1993

Conditions of approval, if any:

** L225C7 930218 001 CEE 2900

BLEY 2-25C7

PLUG AND ABANDON

AFE# L225C7-921 \$40,100

Notify Ray Arnold of the BLM of the rig moving on to plug the well. MIRU Welltech #562. ND WH. NU BOPE. POOH w/98 jts tbg. Started to pull wet. RU swab equip. Swab tbg dry. Pump and SV followed swab out of tbg. Pump 50 BFW down tbg. POOH w/58 jts tbg. Tbg blew in. Drain pump and lines. SWIFN.

WELLTECH #562 1700

BOPE 200

JONES TRKG 600

CEE 400

DC=\$2,900 CC=\$2,900

** L225C7 930219 002 CEE 2700

BLEY 2-25C7

PLUG AND ABANDON

AFE# L225C7-921 \$40,100

POOH w/52 jts tbg, 1-6' tbg sub, National F cavity and Baker 5 1/2", R-3 packer. TIH w/4 1/2" paraffin knife on 208 jts tbg to 6,843' circ out paraffin to rig flat tank. POOH w/paraffin knife. TIH w/5 1/2" csg scraper, x-o on 208 jts tbg to 6,843' circ out paraffin out to rig flat tank. POOH w/80 jts tbg. Drain pump and lines. SWIFN.

WELLTECH #562 1700

BOPE 200

SCRAPER 400

CEE 400

DC=\$2,700 CC=\$5,600

** L225C7 930220 003 CEE 5600

BLEY 2-25C7

PLUG AND ABANDON

AFE# L225C7-921 \$40,100

POOH w/128 jts tbg, x-o and scraper. PU Baker 5 1/2", 20#, CIBP adn TIH on 208 jts tbg. Set CIBP @6,847'. Test csg and CIBP to 2,000 psi for 15 min. Pump 150 BFW down surface 5 1/2" X 9 5/8" csg annulus. Drain pump and lines. SWIFWeekend.

WELLTECH #562 1000

BOPE 200

BRIDGE PLUG 1000

CEE 400

DC=\$2,600 CC=\$8,200

** L225C7 930221 000 CEE 000

BLEY 2-25C7

PLUG AND ABANDON

AFE# L225C7-921 \$40,100

SWIFWeekend.

** L225C7 930222 004 CEE 600

BLEY 2-25C7

PLUG AND ABANDON

AFE #L225C7-921 \$40,100

MIRU Sunrise hotoiler. HO csg fo 6 hours @1.5 bpm and 250 degrees.

SWIFN.

SUNRISE HO 600

DC=\$600 CC=\$8,800

** L225C7 930223 000 CEE 000

BLEY 2-25C7

PLUG AND ABANDON

AFE# L225C7-921 \$40,100

SWIFWeekend.

** L225C7 930224 005 CEE 10700

BLEY 2-25C7

PLUG AND ABANDON

AFE #L225C7-921 \$40,100

MIRU Dowell Schlumberger. Test csg to 2,000 psi for 15 min. Spot a 25 sack balanced Class G cement plug from 6,848' to 6,617'. POOH LD 8 jts tbg. EOT @6,584'. Displace csg w/100 bbls, 9.3 ppg, 40 vis mud w/DQ-60 biocide from 6,854' to 2,122'. POOH LD 135 jts tbg. EOT @2,122'. Pump 350 sacks 50-50 POZ and 50 sacks 10-2 RFC cement down 5 1/2" X 9 5/8" csg annulus w/no pressure. Spot a 25 sack balanced class G cement plug from 2,122' to 1,891'. POOH LD 8 jts tbg. EOT @1,858'. Displace csg w/45 bbls 9.3 ppg, 60 vis mud w/DQ-60 biocide from 1,858' to surface. POOH LD 57 jts tbg. Dig out cellar for cutoff. SWIFN.

WELLTECH #562 1600

DOWELL 6000

WEST HAZMAT 600

UNIBAR MUD 700

DALBO TRKG 1000

SHINER WELDING 400

CEE 400

DC=\$10,700 CC=\$19,500

** L225C7 930225 006 CEE 5300

BLEY 2-25C7

PLUG AND ABANDON

AFE #L225C7-921 \$40,100

Cutoff WH. RIH w/5 jts tbg. RU Dowell Schlumberger. Fill 5 1/2" csg from 323' to surface w/35 sacks class G cement and spill 182 sacks class G cement into 5 1/2" X 9 5/8" csg annulus filling from 777' to surface. Both strings standing full. POOH LD 5 jts tbg. Install dry hole marker. Fill dry hole marker to top w/cement. RDOSU. All cement and plugs witnessed by Mr. Randy Bywater of the BLM.

WELLTECH #562 1300

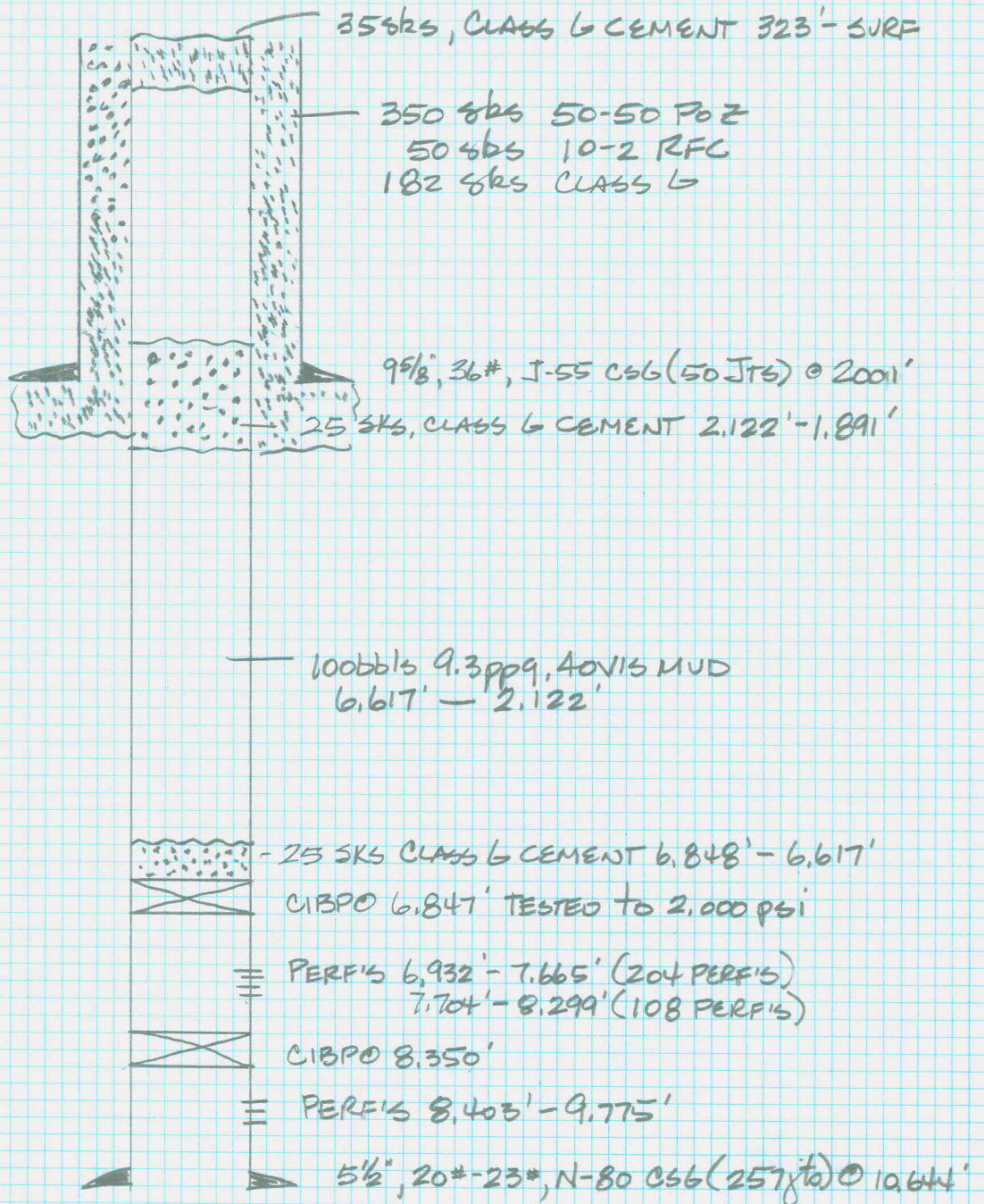
BOPE 200

DOWELL SCHLUM 3000

SHINER WELDING 400

CEE 400

DC=\$5,300 CC=\$24,800



Linmar Petroleum Company

8lev 2-2507
Current Wellbore Diagram

September 24, 1992

9 5/8" 36# J55
(50 joints)

2001'

5 1/2"
209 jts 20# N80
48 jts 23# N80

2 7/8" Tubing
208 jts

Baker R-3 packer

XXXXXX

XXXXXX

6.859'

Perforations:

6.932' - 7.665' (204 perms)

7.704' - 8.299' (108 perms)

Baker Model C Bridge
Plug

XXXXXXXXXXXXXXXXXX

8.350'

10.644'